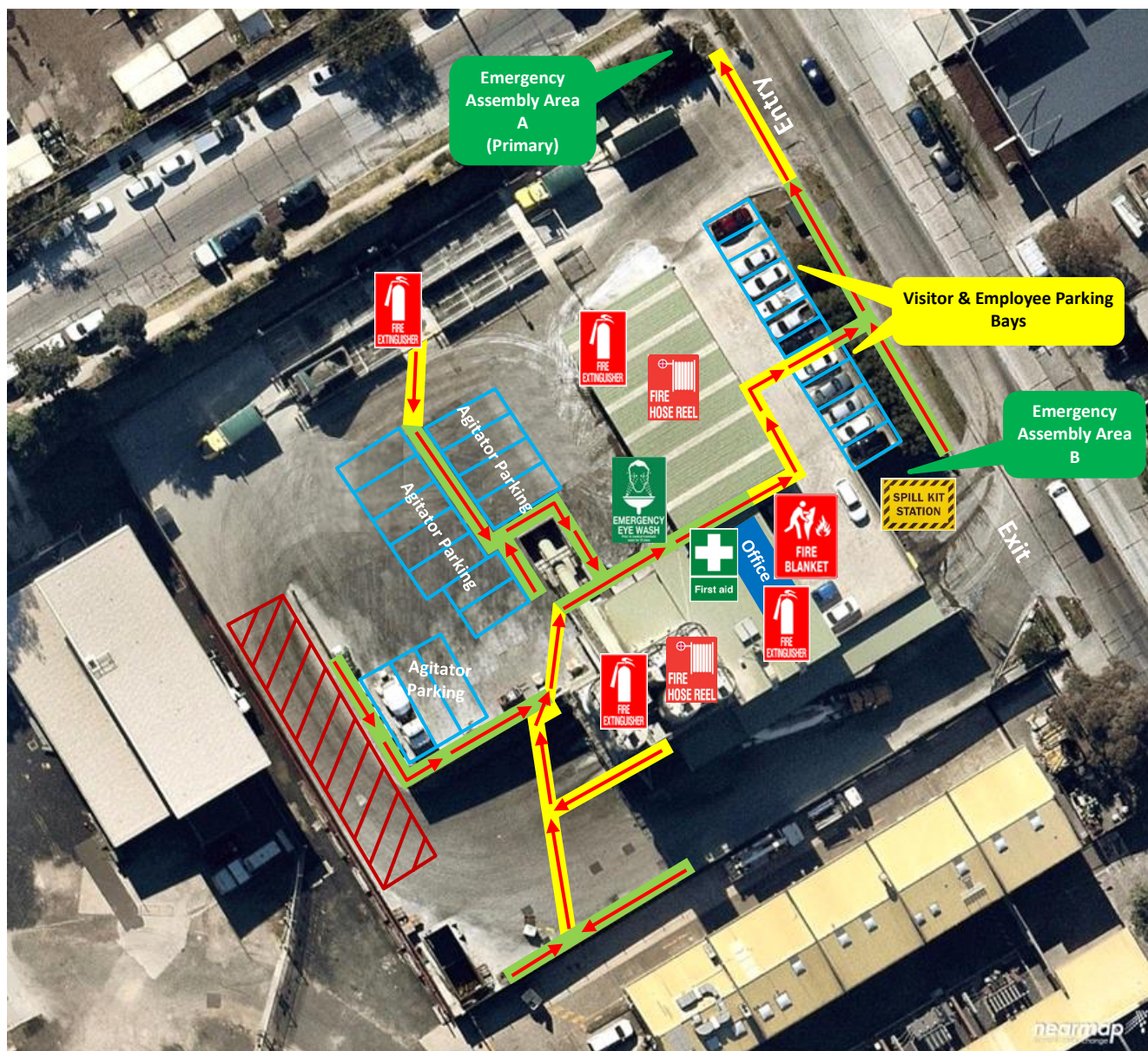





# **Artarmon Concrete Plant**

# Traffic & Pedestrian Management Plan








## Emergency Site Map



### Pedestrians

-  **Protected Walkway**
-  **Designated Walkway**  
Pedestrians **MUST** give way to vehicles and plant
-  **Pedestrian Exclusion Zone**  
Only authorised pedestrians are permitted to conduct work in operational areas

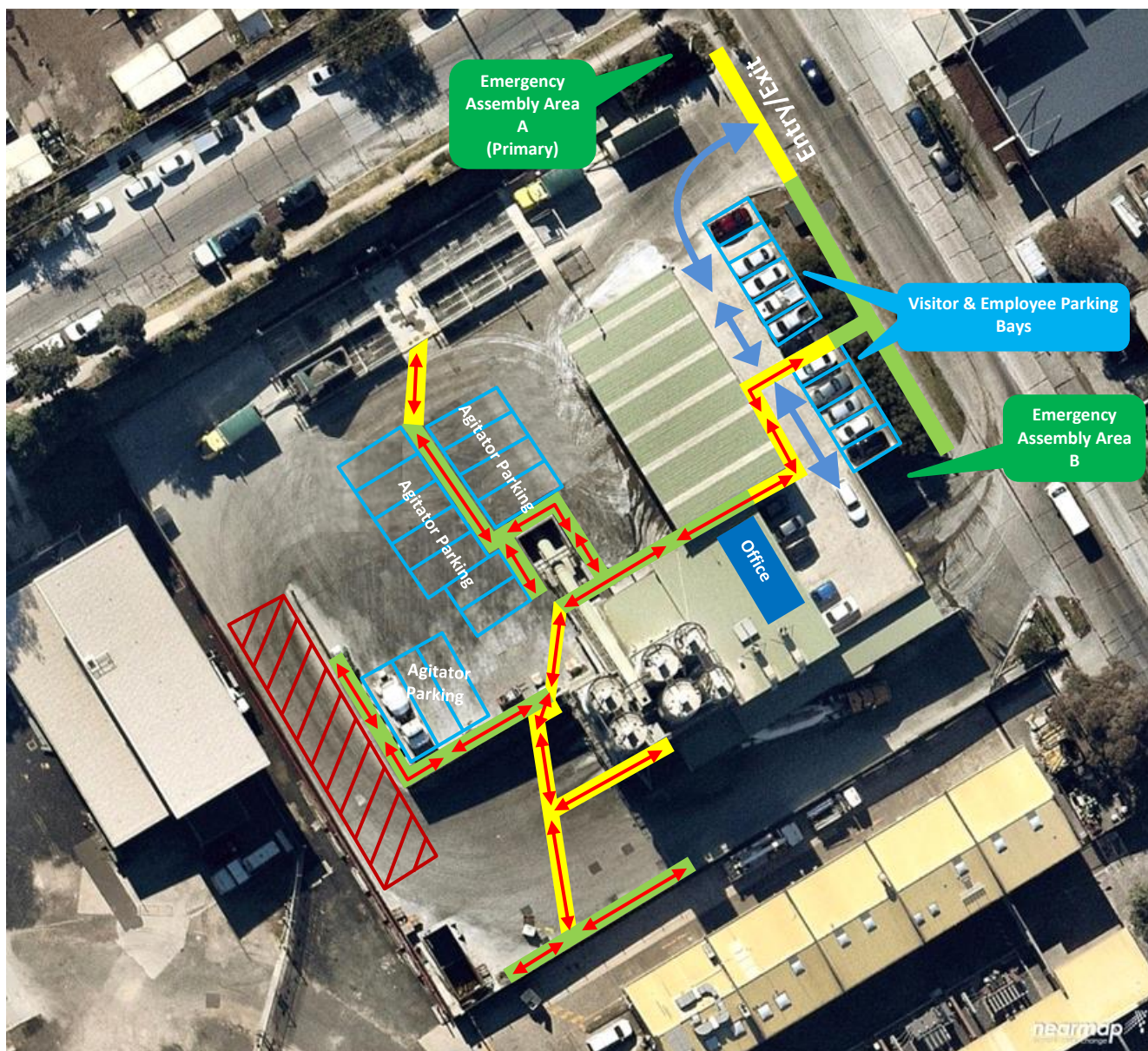
### Emergency Stations

	<b>Emergency Assembly Areas</b> Point A is the primary Assembly area and is located near the entry gate	 <b>First Aid</b> Located in office	 <b>Emergency Eye Wash Station</b> Located in Washout Bays
	<b>Spill Kit</b> Located in Emergency Assembly area B	 <b>Fire Blanket</b> Located in office	 <b>Fire Hose Reels</b> Located in Wash Stands & Batching area
			
<b>Fire Extinguishers</b> Are located in each of the following areas: Office - level 1, Raw Material Bins - Ground level, Wash Bays - level 1 Batching area - Ground level, level 1, level 2			




# Traffic & Pedestrian Management Plan




## Visitor Site Map



### Pedestrians

-  **Protected Walkway**
-  **Designated Walkway**  
Pedestrians **MUST** give way to vehicles and plant
-  **Pedestrian Exclusion Zone**  
Only authorised pedestrians are permitted to conduct work in operational areas

### Vehicles and Plant

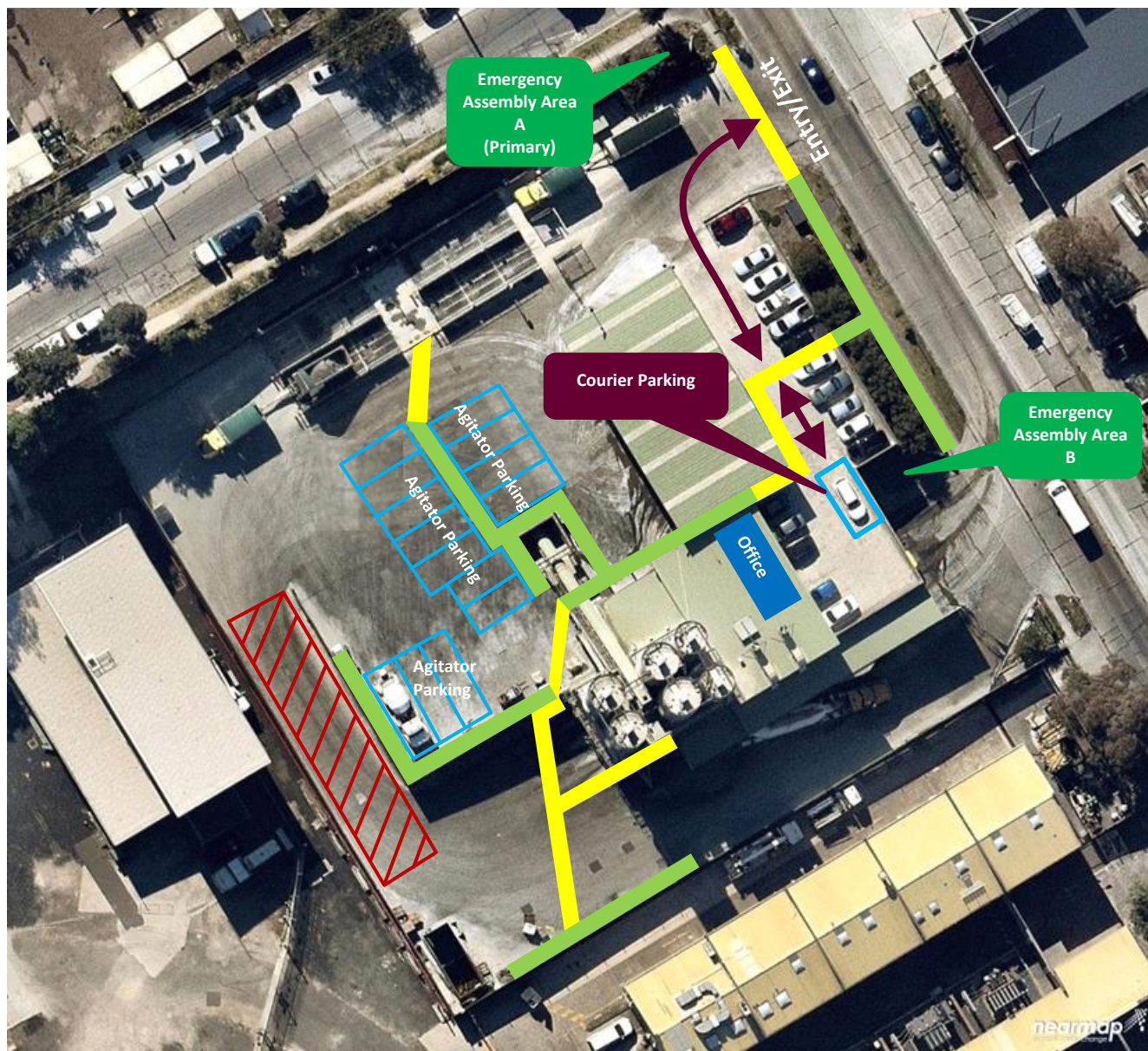
-  **Vehicle Route**  
Follow the direction of the vehicle route. Drivers **MUST** not exit their vehicle unless they can access a designated walkway or to complete designated work.
-  **Visitor & Employee Parking**  
Parking is strictly limited to front of site
-  **Front End Loader (FEL) and Forklift**
  - Operate in all areas.
  - Have right of way in vehicle operating areas. Always establish positive communication (verbal and/or visual contact) with operator before approaching within 20 metres






# Traffic & Pedestrian Management Plan

## Courier Delivery Site Map




(Light Vehicle)



### Pedestrians

-  **Protected Walkway**
-  **Designated Walkway**  
Pedestrians **MUST** give way to vehicles and plant
-  **Pedestrian Exclusion Zone**  
Only authorised pedestrians are permitted to conduct work in operational areas

### Vehicles and Plant

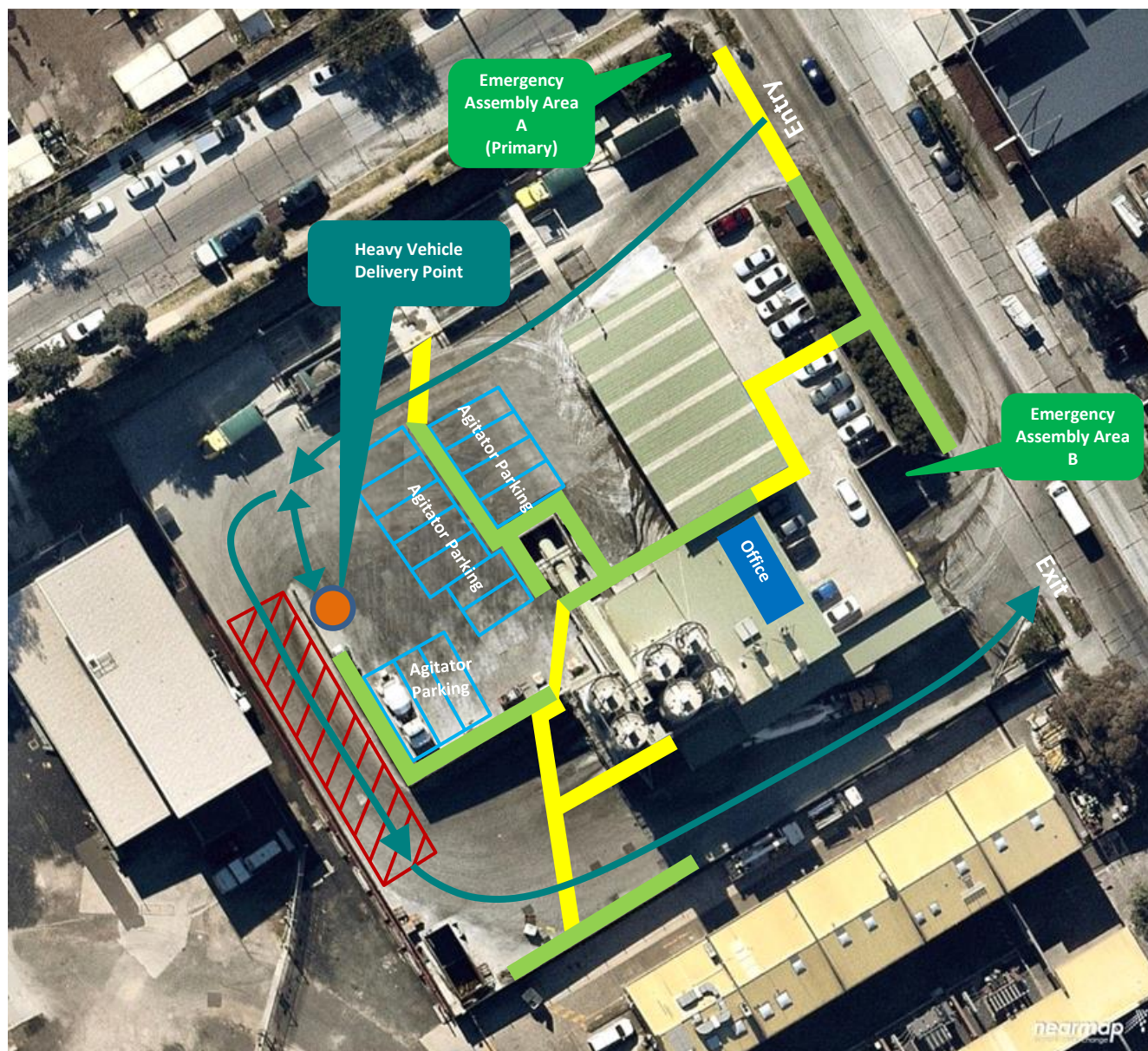
-  **Vehicle Route**  
Follow the direction of the vehicle route. Drivers **MUST** not exit their vehicle unless they can access a designated walkway or to complete designated work.
-  **Courier Parking**  
Located opposite to the Office entry
-  **Front End Loader (FEL) and Forklift**
  - Operate in all areas.
  - Have right of way in vehicle operating areas. Always establish positive communication (verbal and/or visual contact) with operator before approaching within 20 metres





# Traffic & Pedestrian Management Plan

## Heavy Vehicle Delivery Site Map




(Requiring Forklift)



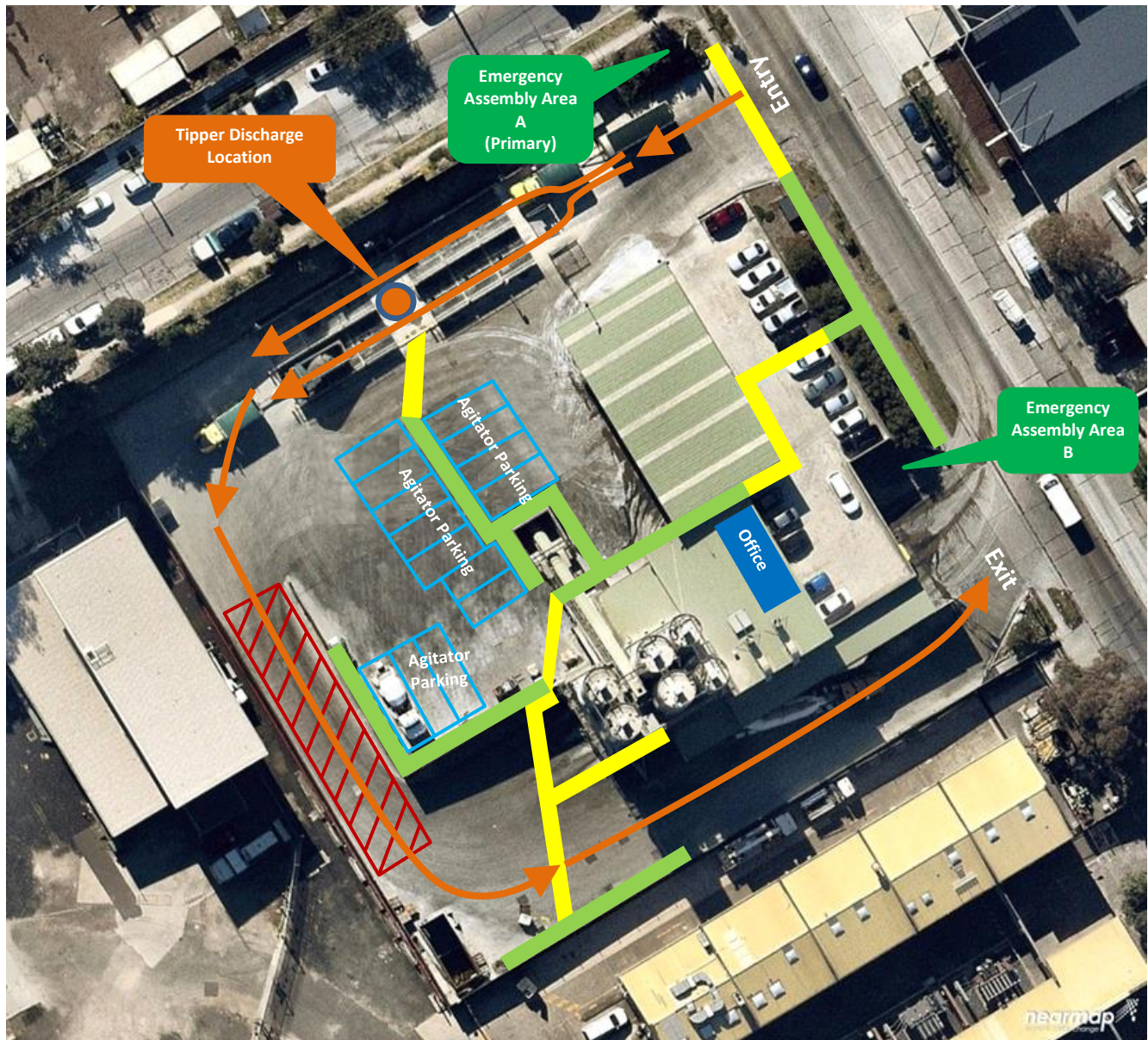
### Pedestrians

-  **Protected Walkway**
-  **Designated Walkway**  
Pedestrians **MUST** give way to vehicles and plant
-  **Pedestrian Exclusion Zone**  
Only authorised pedestrians are permitted to conduct work in operational areas




### Vehicles and Plant

-  **Vehicle Route**  
Follow the direction of the vehicle route. Drivers **MUST** not exit their vehicle unless they can access a designated walkway or to complete designated work.
-  **Heavy Vehicle Delivery Point**
-  **Front End Loader (FEL) and Forklift**
  - Operate in all areas.
  - Have right of way in vehicle operating areas. Always establish positive communication (verbal and/or visual contact) with operator before approaching within 20 metres








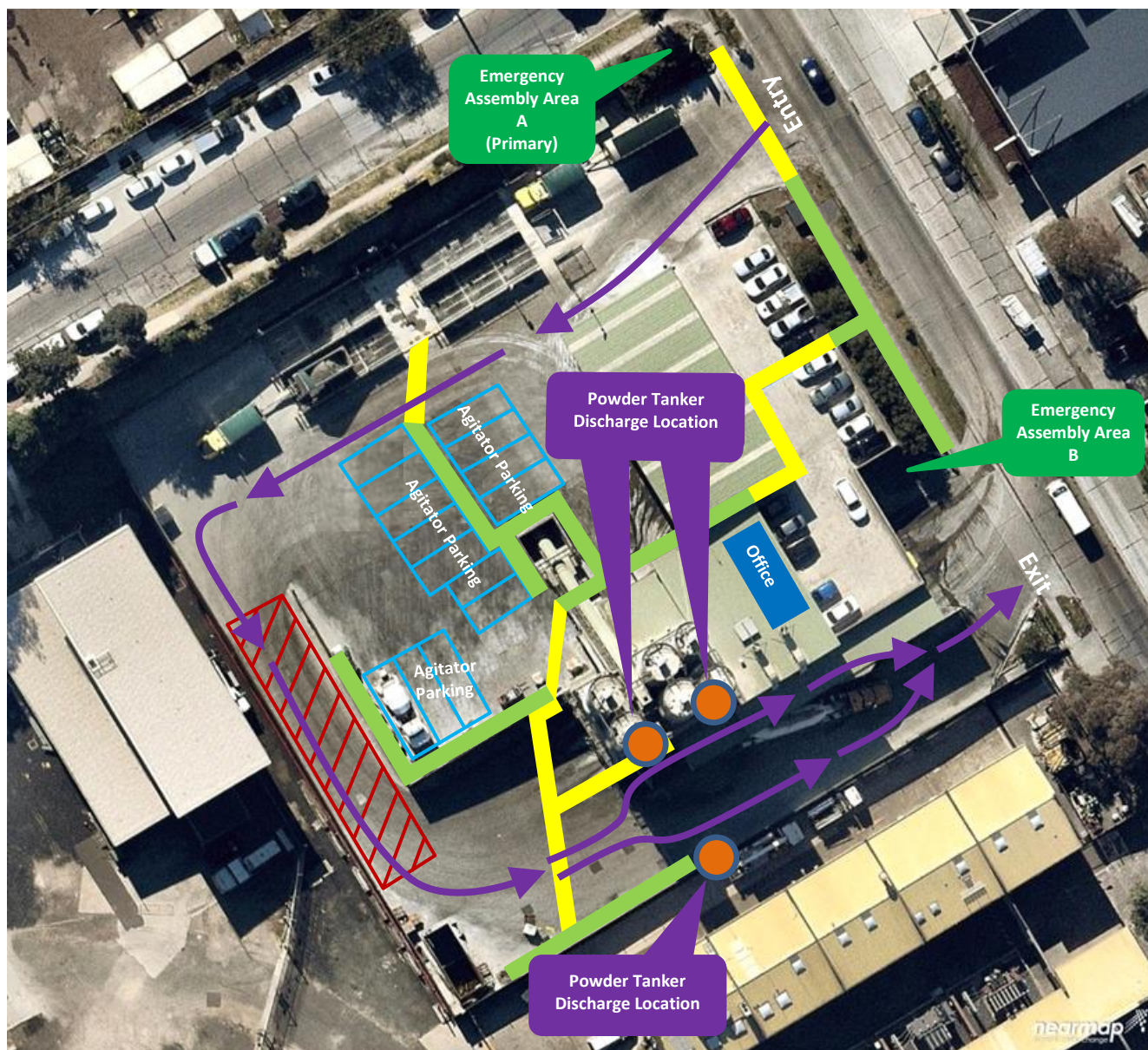
### Pedestrians

-  **Protected Walkway**
-  **Designated Walkway**  
Pedestrians **MUST** give way to vehicles and plant
-  **Pedestrian Exclusion Zone**  
Only authorised pedestrians are permitted to conduct work in operational areas




### Vehicles and Plant

-  **Vehicle Route**  
Follow the direction of the vehicle route. Drivers **MUST** not exit their vehicle unless they can access a designated walkway or to complete designated work.
-  **Tipper Discharge Location**
-  **Front End Loader (FEL) and Forklift**
  - Operate in all areas.
  - Have right of way in vehicle operating areas. Always establish positive communication (verbal and/or visual contact) with operator before approaching within 20 metres








### Pedestrians

-  **Protected Walkway**
-  **Designated Walkway**  
Pedestrians **MUST** give way to vehicles and plant
-  **Pedestrian Exclusion Zone**  
Only authorised pedestrians are permitted to conduct work in operational areas

### Vehicles and Plant

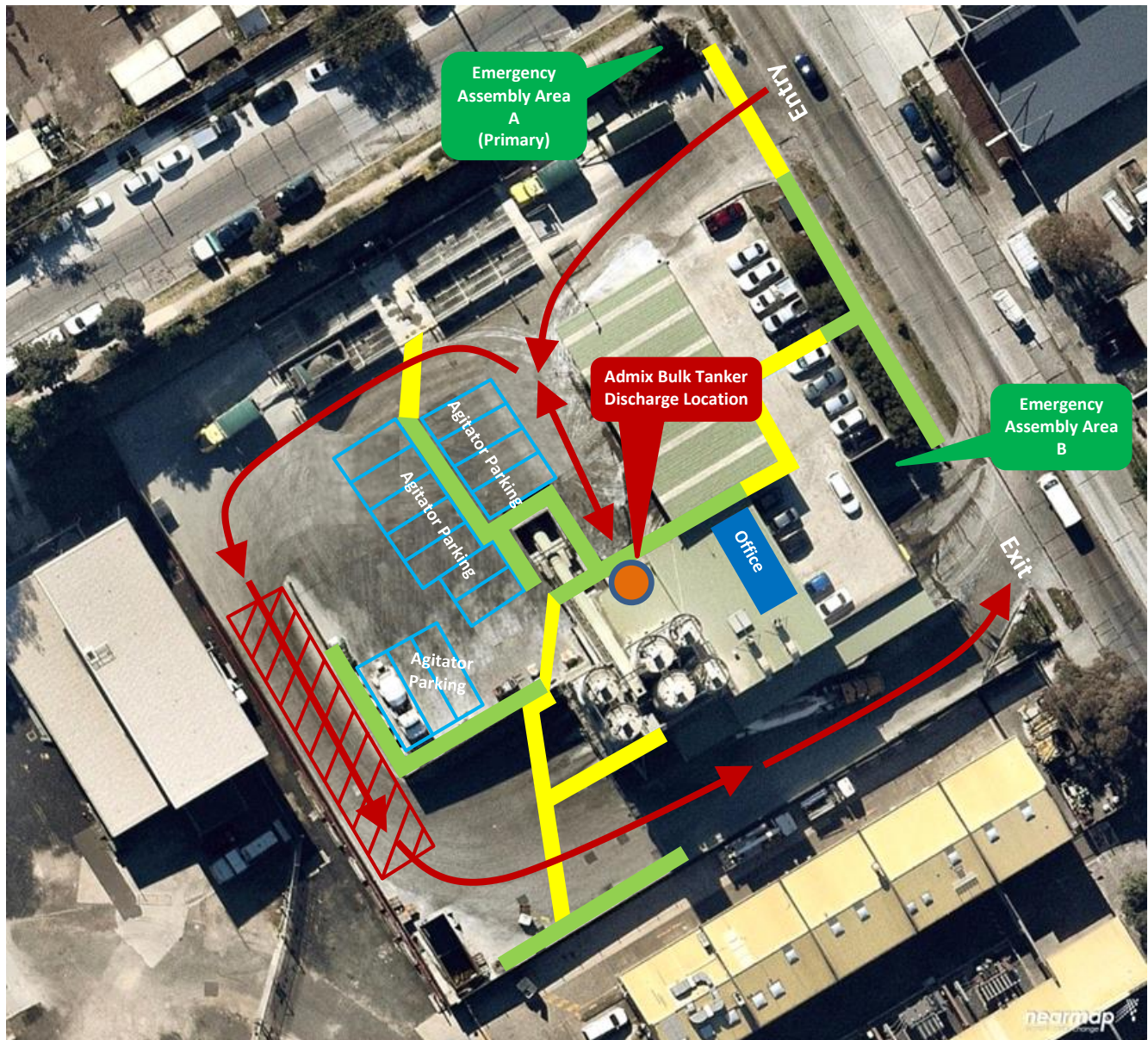
-  **Vehicle Route**  
Follow the direction of the vehicle route. Drivers **MUST** not exit their vehicle unless they can access a designated walkway or to complete designated work.
-  **Powder Tanker Discharge Locations**
-  **Front End Loader (FEL) and Forklift**
  - Operate in all areas.
  - Have right of way in vehicle operating areas. Always establish positive communication (verbal and/or visual contact) with operator before approaching within 20 metres






# Traffic & Pedestrian Management Plan

## Admix Bulk Tanker Site Map




(Driver must contact office on UHF channel 38 prior to entering site)



### Pedestrians

-  **Protected Walkway**
-  **Designated Walkway**  
Pedestrians **MUST** give way to vehicles and plant
-  **Pedestrian Exclusion Zone**  
Only authorised pedestrians are permitted to conduct work in operational areas

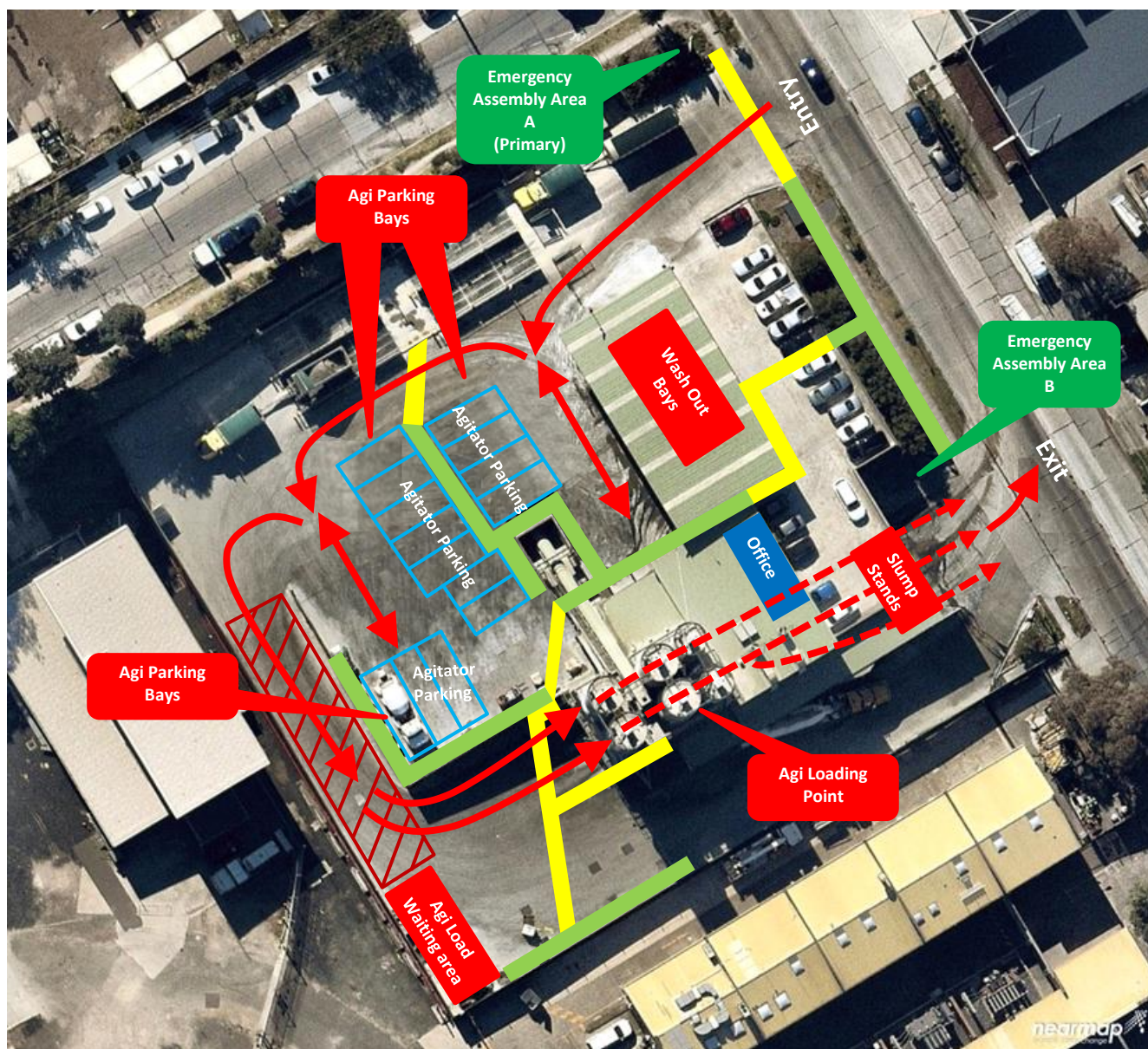
### Vehicles and Plant

-  **Vehicle Route**  
Follow the direction of the vehicle route. Drivers **MUST** not exit their vehicle unless they can access a designated walkway or to complete designated work.
-  **Admix Bulk Tanker Discharge Location**
-  **Front End Loader (FEL) and Forklift**
  - Operate in all areas.
  - Have right of way in vehicle operating areas. Always establish positive communication (verbal and/or visual contact) with operator before approaching within 20 metres






# Traffic & Pedestrian Management Plan




## Agitator Site Map



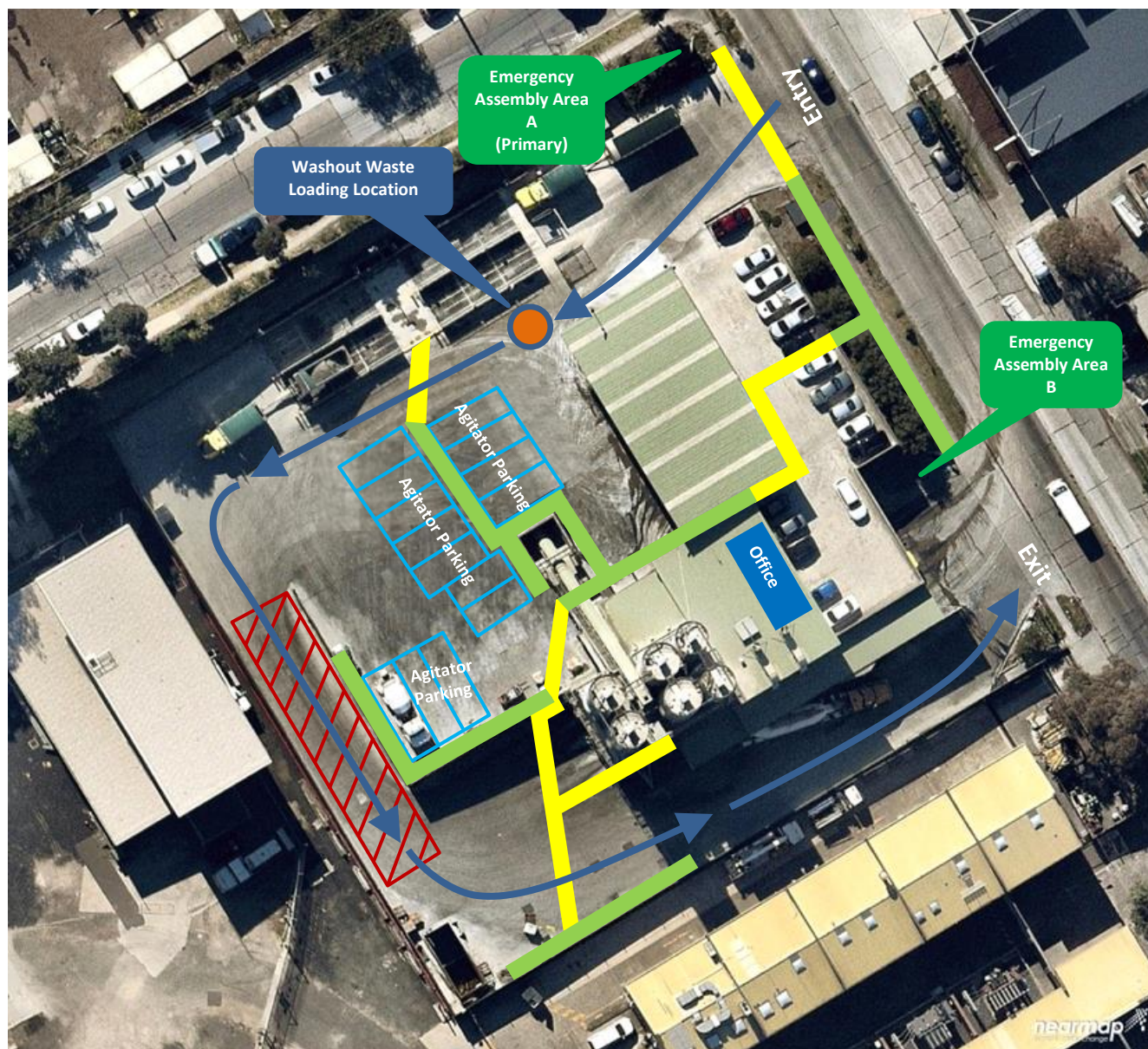
### Pedestrians

-  **Protected Walkway**
-  **Designated Walkway**  
Pedestrians **MUST** give way to vehicles and plant
-  **Pedestrian Exclusion Zone**  
Only authorised pedestrians are permitted to conduct work in operational areas




### Vehicles and Plant

-  **Vehicle Route**  
Follow the direction of the vehicle route. Drivers **MUST** not exit their vehicle unless they can access a designated walkway or to complete designated work.
-  **Agitator Parking Bays**
-  **Front End Loader (FEL) and Forklift**
  - Operate in all areas.
  - Have right of way in vehicle operating areas. Always establish positive communication (verbal and/or visual contact) with operator before approaching within 20 metres








## Pedestrians

-  **Protected Walkway**
-  **Designated Walkway**  
Pedestrians **MUST** give way to vehicles and plant
-  **Pedestrian Exclusion Zone**  
Only authorised pedestrians are permitted to conduct work in operational areas

## Vehicles and Plant

-  **Vehicle Route**  
Follow the direction of the vehicle route. Drivers **MUST** not exit their vehicle unless they can access a designated walkway or to complete designated work.
-  **Washout Waste Loading Location**
-  **Front End Loader (FEL) and Forklift**
  - Operate in all areas.
  - Have right of way in vehicle operating areas. Always establish positive communication (verbal and/or visual contact) with operator before approaching within 20 metres