



# **Singleton Concrete Plant**




# Traffic & Pedestrian Management Plan

## Pedestrian Upgrade Site Map

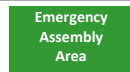
### Boral Concrete – 75 Darlington Rd, Singleton



#### Pedestrians

-  **Protected Walkway**
-  **Designated Walkway**  
Pedestrians **MUST** give way to vehicles and plant
-  **Pedestrian Exclusion Zone**  
Only authorised pedestrians are permitted to conduct work in operational areas

#### Vehicles and Plant



##### Emergency Assembly Area

Located at the entry gate. Proceed to the assembly point using the designated walkways.



##### Light Vehicle Parking

- Light vehicles park in the Visitor & Employee parking bays, located near the entry gate.
- Parking is reverse entry.
- All visitors must report to the Driver's Room immediately upon arrival. Follow the pathway directional arrows to and from the Driver's Room, as indicated on the map.



##### Site Speed Limit

The site speed limit is restricted to 10kph.



##### 2-Way Communication

All radio communication on this site is via UHF Channel 15 and Boral radio frequency SINGLETON.



##### Front End Loader (FEL)

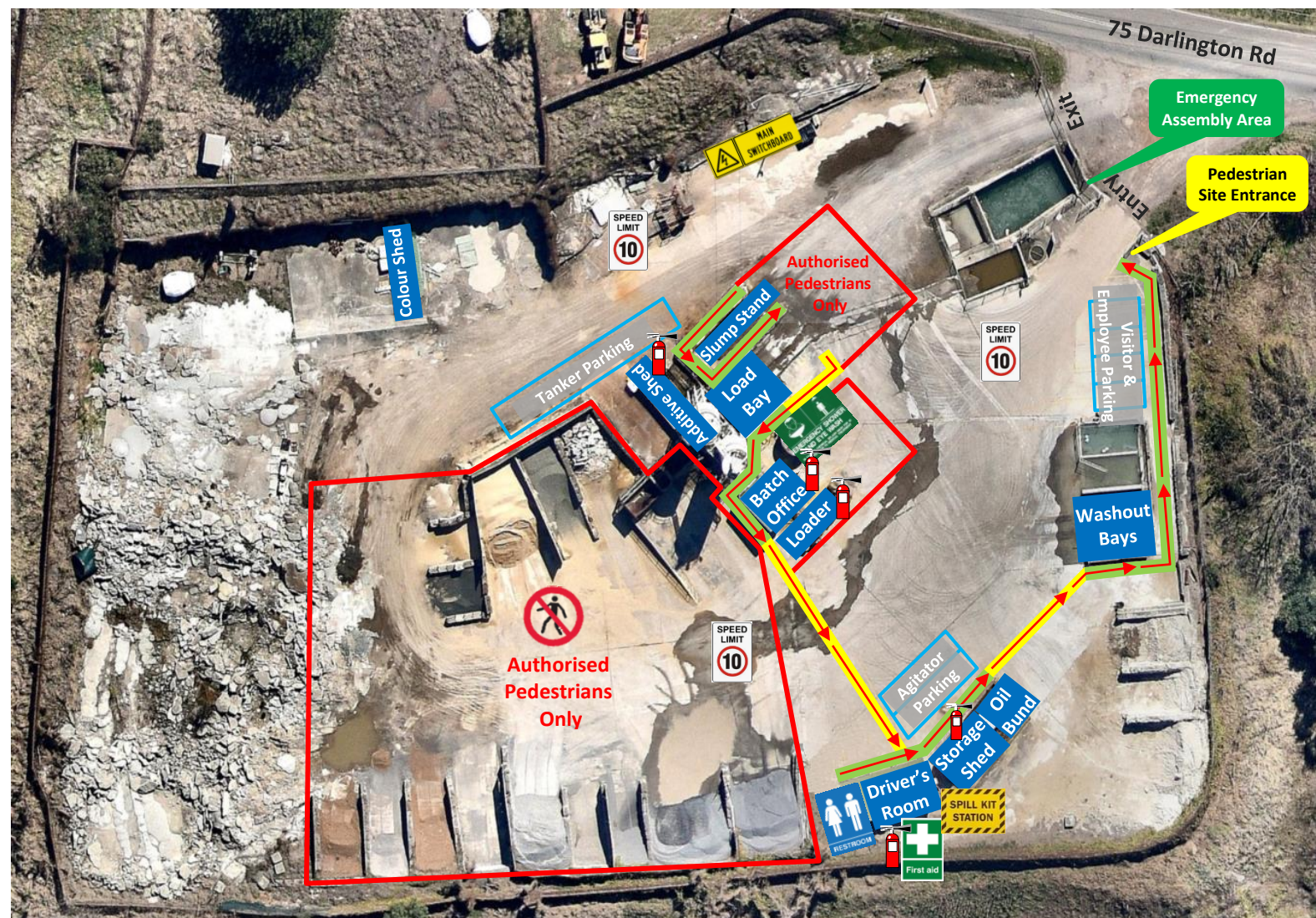
- Operates in all areas.
- Has right of way in vehicle operating areas. Always establish positive communication (verbal and/or visual contact) with operator before approaching within 20 metres. Communicate with the Loader operator via UHF Channel 15.






# Traffic & Pedestrian Management Plan

## Emergency Site Map

### Boral Concrete – 75 Darlington Rd, Singleton



#### Pedestrians

-  **Protected Walkway**
-  **Designated Walkway**  
Pedestrians **MUST** give way to vehicles and plant
-  **Pedestrian Exclusion Zone**  
Only authorised pedestrians are permitted to conduct work in operational areas

#### Emergency Equipment



**First Aid**  
Located in Driver's Room



**Spill Kit**  
Located between Driver's Room and Storage Shed



**Main Electrical**  
Located along the exit driveway



**Emergency Eye Wash & Shower**  
Located beside Loading Bay



**Emergency Assembly Area**  
Located at the Entry gate. Follow the pathway directional arrows as indicated on the map.



**Fire Extinguishers**  
Located in the following areas:  
Driver's Room, Batch office, external front wall of Batch office, external side wall of Additive shed, 2 located on the external front wall of Storage shed, Front End Loader, all trucks are equipped with fire extinguishers.