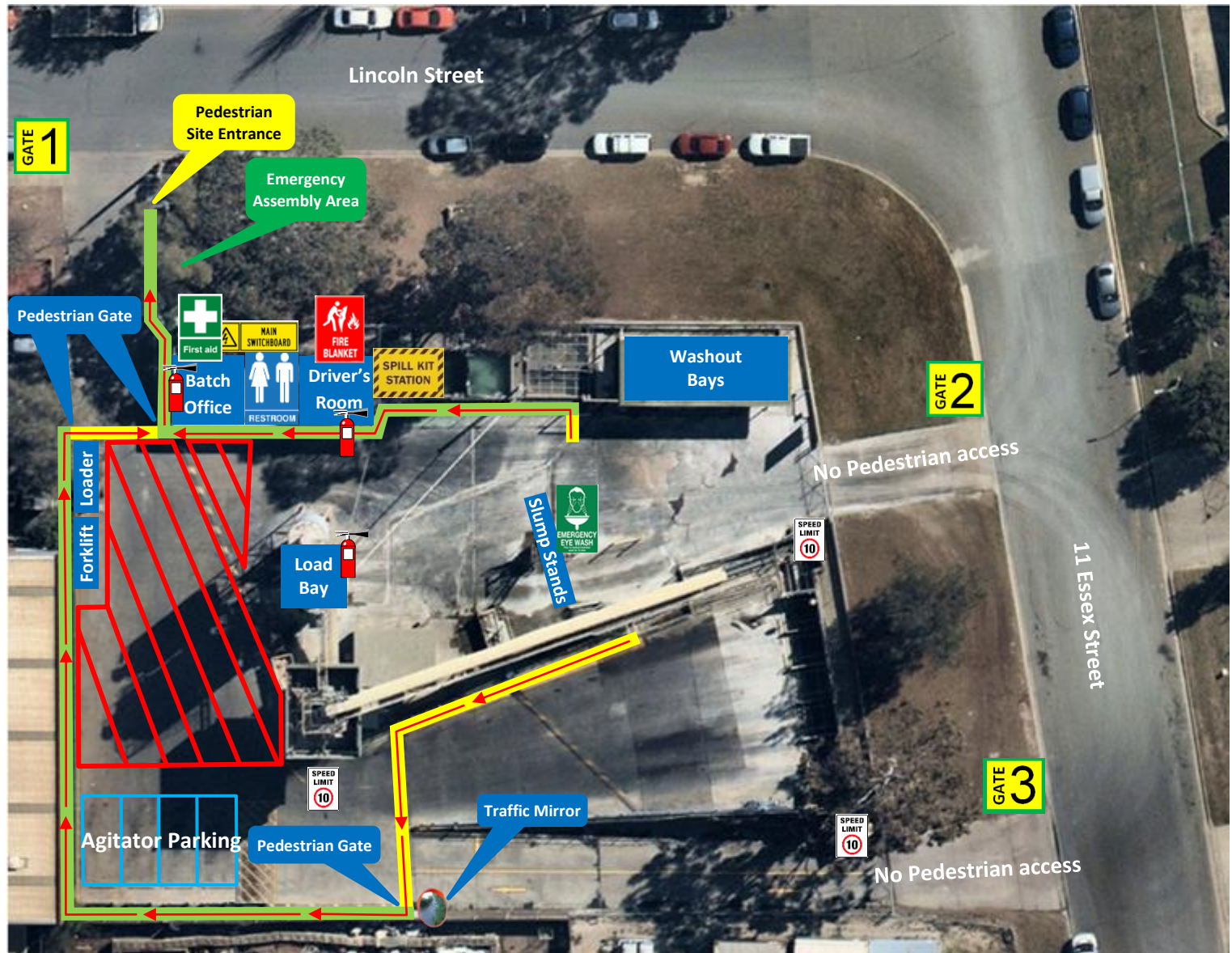







Minto Concrete Plant



Pedestrians

-  **Protected Walkway**
-  **Designated Walkway**
Pedestrians **MUST** give way to vehicles and plant
-  **Pedestrian Exclusion Zone**
Only authorised pedestrians are permitted to conduct work in operational areas

Emergency Stations



Fire Blanket
Located in Driver's Room



Main Electrical
Located directly behind Office



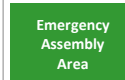
Emergency Eye Wash
Located at Slump Stand



Spill Kit
Located between Driver's Room & Detention Pits



First Aid
Located in Office



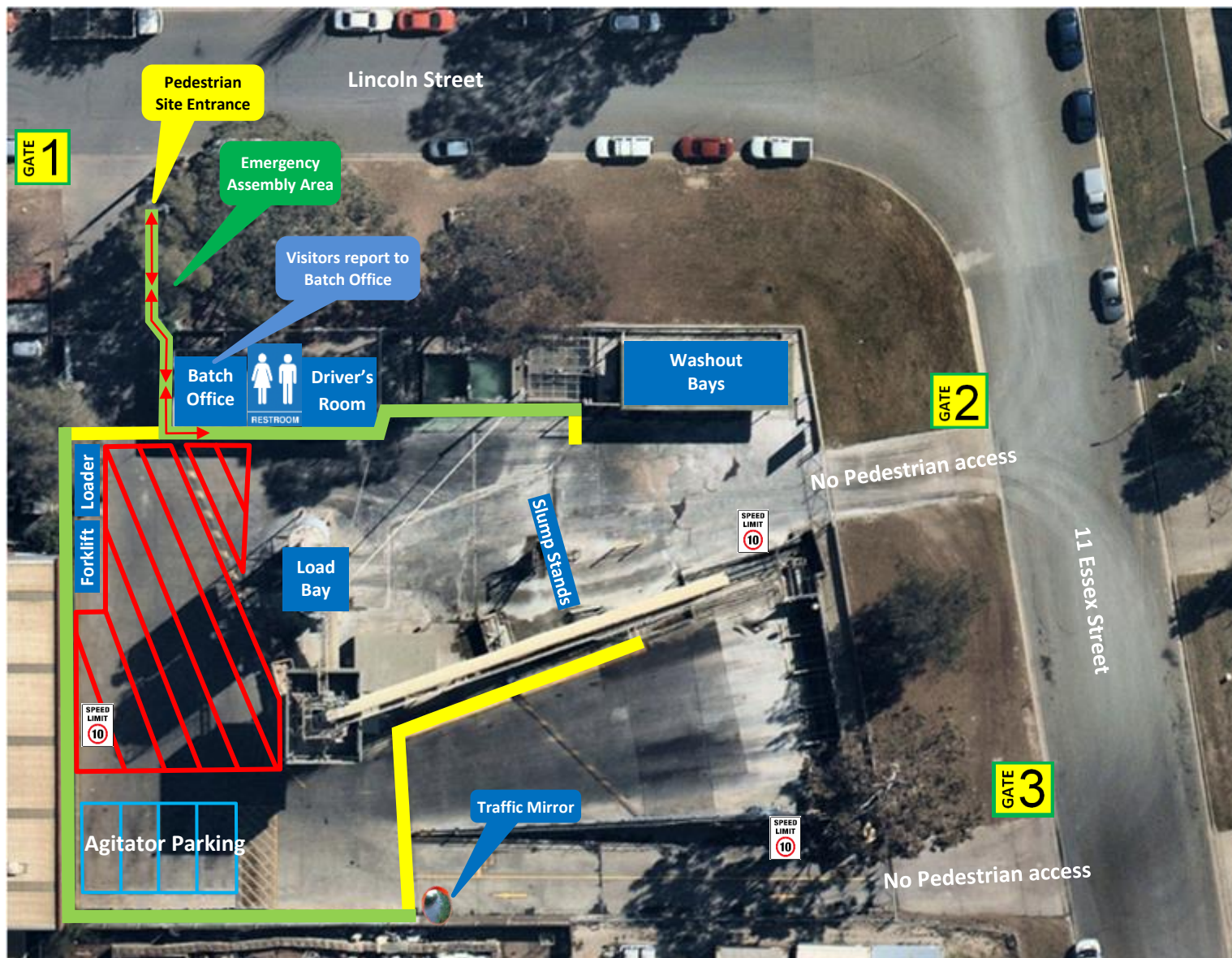
Emergency Assembly Areas
Located at the Lincoln Street site entrance, at Gate 1






Fire Extinguishers
Are located in each of the following areas:
Office, entrance to Driver's Room, Loading Bay on Ground floor.

Traffic & Pedestrian Management Plan

Visitor Site Map



Pedestrians

-  **Protected Walkway**
-  **Designated Walkway**
Pedestrians **MUST** give way to vehicles and plant
-  **Pedestrian Exclusion Zone**
Only authorised pedestrians are permitted to conduct work in operational areas

Vehicles and Plant



Visitor Parking

No Visitor parking on site (street parking only). All visitors must report to the Batch office immediately upon arrival on site. Follow the pathway directional arrows to and from office, as indicated on the map.



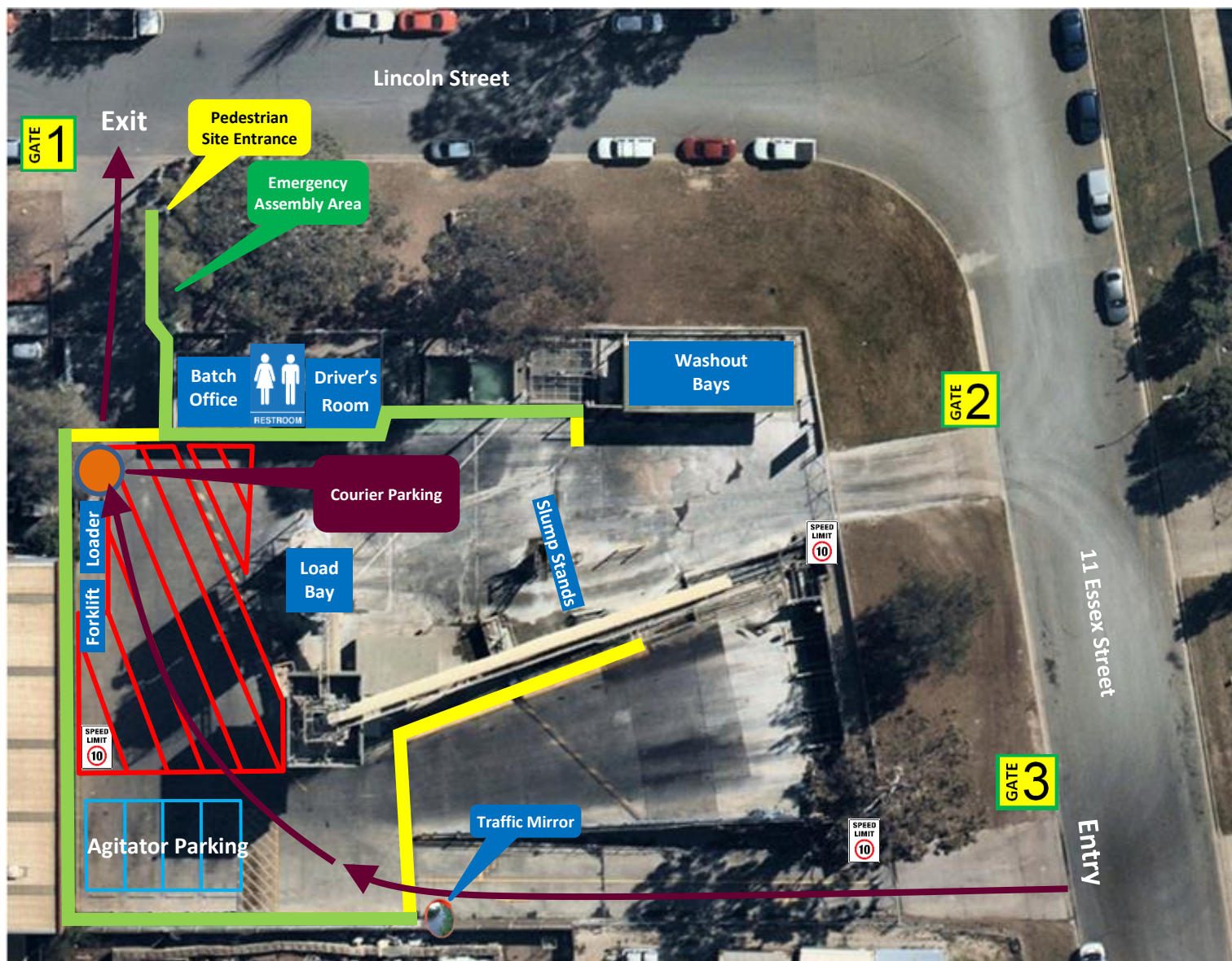
Front End Loader (FEL) and Forklift

- Operate in all areas.
- Have right of way in vehicle operating areas. Always establish positive communication (verbal and/or visual contact) with operator before approaching within 20 metres.




Traffic & Pedestrian Management Plan

Courier Delivery Site Map

(Light Vehicle)



Pedestrians

-  **Protected Walkway**
-  **Designated Walkway**
Pedestrians **MUST** give way to vehicles and plant
-  **Pedestrian Exclusion Zone**
Only authorised pedestrians are permitted to conduct work in operational areas

Vehicles and Plant



Vehicle Route
Enter via Gate 3
Exit via Gate 1

Follow the direction of the vehicle route. Drivers **MUST** not exit their vehicle unless they can access a designated walkway or to complete designated work.



Site Speed Limit
The Site speed limit is restricted to 10kph.



Courier Parking
Couriers must report to the office immediately upon arrival. Follow the pathway directional arrows to and from office, as indicated on the map.



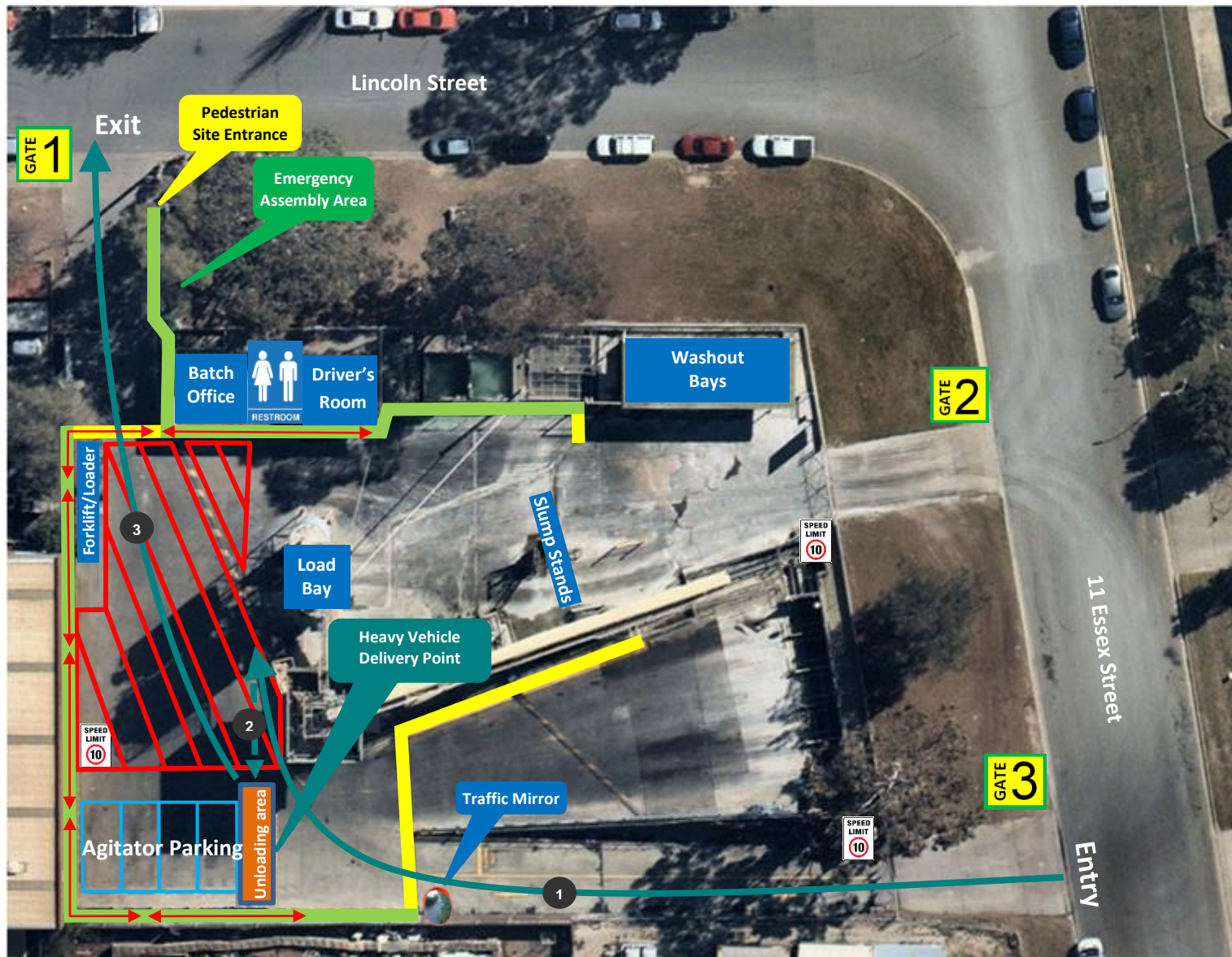
Front End Loader (FEL) and Forklift

- Operate in all areas.
- Have right of way in vehicle operating areas. Always establish positive communication (verbal and/or visual contact) with operator before approaching within 20 metres.




Traffic & Pedestrian Management Plan

Heavy Vehicle Delivery Site Map

(Requiring Forklift removal)



Pedestrians

-  **Protected Walkway**
-  **Designated Walkway**
Pedestrians **MUST** give way to vehicles and plant
-  **Pedestrian Exclusion Zone**
Only authorised pedestrians are permitted to conduct work in operational areas

Vehicles and Plant



Vehicle Route

Enter via Gate 3
Exit via Gate 1

Follow the direction of the vehicle route, steps 1 - 3. Drivers **MUST** not exit their vehicle unless they can access a designated walkway or to complete designated work.



Site Speed Limit

The Site speed limit is restricted to 10kph.

Unloading area



Heavy Vehicle Delivery Point

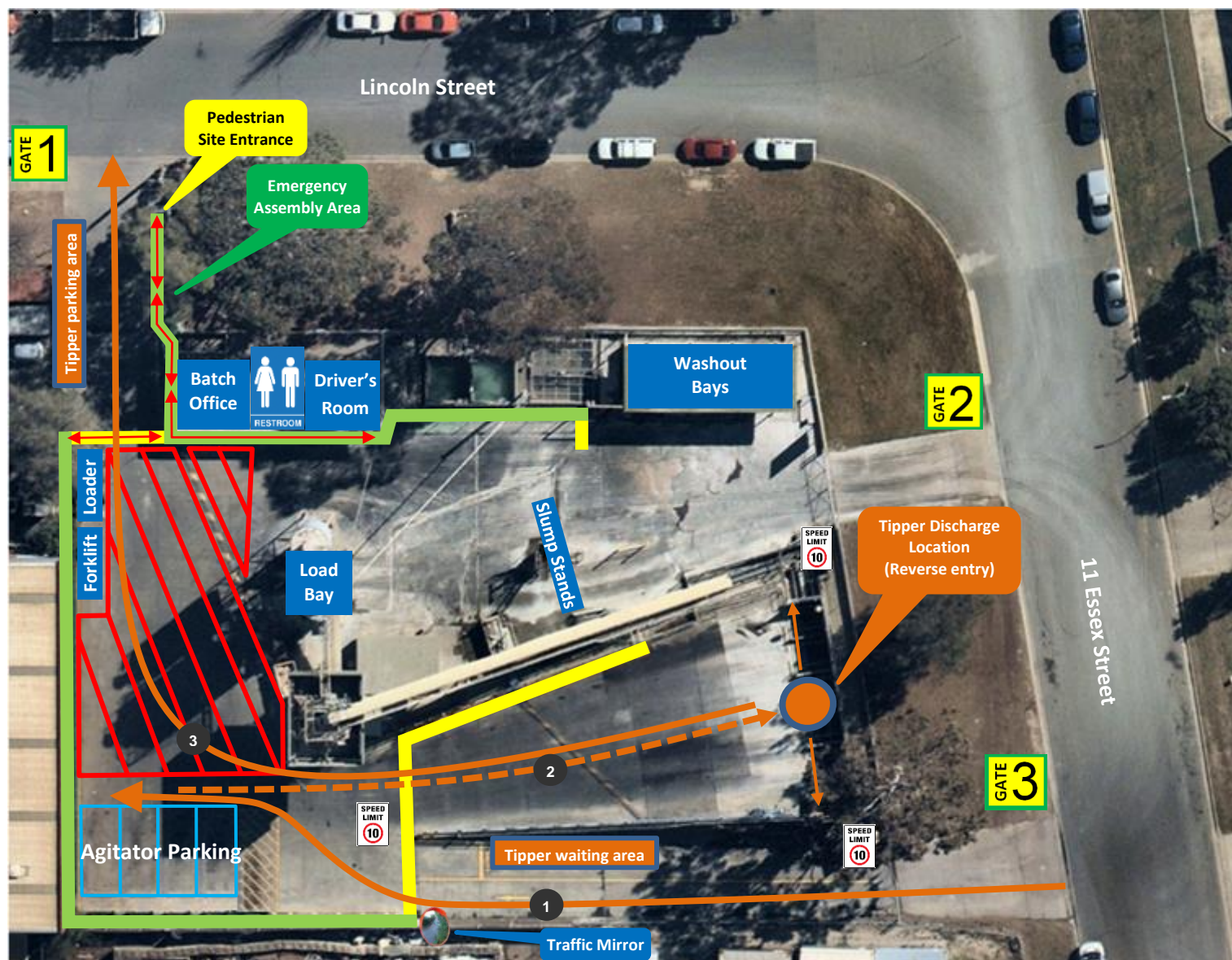
To access the office, follow the pathway directional arrows as indicated on the map.

Front End Loader (FEL) and Forklift




- Operate in all areas.
- Have right of way in vehicle operating areas. Always establish positive communication (verbal and/or visual contact) with operator before approaching within 20 metres.

Traffic & Pedestrian Management Plan

Tipper Site Map



Pedestrians

-  **Protected Walkway**
-  **Designated Walkway**
Pedestrians **MUST** give way to vehicles and plant
-  **Pedestrian Exclusion Zone**
Only authorised pedestrians are permitted to conduct work in operational areas

Vehicles and Plant



Vehicle Route for Truck only

Enter via Gate 3, Exit via Gate 1

Follow the direction of the vehicle route, steps 1 - 3. Drivers **MUST** not exit their vehicle unless they can access a designated walkway or to complete designated work

Vehicle Route for Truck and Trailer

Enter via Gate 3, Exit via Gate 1

1. To unload Trailer, follow the direction of the vehicle route, steps 1 - 3.
 2. Park and unhook Trailer in the Agitator parking area if available, alternatively, park in Essex street.
 3. Repeat steps 1 - 3 to unload Truck.
- Drivers **MUST** not exit their vehicle unless they can access a designated walkway or to complete designated work.



Reverse Entry

Site Speed Limit

The Site speed limit is restricted to 10kph.

Tipper Discharge Location

Reverse entry



Tipper waiting area

Tipper parking area

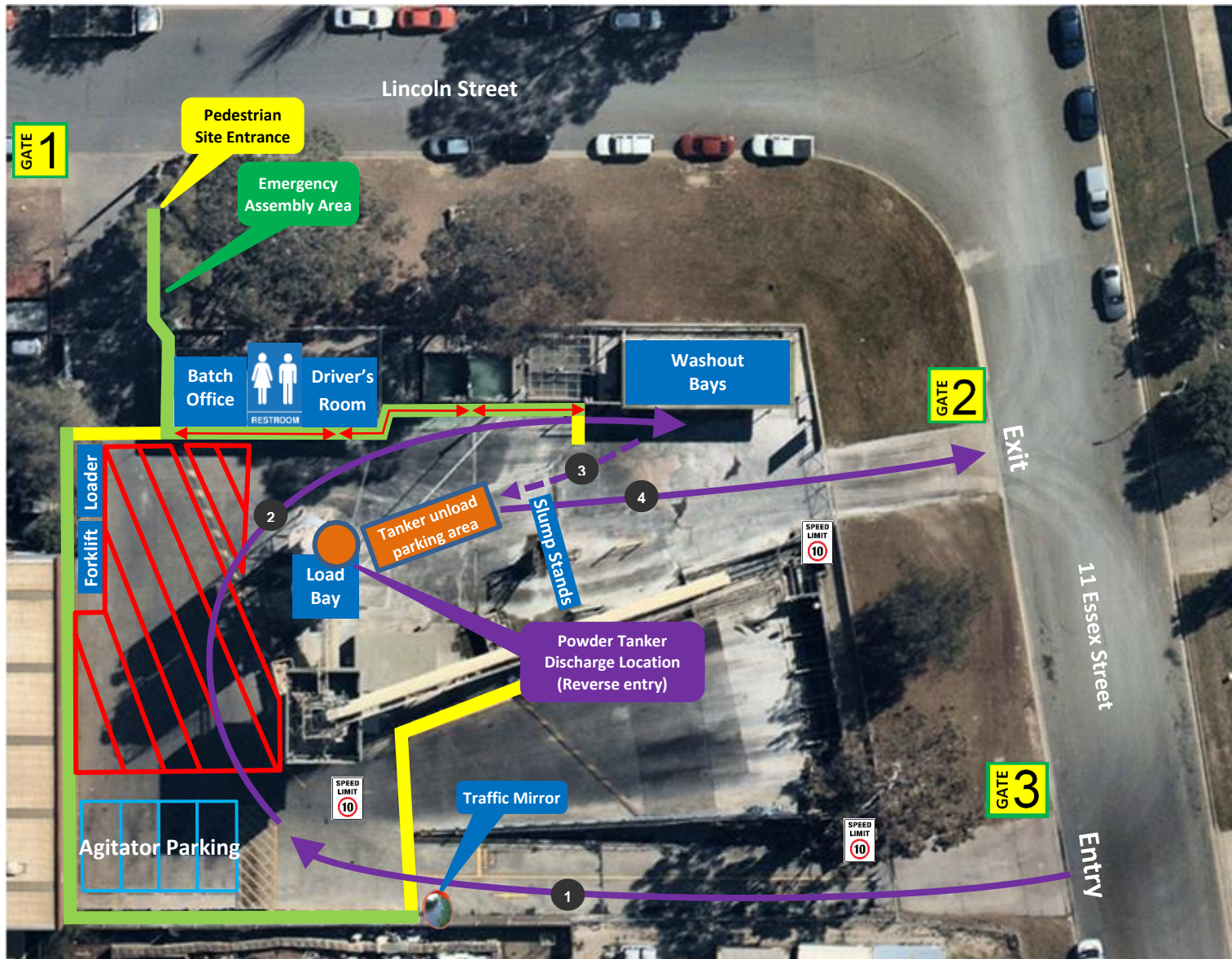


Front End Loader (FEL) and Forklift




- Operate in all areas.
- Have right of way in vehicle operating areas. Always establish positive communication (verbal and/or visual contact) with operator before approaching within 20 metres.

Traffic & Pedestrian Management Plan


Powder Tanker Site Map








Pedestrians

-  **Protected Walkway**
-  **Designated Walkway**
Pedestrians **MUST** give way to vehicles and plant
-  **Pedestrian Exclusion Zone**
Only authorised pedestrians are permitted to conduct work in operational areas

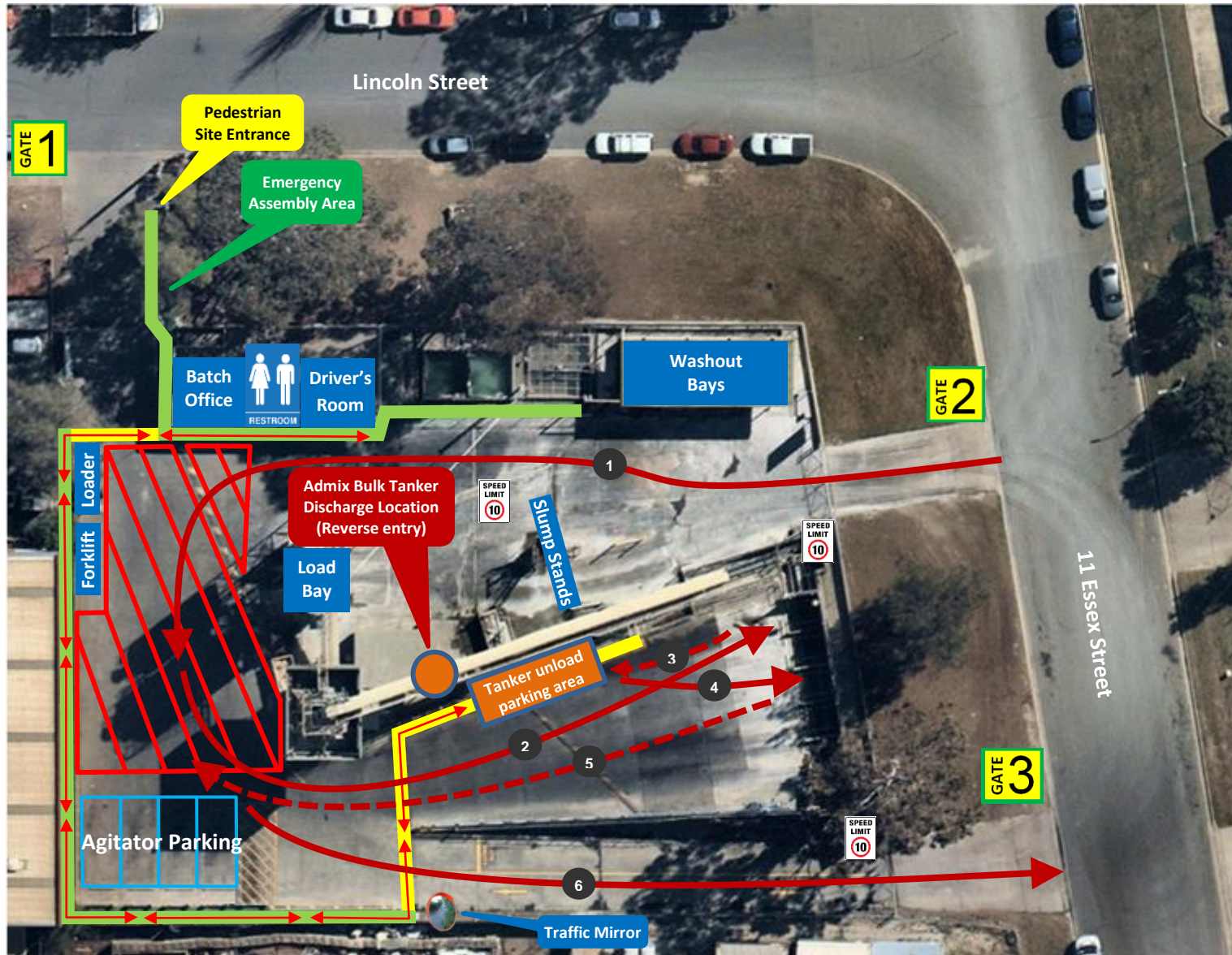
Vehicles and Plant

-  **Vehicle Route**
Enter via Gate 3
Exit via Gate 2




Follow the direction of the vehicle route, steps 1 - 4. Drivers **MUST** not exit their vehicle unless they can access a designated walkway or to complete designated work.
-  **Reverse Entry**
-  **Site Speed Limit**
The Site speed limit is restricted to 10kph.
-  **Powder Tanker Discharge Location**
Reverse entry
-  **Tanker Unload parking area**
Tanker Unload Parking area
Driver must park in Unloading area while discharging. To access the office, follow the pathway directional arrows as indicated on the map.
-  **Front End Loader (FEL) and Forklift**
 - Operate in all areas.
 - Have right of way in vehicle operating areas. Always establish positive communication (verbal and/or visual contact) with operator before approaching within 20 metres.

Traffic & Pedestrian Management Plan







Admix Bulk Tanker Site Map



Pedestrians

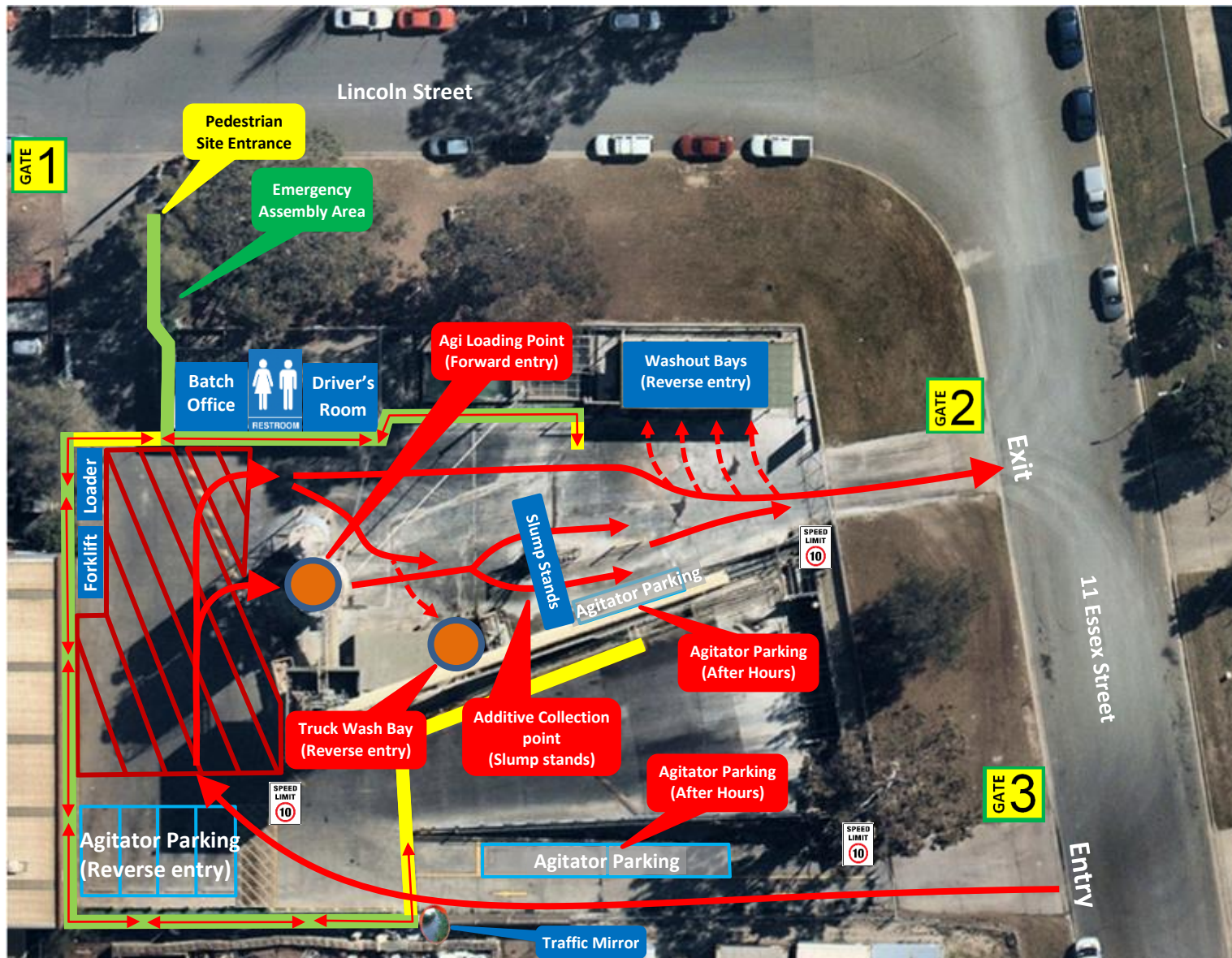
-  **Protected Walkway**
-  **Designated Walkway**
Pedestrians **MUST** give way to vehicles and plant
-  **Pedestrian Exclusion Zone**
Only authorised pedestrians are permitted to conduct work in operational areas

Vehicles and Plant




-  **Vehicle Route**
Enter via Gate 2
Exit via Gate 3
Follow the direction of the vehicle route, steps 1 - 6. Drivers **MUST** not exit their vehicle unless they can access a designated walkway or to complete designated work.
 1. Forward entry onto the site via gate 2
 2. Drive forward up the Material bins ramp towards the top left hand corner
 3. Reverse back and park in the unloading area
 4. Once the load has been discharged, drive forward up the ramp
 5. Reverse down the ramp
 6. Drive forward to gate 3 to exit the site
-  **Reverse Entry**
-  **Site Speed Limit**
The Site speed limit is restricted to 10kph
-  **Admix Bulk Tanker Discharge Location**
Reverse entry
-  **Tanker Unload Parking area**
Driver must park in Unloading area while discharging. To access the office, follow the pathway directional arrows as indicated on the map.
-  **Front End Loader (FEL) and Forklift**
 - Operate in all areas.
 - Have right of way in vehicle operating areas. Always establish positive communication (verbal and/or visual contact) with operator before approaching within 20 metres.

Traffic & Pedestrian Management Plan








Agitator Site Map



Pedestrians

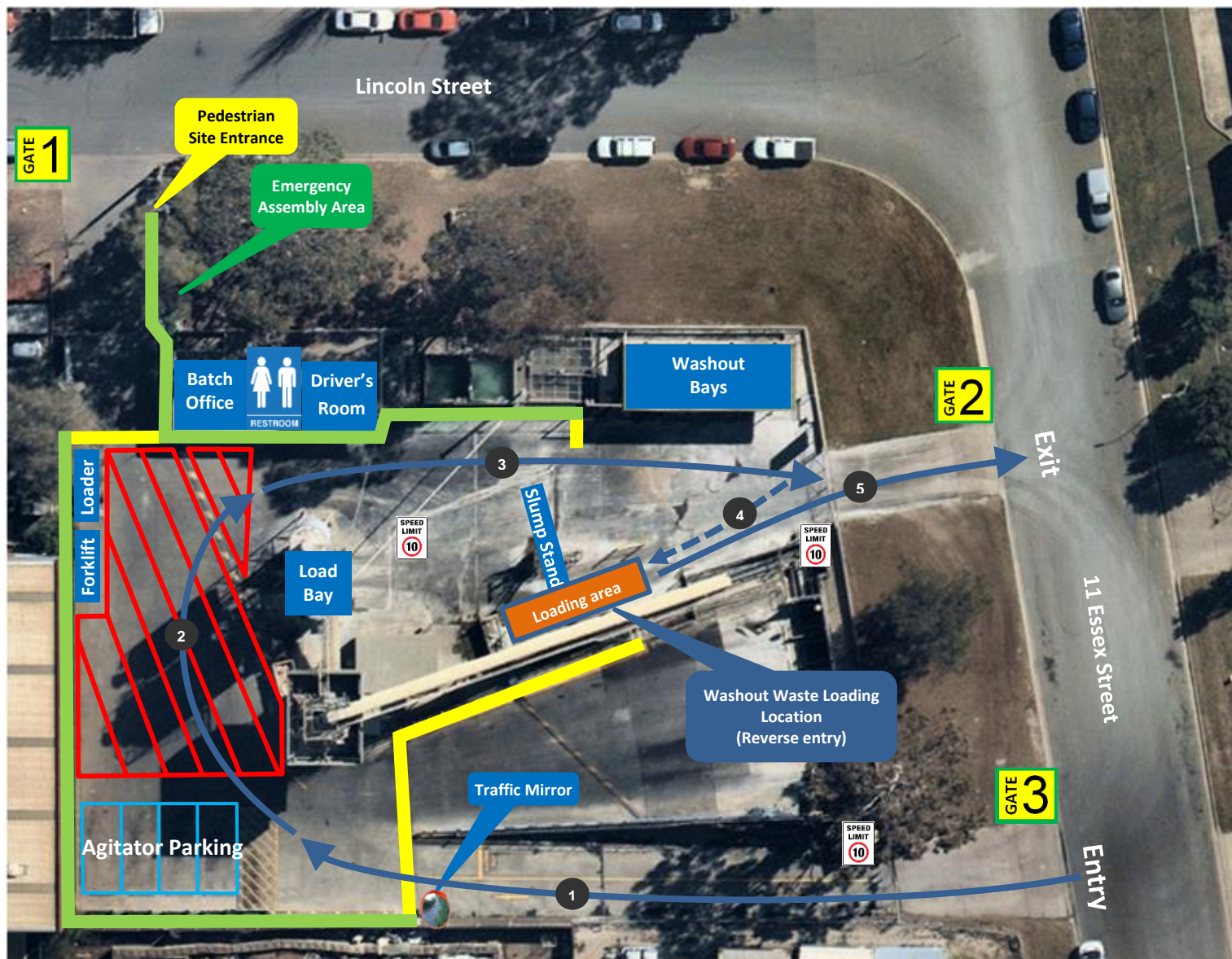
-  **Protected Walkway**
-  **Designated Walkway**
Pedestrians **MUST** give way to vehicles and plant
-  **Pedestrian Exclusion Zone**
Only authorised pedestrians are permitted to conduct work in operational areas

Vehicles and Plant




-  **Vehicle Route**
Enter via Gate 3
Exit via Gate 2
Follow the direction of the vehicle route. Drivers **MUST** not exit their vehicle unless they can access a designated walkway or to complete designated work.
-  **Reverse Entry**
-  **Site Speed Limit**
The Site speed limit is restricted to 10kph
-  **Truck Wash Bay – Reverse entry**
Agitator Loading Point – Forward entry
Note: If additives are required, enter via Gate 3 and proceed directly to the Slump stands. Once the loading of additives is complete, exit through Gate 2 and re-enter the site via Gate 3. Proceed to the Loading point.
-  **Washout Bays**
Enter via Gate 3 and proceed to the Washout bays. Once the washout is complete, exit through Gate 2 and re-enter the site via Gate 3.
-  **Agitator Parking Bays**
Note: After hours, the Truck Wash bay is utilised as an Agitator parking bay.
-  **Front End Loader (FEL) and Forklift**
 - Operate in all areas.
 - Have right of way in vehicle operating areas. Always establish positive communication (verbal and/or visual contact) with operator before approaching within 20 metres.

Traffic & Pedestrian Management Plan

Loading Washout Waste Site Map



Pedestrians

-  **Protected Walkway**
-  **Designated Walkway**
Pedestrians **MUST** give way to vehicles and plant
-  **Pedestrian Exclusion Zone**
Only authorised pedestrians are permitted to conduct work in operational areas

Vehicles and Plant



Vehicle Route
Enter via Gate 3
Exit via Gate 2

Follow the direction of the vehicle route, steps 1 - 5. Drivers **MUST** not exit their vehicle unless they can access a designated walkway or to complete designated work.



Reverse Entry



Site Speed Limit
The Site speed limit is restricted to 10kph



Washout Waste Loading Location
Reverse entry

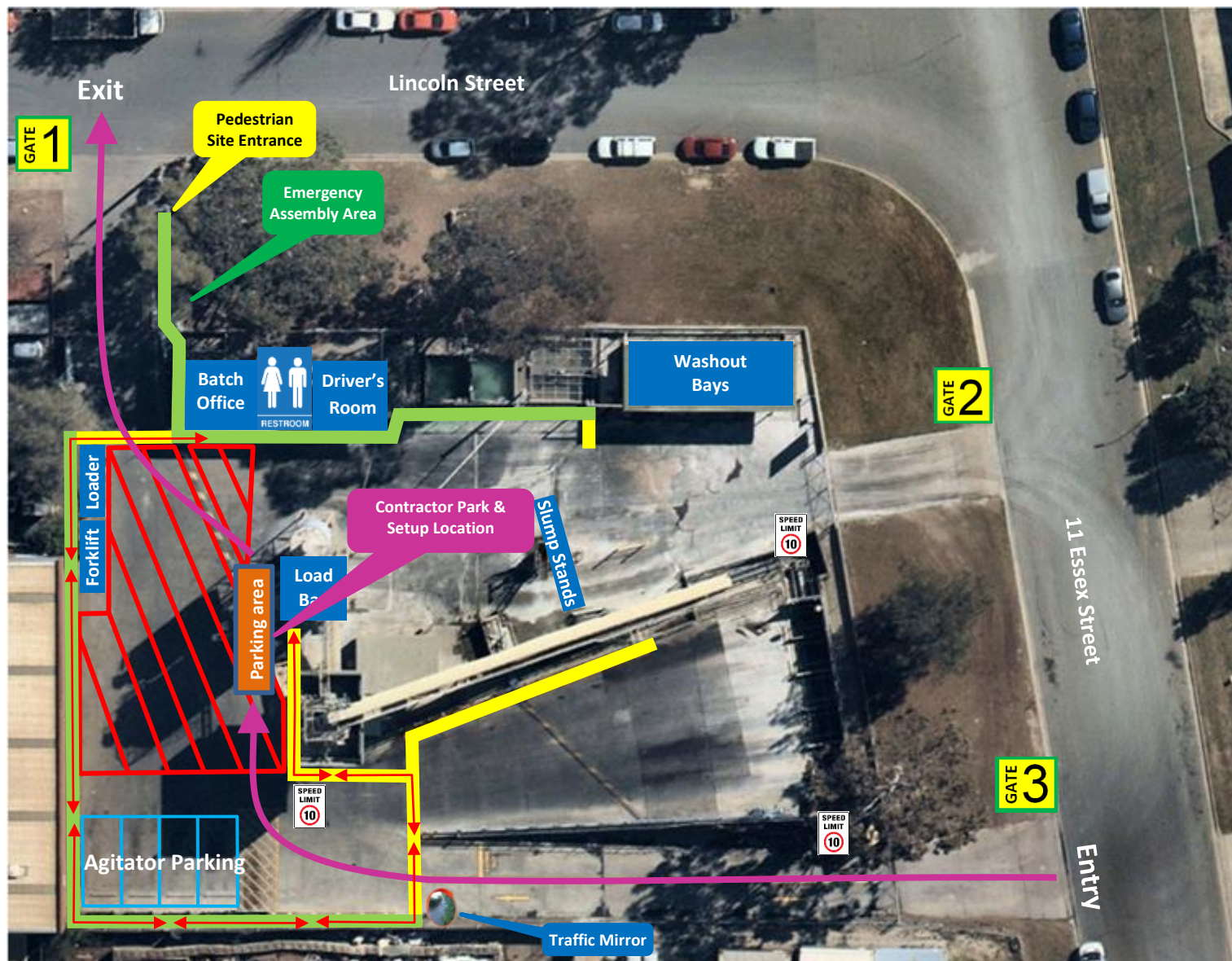


Front End Loader (FEL) and Forklift




- Operate in all areas.
- Have right of way in vehicle operating areas. Always establish positive communication (verbal and/or visual contact) with operator before approaching within 20 metres.

Traffic & Pedestrian Management Plan

Contractor Site Map



Pedestrians

-  **Protected Walkway**
-  **Designated Walkway**
Pedestrians **MUST** give way to vehicles and plant
-  **Pedestrian Exclusion Zone**
Only authorised pedestrians are permitted to conduct work in operational areas

Vehicles and Plant



Vehicle Route

Enter via Gate 3

Exit via Gate 1

Follow the direction of the vehicle route. Drivers **MUST** not exit their vehicle unless they can access a designated walkway or to complete designated work.



Site Speed Limit

The Site speed limit is restricted to 10kph

Parking area



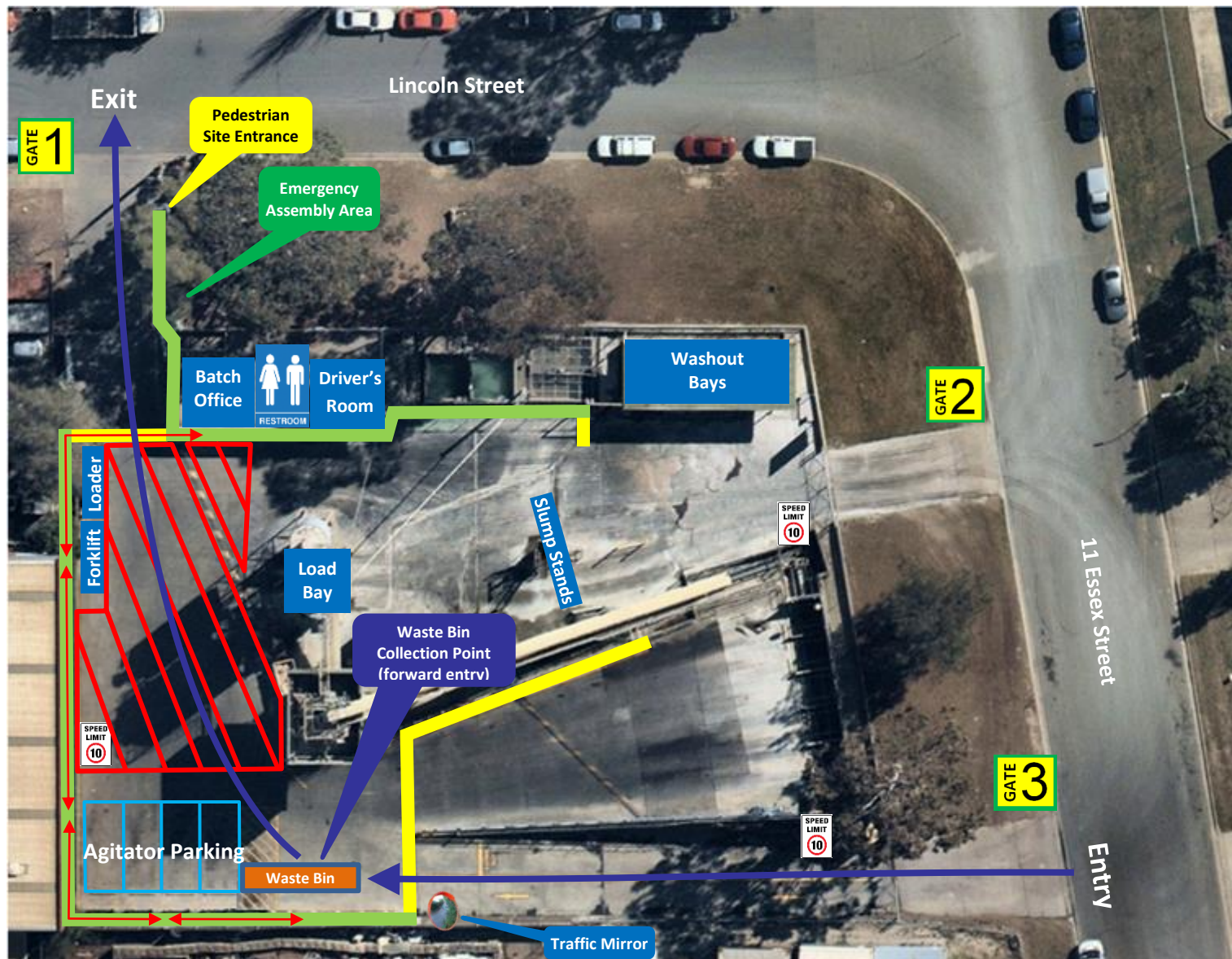
Front End Loader (FEL) and Forklift

- Operate in all areas.
- Have right of way in vehicle operating areas. Always establish positive communication (verbal and/or visual contact) with operator before approaching within 20 metres.




Traffic & Pedestrian Management Plan

Waste Bin Collection Site Map

(Front Lift)



Pedestrians

-  **Protected Walkway**
-  **Designated Walkway**
Pedestrians **MUST** give way to vehicles and plant
-  **Pedestrian Exclusion Zone**
Only authorised pedestrians are permitted to conduct work in operational areas

Vehicles and Plant



Vehicle Route

Enter via Gate 3

Exit via Gate 1

Follow the direction of the vehicle route. Drivers **MUST** not exit their vehicle unless they can access a designated walkway or to complete designated work.



Site Speed Limit

The Site speed limit is restricted to 10kph

Collection Point

Waste Bin Collection Point

When access to the office is required, follow the pathway directional arrows as indicated on the map.



Front End Loader (FEL) and Forklift

- Operate in all areas.
- Have right of way in vehicle operating areas. Always establish positive communication (verbal and/or visual contact) with operator before approaching within 20 metres.