

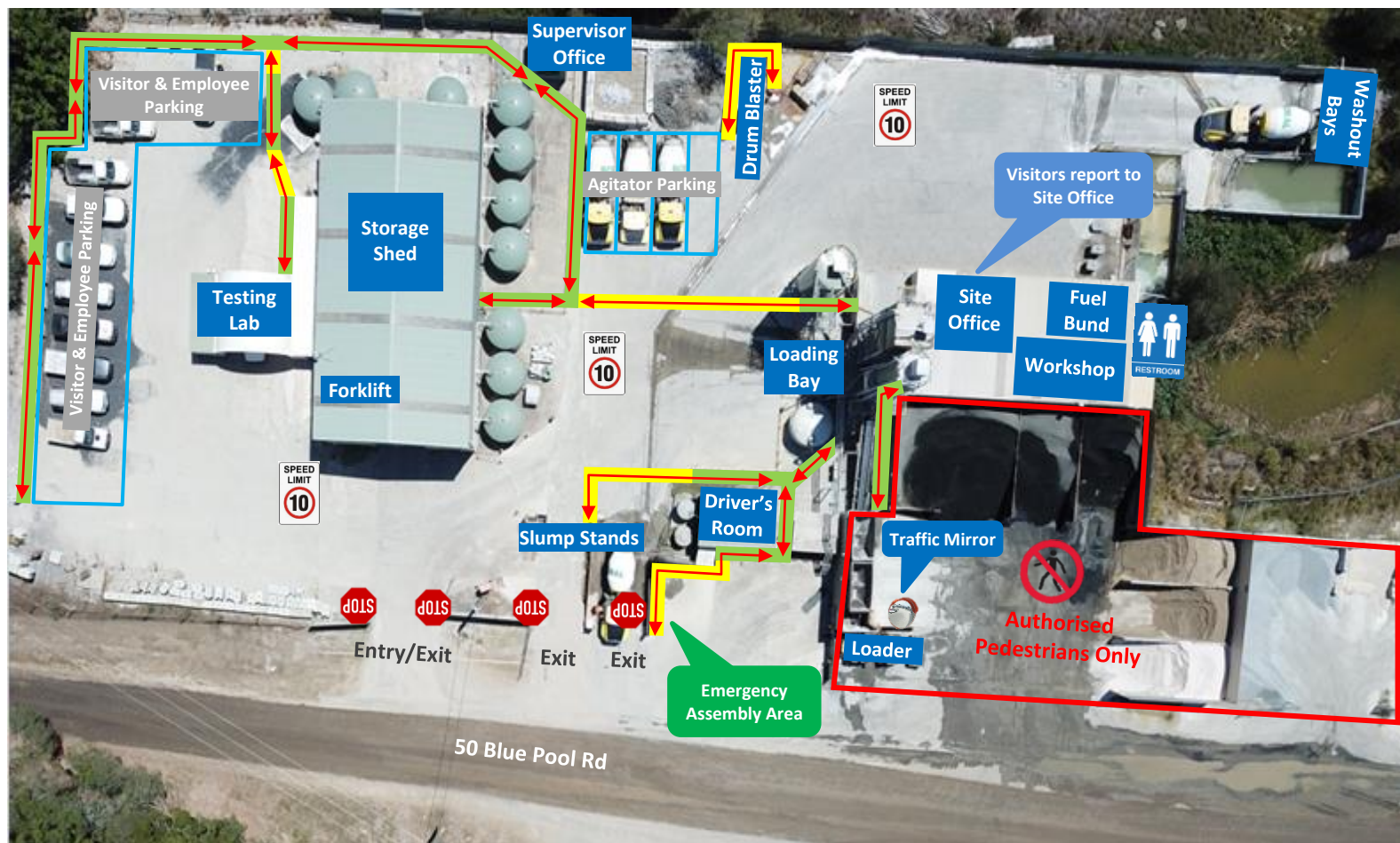


# **Evans Head Concrete Plant**

# Traffic & Pedestrian Management Plan

## Pedestrian Upgrade Site Map

### Boral Concrete – 50 Blue Pool Rd, Evans Head



#### Pedestrians

##### Protected Walkway

**Designated Walkway**  
Pedestrians **MUST** give way to vehicles and plant

**Pedestrian Exclusion Zone**  
Only authorised pedestrians are permitted to conduct work in operational areas

#### Vehicles and Plant



##### Emergency Assembly Area

Located near the exit gate. Proceed to the assembly point using the designated walkways.

##### Visitor Parking

- Visitors park in the Visitor & Employee parking area.
- Parking is reverse entry.
- All visitors must report to the Site office immediately upon arrival. Follow the pathway directional arrows to and from the site office, as indicated on the map.



##### Site Speed Limit

The site speed limit is restricted to 10kph.



##### 2-Way Communication

All radio communication on this site is via UHF Channel 10 and Boral radio channel 27.



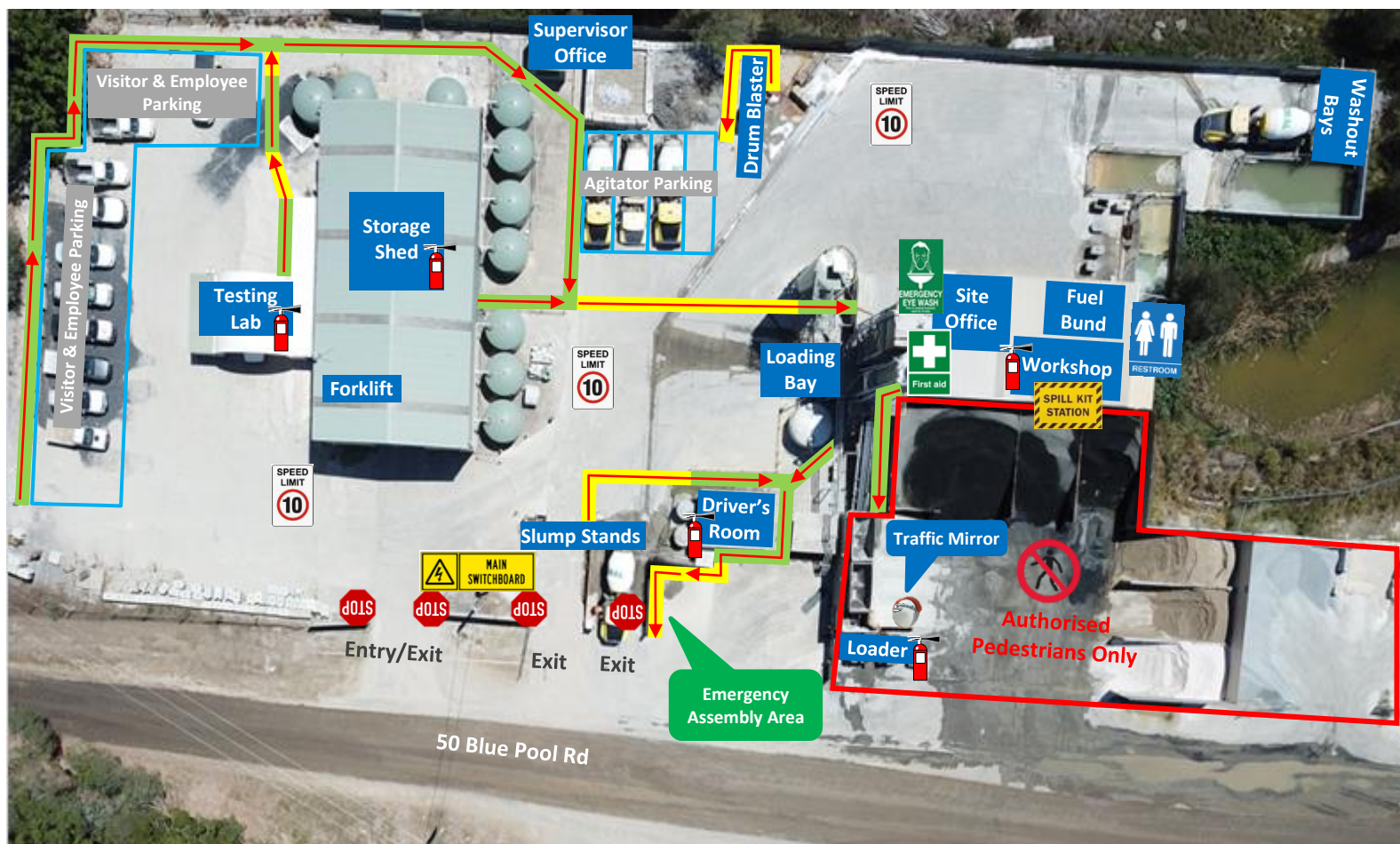
##### Front End Loader (FEL) and Forklift

- Operate in all areas.
- Have right of way in vehicle operating areas. Always establish positive communication (verbal and/or visual contact) with operator before approaching within 20 metres. Communicate with the Loader operator via UHF Channel 10.

# Traffic & Pedestrian Management Plan

## Emergency Site Map

### Boral Concrete – 50 Blue Pool Rd, Evans Head



#### Pedestrians

- Protected Walkway**
- Designated Walkway**  
Pedestrians **MUST** give way to vehicles and plant
- Pedestrian Exclusion Zone**  
Only authorised pedestrians are permitted to conduct work in operational areas

#### Emergency Equipment



**Main Electrical**  
Located near the entry gate



**Spill Kit**  
Located in Workshop



**First Aid**  
Located in the Site Office



**Emergency Eye Wash**  
Located in the Site Office



**Emergency Assembly Area**  
Located near the exit gate. Follow the pathway directional arrows as indicated on the map



**Fire Extinguishers**  
Located in the following areas:  
Driver's Room, Testing Lab, Storage Shed, Workshop, Front End Loader, all trucks are equipped with fire extinguishers