

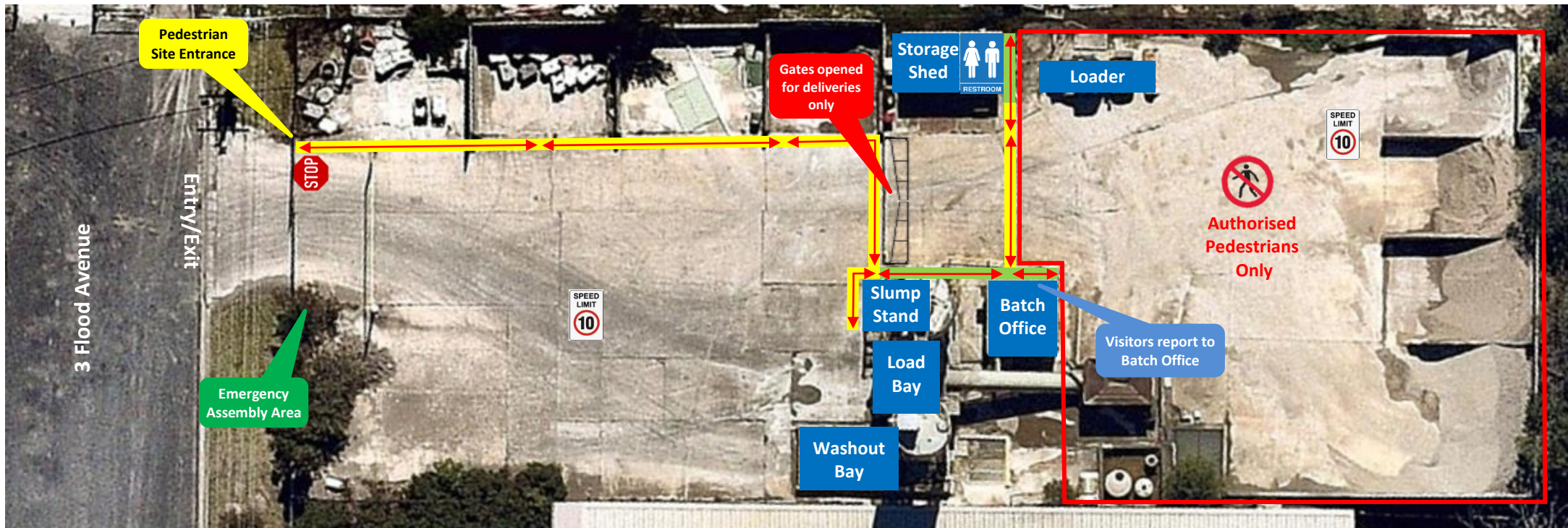


Sussex Inlet Concrete Plant




Traffic & Pedestrian Management Plan

Pedestrian Upgrade Site Map

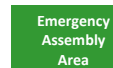
Boral Concrete – 3 Flood Avenue, Sussex Inlet



Pedestrians

-  **Protected Walkway**
-  **Designated Walkway**
Pedestrians **MUST** give way to vehicles and plant
-  **Pedestrian Exclusion Zone**
Only authorised pedestrians are permitted to conduct work in operational areas

Vehicles and Plant



Emergency Assembly Area

Located inside the entry/exit gate. Proceed to the assembly point using the designated walkways.

Visitor Parking

- No visitor parking on site (street parking only).
- Visitors must enter the site via the pedestrian site entrance.
- All visitors must report to the Batch office immediately upon arrival. Follow the pathway directional arrows to and from the Batch office, as indicated on the map.

Site Speed Limit

The site speed limit is restricted to 10kph.

2-Way Communication

All radio communication on this site is via UHF Channel 40 and Boral radio frequency SUSSEX.

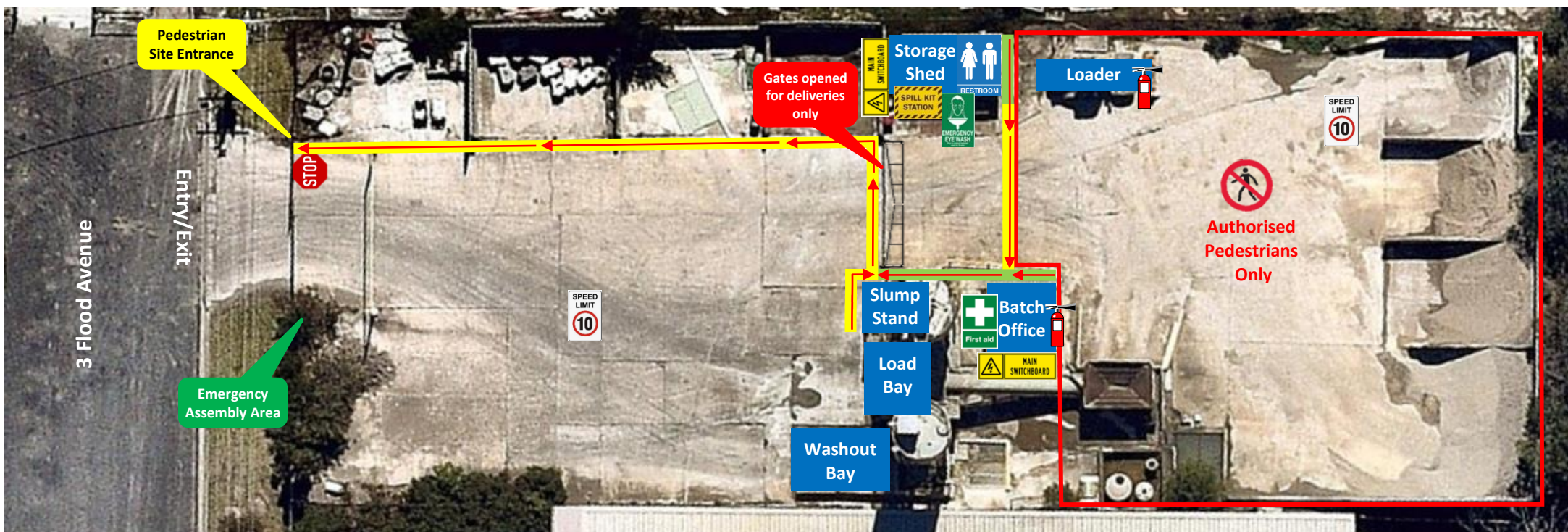
Front End Loader (FEL)

- Operates in all areas.
- Has right of way in vehicle operating areas. Always establish positive communication (verbal and/or visual contact) with operator before approaching within 20 metres. Communicate with the Loader operator via UHF Channel 40.

Traffic & Pedestrian Management Plan

Emergency Site Map

Boral Concrete – 3 Flood Avenue, Sussex Inlet



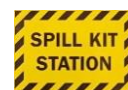
Pedestrians

-  **Protected Walkway**
-  **Designated Walkway**
Pedestrians **MUST** give way to vehicles and plant
-  **Pedestrian Exclusion Zone**
Only authorised pedestrians are permitted to conduct work in operational areas

Emergency Equipment



First Aid
Located in Batch Office



Spill Kit
Located in Storage Shed



Emergency Eye Wash
Located on external front wall of Storage Shed



Main Electrical
Located beside Storage shed & in Batch office



Emergency Assembly Area
Located inside the entry/exit gate. Follow the pathway directional arrows as indicated on the map



Fire Extinguishers
Located in the following areas:
Batch Office, Front End Loader, all trucks are equipped with fire extinguishers.