



Woolgoolga Concrete Plant

Traffic & Pedestrian Management

Pedestrian Upgrade Site Map

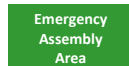
Boral Concrete – 8 Willis Rd, Woolgoolga



Pedestrians

- Protected Walkway**
- Designated Walkway**
Pedestrians **MUST** give way to vehicles and plant
- Pedestrian Exclusion Zone**
Only authorised pedestrians are permitted to conduct work in operational areas

Vehicles and Plant



Emergency Assembly Area

Located at the entry/exit gate. Proceed to the assembly point using the designated walkways.

Light Vehicle Parking

- There are 4 parking spaces allocated to Visitors and Employees.
- Parking is front facing
- All visitors must report to the Site Office immediately upon arrival. Follow the pathway directional arrows to and from the Site Office, as indicated on the map.

Site Speed Limit

The site speed limit is restricted to 10kph.

2-Way Communication

All radio communication on this site is via UHF Channel 10 and Boral radio channel 26.

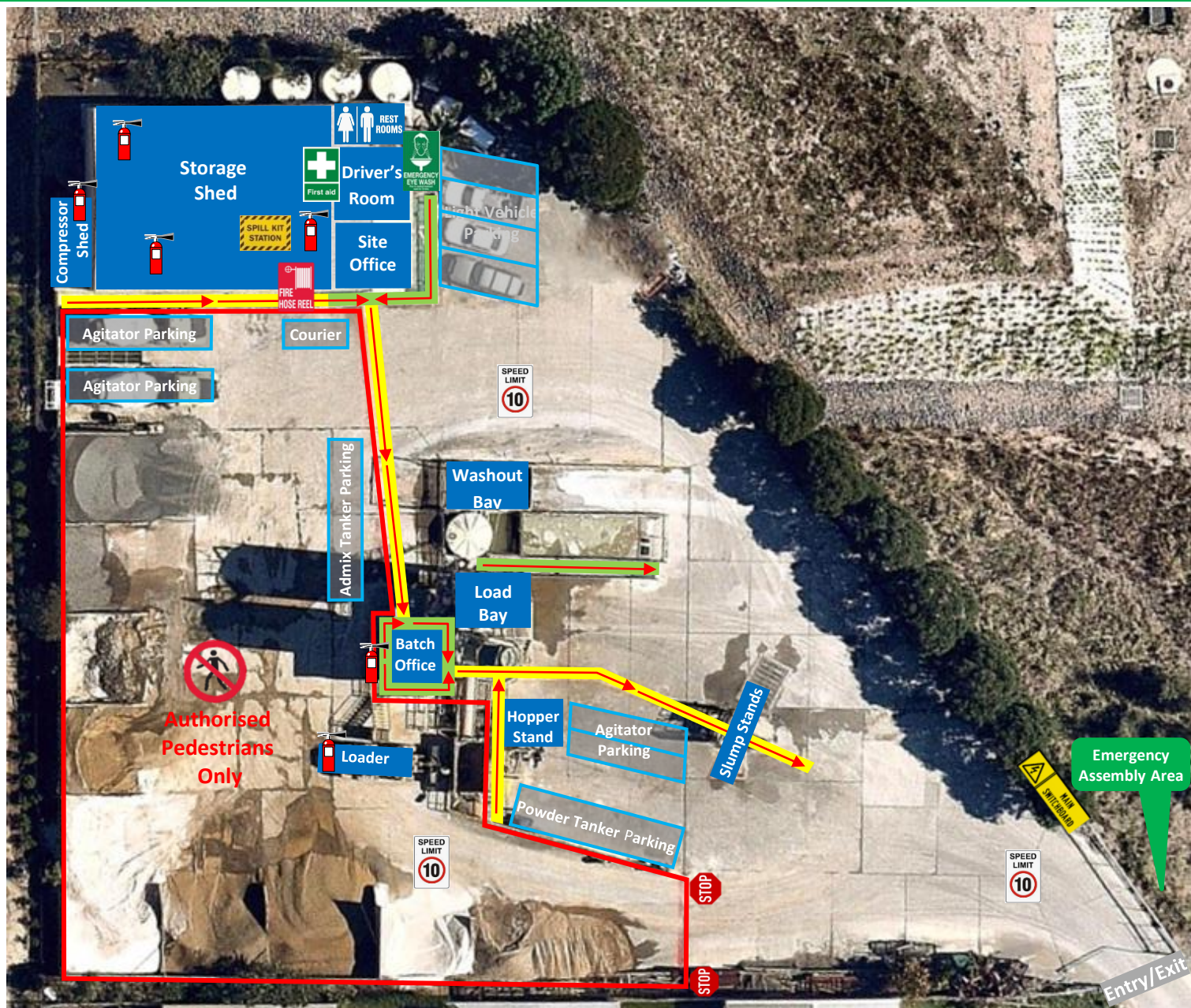
Front End Loader (FEL)

- Operates in all areas.
- Has right of way in vehicle operating areas. Always establish positive communication (verbal and/or visual contact) with operator before approaching within 20 metres. Communicate with the Loader operator via UHF Channel 10.




Traffic & Pedestrian Management Plan

Emergency Site Map

Boral Concrete – 8 Willis Rd, Woolgoolga



Pedestrians

-  **Protected Walkway**
-  **Designated Walkway**
Pedestrians **MUST** give way to vehicles and plant
-  **Pedestrian Exclusion Zone**
Only authorised pedestrians are permitted to conduct work in operational areas

Emergency Equipment



Emergency Eye Wash
Located in Driver's Room



First Aid
Located in Driver's Room



Fire Hose Reel
Located outside Storage Shed



Spill Kit
Located inside Storage Shed



Main Electrical
Located inside the entry/exit gate



Emergency Assembly Area
Located at the entry/exit gate. Follow the pathway directional arrows as indicated on the map



Fire Extinguishers
Located in the following areas:
Batch Office, Compressor Shed, 3 located inside Storage Shed, Front End Loader, all trucks are equipped with fire extinguishers.