

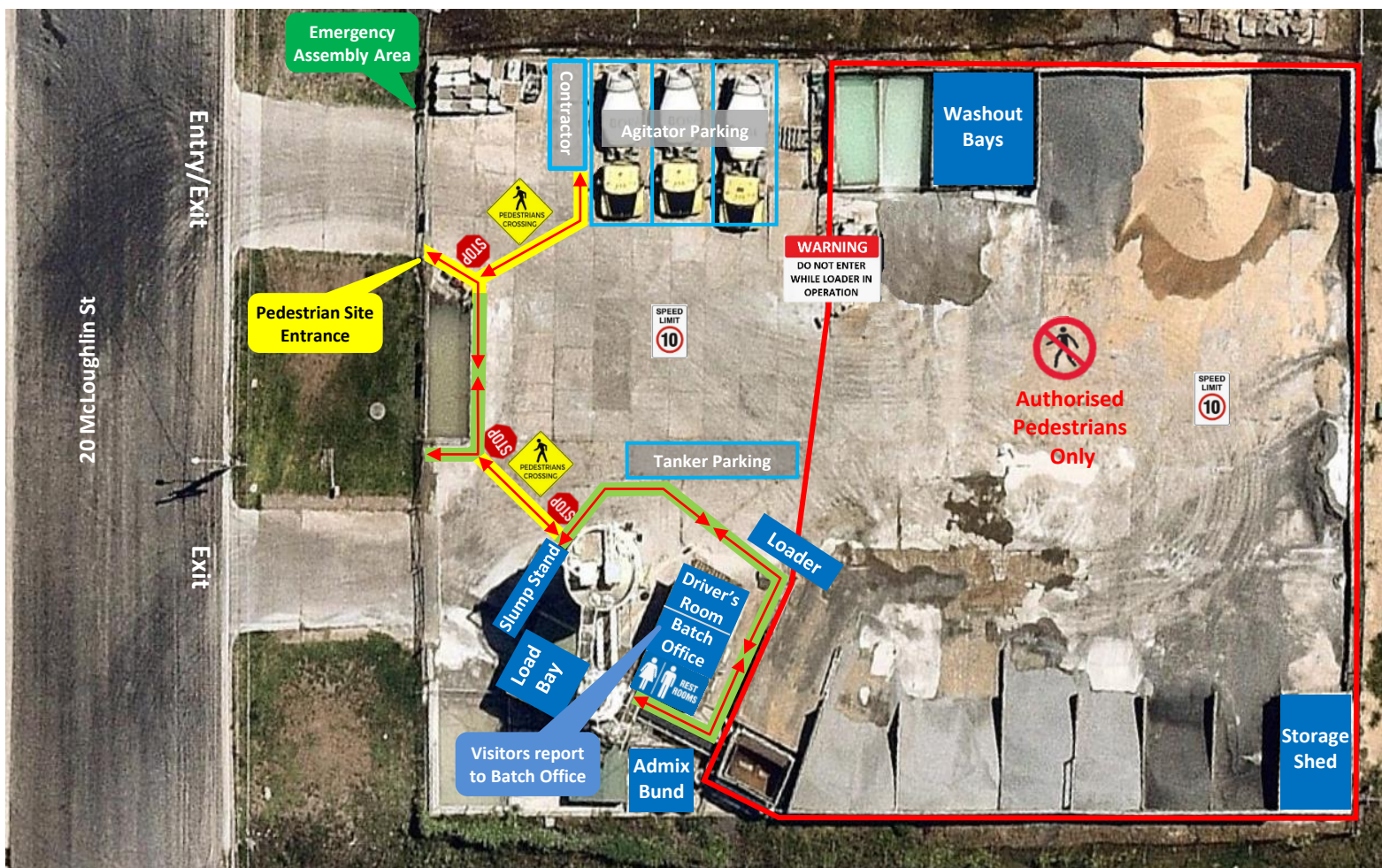


# **Scone Concrete Plant**

# Traffic & Pedestrian Management

## Pedestrian Upgrade Site Map

### Boral Concrete – 20 McLoughlin St, Scone



#### Pedestrians

##### Protected Walkway

##### Designated Walkway

Pedestrians **MUST** give way to vehicles and plant

##### Pedestrian Exclusion Zone

Only authorised pedestrians are permitted to conduct work in operational areas

#### Vehicles and Plant



##### Emergency Assembly Area

Located outside the entry/exit gate. Proceed to the assembly point using the designated walkways.

##### Light Vehicle Parking

- There is no Visitor or Employee parking on site (street parking only).
- Enter the site via the Pedestrian Site entrance.
- All visitors must report to the Batch Office (located downstairs) immediately upon arrival. Follow the pathway directional arrows to and from the Batch Office, as indicated on the map.

##### Site Speed Limit

The site speed limit is restricted to 10kph.

##### 2-Way Communication

All radio communication on this site is via UHF Channel 10.

##### Front End Loader (FEL)

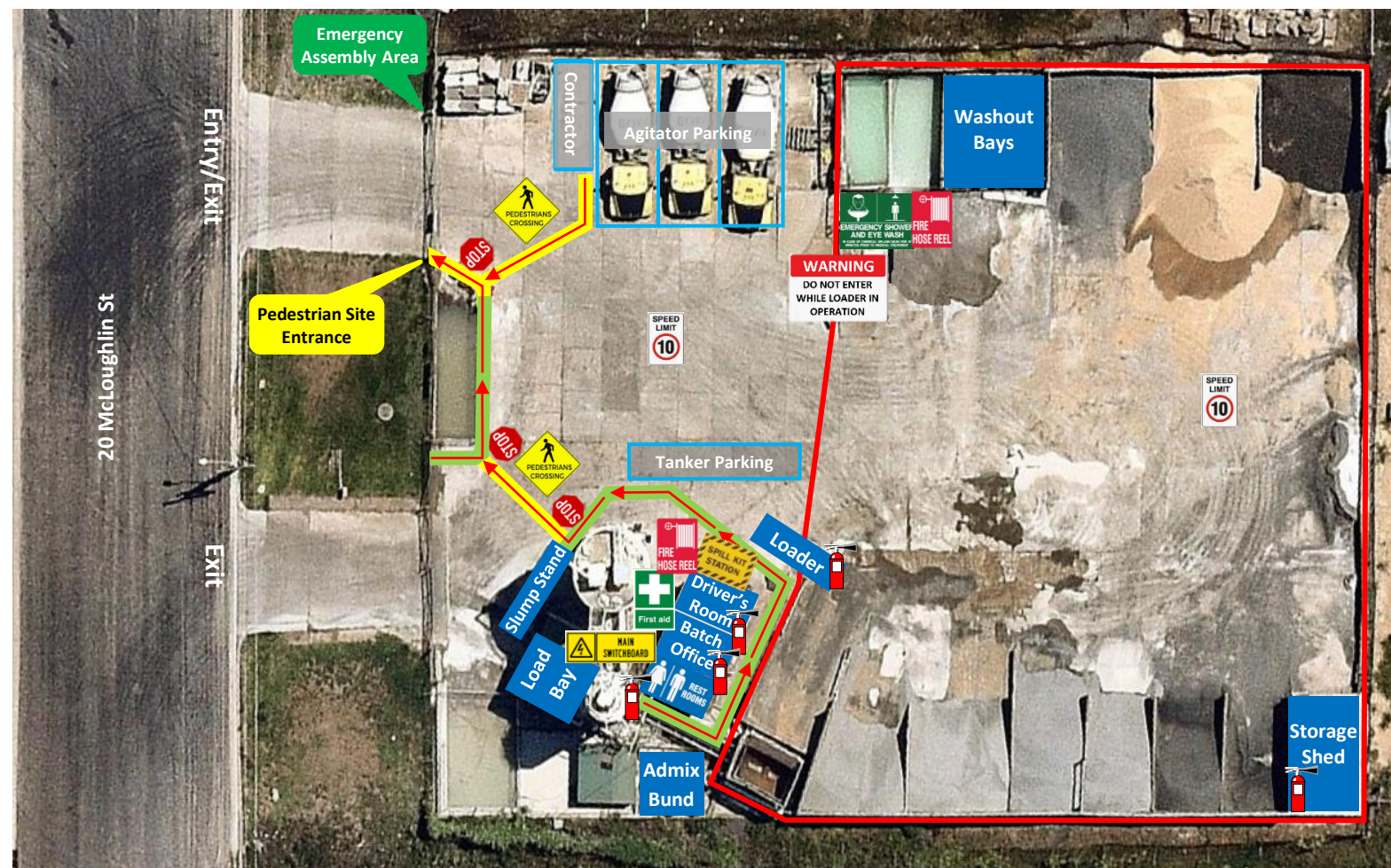
- Operates in all areas.
- Has right of way in vehicle operating areas. Always establish positive communication (verbal and/or visual contact) with operator before approaching within 20 metres. Communicate with the Loader operator via UHF Channel 10.



# Traffic & Pedestrian Management Plan

## Emergency Site Map

### Boral Concrete – 20 McLoughlin St, Scone



#### Pedestrians

**Protected Walkway**

**Designated Walkway**  
Pedestrians **MUST** give way to vehicles and plant

**Pedestrian Exclusion Zone**  
Only authorised pedestrians are permitted to conduct work in operational areas

#### Emergency Equipment



**Emergency Eye Wash & Shower**  
Located in front of Wedge Pits



**First Aid**  
Located in Driver's Room (upstairs)



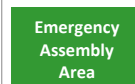
**Fire Hose Reel**  
Located beneath stairs to Driver's Room and in front of Wedge Pits



**Spill Kit**  
Located beneath stairs to Driver's Room



**Main Electrical**  
Located on external front wall of Batch Office (downstairs)



**Emergency Assembly Area**  
Located outside the entry/exit gate. Follow the pathway directional arrows as indicated on the map



**Fire Extinguishers**  
Located in the following areas:  
Driver's Room (upstairs), external rear wall of amenities block (downstairs), Batch Office (downstairs), Storage Shed, Front End Loader, all trucks are equipped with fire extinguishers.