



# **Enfield Concrete Plant**

# Traffic and Pedestrian Management Plan

## Emergency Site Map

Boral Concrete – 1/5 Norfolk Rd, Greenacre



### Pedestrians

- Protected Walkway**
- Designated Walkway**  
Pedestrians **MUST** give way to vehicles and plant
- Pedestrian Exclusion Zone**  
Only authorised pedestrians are permitted to conduct work in operational areas

### Emergency Equipment



**First Aid**  
Located in Office



**Fire Hose**  
Located beside Loading Bay



**Spill Kit**  
Located adjacent to Office block



**Fire Blanket**  
Located in office & Driver's Room



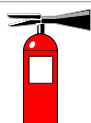
**Emergency Assembly Area**  
Located at rear of Agitator Parking area



**Main Electrical**



**Emergency Eye Wash**  
Located at rear of Office block & behind the Returned Concrete area



#### Fire Extinguishers

Located in the following areas:

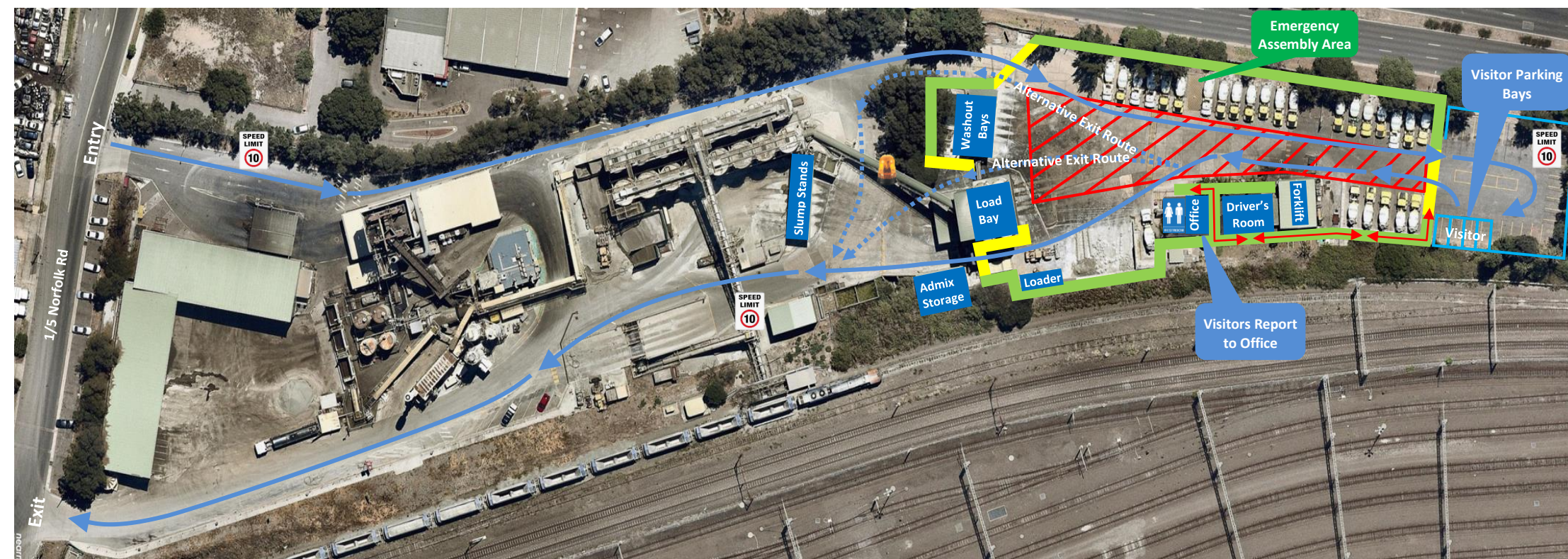
Office, Driver's Room, Slump Stands, 2 in Additive Storage area, Returned Concrete area, Front End Loader, all trucks are equipped with fire extinguishers.  
Loading Bay: Ground level, Level 1, Level 2, Level 3.

**Warning:** When light is flashing, all vehicles in the immediate area **MUST** stop and give way to Agitators.







# Traffic and Pedestrian Management Plan

## Visitor Site Map



### Pedestrians

-  **Protected Walkway**
-  **Designated Walkway**  
Pedestrians **MUST** give way to vehicles and plant
-  **Pedestrian Exclusion Zone**  
Only authorised pedestrians are permitted to conduct work in operational areas

 **Warning:** When light is flashing, all vehicles in the immediate area **MUST** stop and give way to Agitators.

### Vehicles and Plant



#### Vehicle Route

Follow the direction of the vehicle route. Drivers **MUST** not exit their vehicle unless they can access a designated walkway or to complete designated work.



#### Alternative Exit Route

To be used only when the primary exit route is blocked



#### Visitor Parking

- There are 4 parking bays allocated to Visitors. Parking is reverse entry.
- All visitors must report to the Office immediately upon arrival. Follow the pathway directional arrows to and from the Office, as indicated on the map.



#### Site Speed Limit

The site speed limit is restricted to 10kph.



#### Front End Loader (FEL) and Forklift

- Operate in all areas.
- Have right of way in vehicle operating areas. Always establish positive communication (verbal and/or visual contact) with operator before approaching within 20 metres. Communicate with the Loader operator via UHF Channel 38.






# Traffic and Pedestrian Management Plan

## Courier Delivery Site Map

(Light Vehicle)



### Pedestrians

-  **Protected Walkway**
-  **Designated Walkway**  
Pedestrians **MUST** give way to vehicles and plant
-  **Pedestrian Exclusion Zone**  
Only authorised pedestrians are permitted to conduct work in operational areas



**Warning:** When light is flashing, all vehicles in the immediate area **MUST** stop and give way to Agitators.

### Vehicles and Plant



#### Vehicle Route

Follow the direction of the vehicle route. Drivers **MUST** not exit their vehicle unless they can access a designated walkway or to complete designated work.



#### Alternative Exit Route

To be used only when the primary exit route is blocked.



#### Courier Parking

- Courier parking is located in front of the Office block.
- Report to the Office upon arrival.



#### Site Speed Limit

The site speed limit is restricted to 10kph.



#### Front End Loader (FEL) and Forklift

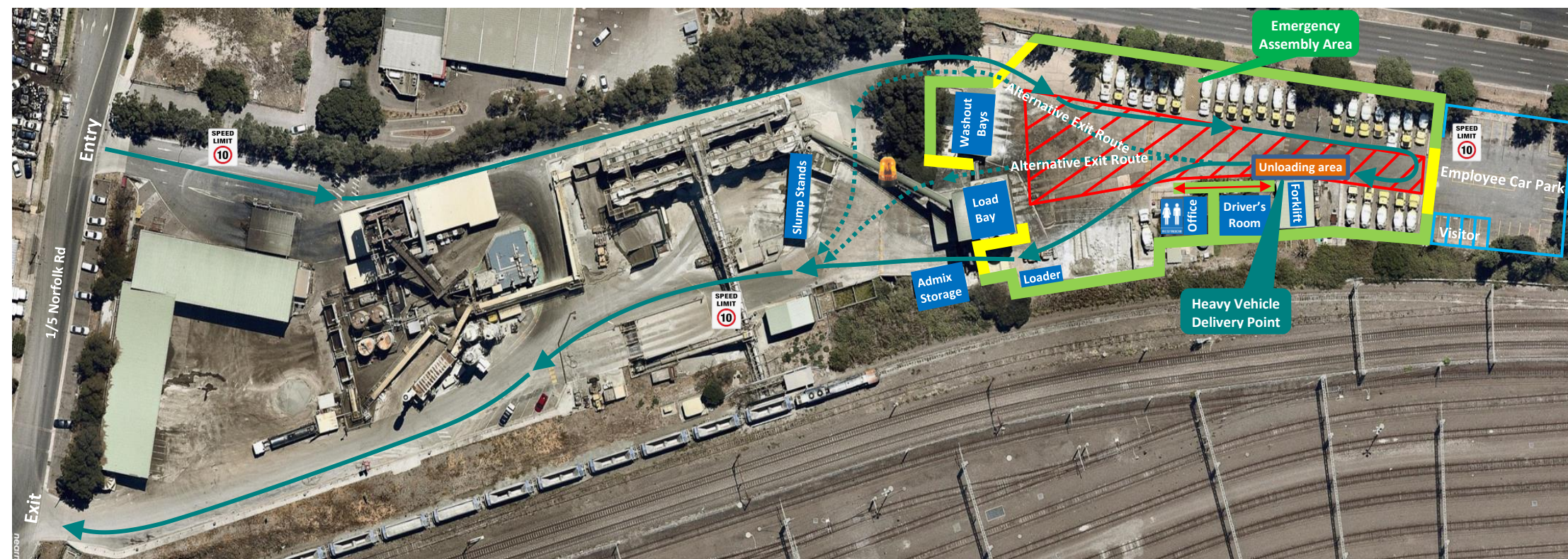
- Operate in all areas.
- Have right of way in vehicle operating areas. Always establish positive communication (verbal and/or visual contact) with operator before approaching within 20 metres. Communicate with the Loader operator via UHF Channel 38.



# Traffic and Pedestrian Management Plan

## Heavy Vehicle Delivery Site Map

(Requiring Forklift Removal)



### Pedestrians

- Protected Walkway**
- Designated Walkway**  
Pedestrians **MUST** give way to vehicles and plant
- Pedestrian Exclusion Zone**  
Only authorised pedestrians are permitted to conduct work in operational areas



**Warning:** When light is flashing, all vehicles in the immediate area **MUST** stop and give way to Agitators.

### Vehicles and Plant



#### Vehicle Route

Follow the direction of the vehicle route. Drivers **MUST** not exit their vehicle unless they can access a designated walkway or to complete designated work.



#### Alternative Exit Route

To be used only when the primary exit route is blocked



#### Heavy Vehicle Delivery Location

To access the Office, follow the pathway directional arrow as indicated on the map.



#### Site Speed Limit

The site speed limit is restricted to 10kph.



#### Front End Loader (FEL) and Forklift

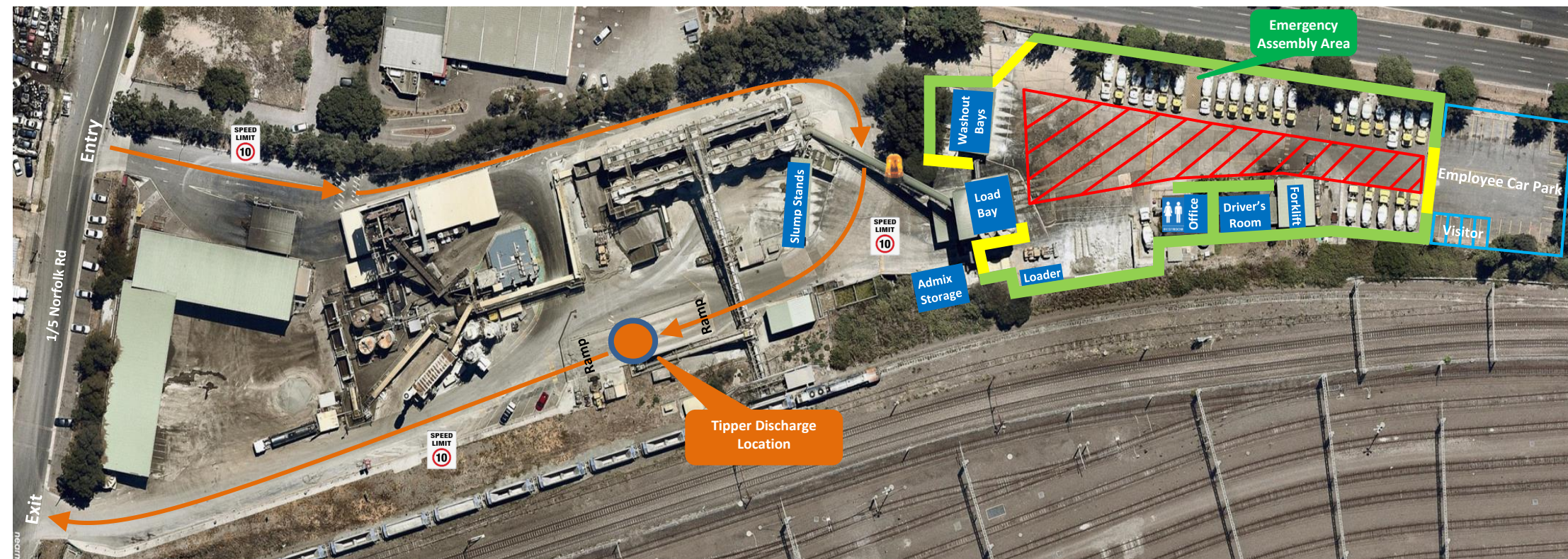
- Operate in all areas.
- Have right of way in vehicle operating areas. Always establish positive communication (verbal and/or visual contact) with operator before approaching within 20 metres. Communicate with the Loader operator via UHF Channel 38.






# Traffic and Pedestrian Management Plan

## Tipper Site Map

(Driver must contact office on UHF channel 38 prior to entering site)



### Pedestrians

-  **Protected Walkway**
-  **Designated Walkway**  
Pedestrians **MUST** give way to vehicles and plant
-  **Pedestrian Exclusion Zone**  
Only authorised pedestrians are permitted to conduct work in operational areas



**Warning:** When light is flashing, all vehicles in the immediate area **MUST** stop and give way to Agitators.

### Vehicles and Plant



#### Vehicle Route

Follow the direction of the vehicle route. Drivers **MUST** not exit their vehicle unless they can access a designated walkway or to complete designated work.



#### Tipper Discharge Location

To access the Office, follow the pathway directional arrow as indicated on the map.



#### Site Speed Limit

The site speed limit is restricted to 10kph.



#### Front End Loader (FEL) and Forklift

- Operate in all areas.
- Have right of way in vehicle operating areas. Always establish positive communication (verbal and/or visual contact) with operator before approaching within 20 metres. Communicate with the Loader operator via UHF Channel 38.



# Traffic and Pedestrian Management Plan

## Powder Tanker Site Map

(Driver must contact office on UHF channel 38 prior to entering site)



### Pedestrians

- Protected Walkway**
- Designated Walkway**  
Pedestrians **MUST** give way to vehicles and plant
- Pedestrian Exclusion Zone**  
Only authorised pedestrians are permitted to conduct work in operational areas



**Warning:** When light is flashing, all vehicles in the immediate area **MUST** stop and give way to Agitators.

### Vehicles and Plant



#### Vehicle Route

Follow the direction of the vehicle route. Drivers **MUST** not exit their vehicle unless they can access a designated walkway or to complete designated work.

#### Reverse Entry



#### Tanker Waiting Area

Prior to discharging, driver must park vehicle in waiting area and approach office for instructions. Follow the pathway directional arrows to and from the office, as indicated on the map.



#### Powder Tanker Discharge Locations

- Location 1** – Tip-up Tankers must reverse into location 1
- Location 2** – Forward entry only, into location 2



#### Site Speed Limit

The site speed limit is restricted to 10kph.



#### Front End Loader (FEL) and Forklift

- Operate in all areas.
- Have right of way in vehicle operating areas. Always establish positive communication (verbal and/or visual contact) with operator before approaching within 20 metres. Communicate with the Loader operator via UHF Channel 38.



# Traffic and Pedestrian Management Plan

## Admix Bulk Tanker Site Map

(Driver must contact office on UHF channel 38 prior to entering site)



### Pedestrians

#### Protected Walkway

#### Designated Walkway

Pedestrians **MUST** give way to vehicles and plant

#### Pedestrian Exclusion Zone

Only authorised pedestrians are permitted to conduct work in operational areas



**Warning:** When light is flashing, all vehicles in the immediate area **MUST** stop and give way to Agitators.

### Vehicles and Plant



#### Vehicle Route

Follow the direction of the vehicle route. Drivers **MUST** not exit their vehicle unless they can access a designated walkway or to complete designated work.



#### Tanker Waiting Area

During normal operating hours, driver must park vehicle in waiting area and approach office for instructions prior to discharging. Follow the pathway directional arrows to and from the office, as indicated on the map.



#### Admix Bulk Tanker Discharge Location



#### Site Speed Limit

The site speed limit is restricted to 10kph.



#### Front End Loader (FEL) and Forklift

- Operate in all areas.
- Have right of way in vehicle operating areas. Always establish positive communication (verbal and/or visual contact) with operator before approaching within 20 metres. Communicate with the Loader operator via UHF Channel 38.





# Traffic and Pedestrian Management Plan

## Agitator Site Map



### Pedestrians

-  **Protected Walkway**
-  **Designated Walkway**  
Pedestrians **MUST** give way to vehicles and plant
-  **Pedestrian Exclusion Zone**  
Only authorised pedestrians are permitted to conduct work in operational areas



**Warning:** When light is flashing, all vehicles in the immediate area **MUST** stop and give way to Agitators.

### Vehicles and Plant



#### Vehicle Route

Follow the direction of the vehicle route. Drivers **MUST** not exit their vehicle unless they can access a designated walkway or to complete designated work.



#### Reverse Entry



**Agitator Loading Point – Dual Alley (forward entry)**

**Returned Concrete Unloading Point, Additive Loading Point**

To access the office, follow the pathway directional arrows as indicated on the map.



**Slump Stands – forward entry**



**Washout Bays – Reverse entry**



#### Site Speed Limit

The site speed limit is restricted to 10kph.

#### Front End Loader (FEL) and Forklift

- Operate in all areas.
- Have right of way in vehicle operating areas. Always establish positive communication (verbal and/or visual contact) with operator before approaching within 20 metres. Communicate with the Loader operator via UHF Channel 38.



# Traffic and Pedestrian Management Plan

## Loading Washout Waste Site Map

(Driver must contact office on UHF channel 38 prior to entering site)



### Pedestrians

**Protected Walkway**

**Designated Walkway**  
Pedestrians **MUST** give way to vehicles and plant

**Pedestrian Exclusion Zone**  
Only authorised pedestrians are permitted to conduct work in operational areas



**Warning:** When light is flashing, all vehicles in the immediate area **MUST** stop and give way to Agitators.

### Vehicles and Plant



#### Vehicle Route

Follow the direction of the vehicle route. Drivers **MUST** not exit their vehicle unless they can access a designated walkway or to complete designated work.

#### Reverse Entry

**Alternative Exit Route** - To be used only when the primary exit route is blocked



#### Waiting Area

Prior to loading, driver must park vehicle in waiting area and approach office for instructions. Follow the pathway directional arrows to and from the office, as indicated on the map.



#### Washout Waste Loading Location (reverse entry)

Drivers must load from Bay 1 only



#### Site Speed Limit

The site speed limit is restricted to 10kph.



#### Front End Loader (FEL) and Forklift

- Operate in all areas.
- Have right of way in vehicle operating areas. Always establish positive communication (verbal and/or visual contact) with operator before approaching within 20 metres. Communicate with the Loader operator via UHF Channel 38.






# Traffic & Pedestrian Management Plan


## Loading Hard Waste Site Map

(Driver must contact office on UHF channel 38 prior to entering site)









### Pedestrians

-  **Protected Walkway**
-  **Designated Walkway**  
Pedestrians **MUST** give way to vehicles and plant
-  **Pedestrian Exclusion Zone**  
Only authorised pedestrians are permitted to conduct work in operational areas

 **Warning:** When light is flashing, all vehicles in the immediate area **MUST** stop and give way to Agitators.

### Vehicles and Plant

-  **Vehicle Route**  
Follow the direction of the vehicle route. Drivers **MUST** not exit their vehicle unless they can access a designated walkway or to complete designated work.
-  **Alternative Exit Route** - To be used only when the primary exit route is blocked
-  **Waiting Area**  
Prior to loading, driver must park vehicle in waiting area and approach office for instructions. Follow the pathway directional arrows to and from the office, as indicated on the map.
-  **Hard Waste Loading Location**
-  **Site Speed Limit**  
The site speed limit is restricted to 10kph.
-  **Front End Loader (FEL) and Forklift**
  - Operate in all areas.
  - Have right of way in vehicle operating areas. Always establish positive communication (verbal and/or visual contact) with operator before approaching within 20 metres. Communicate with the Loader operator via UHF Channel 38.