

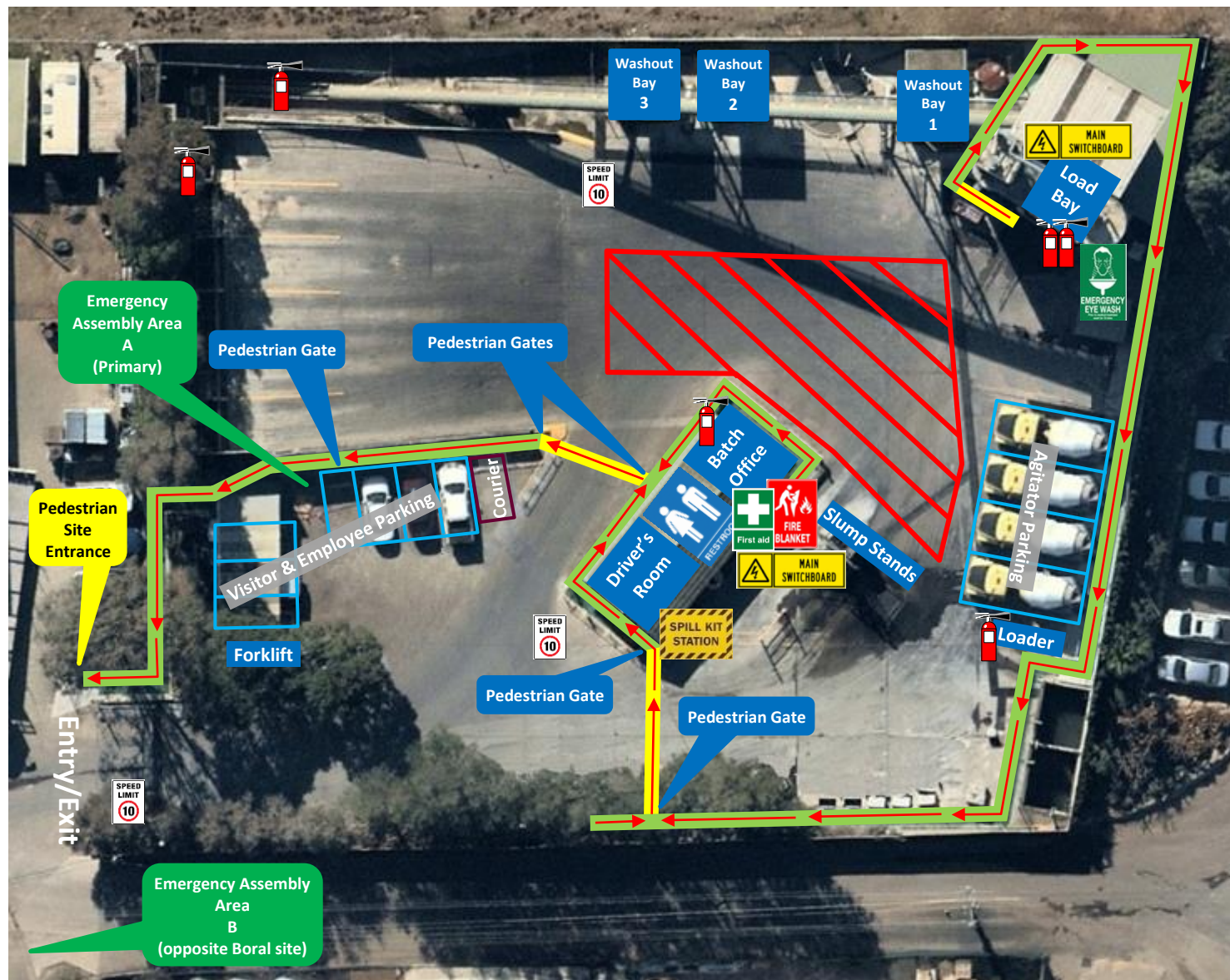


Windsor Concrete Plant

Traffic & Pedestrian Management Plan

Emergency Site Map

Boral Concrete - 5 Speedwell Place, Windsor



Pedestrians

- Protected Walkway**
- Designated Walkway**
Pedestrians **MUST** give way to vehicles and plant
- Pedestrian Exclusion Zone**
Only authorised pedestrians are permitted to conduct work in operational areas

Emergency Equipment



Fire Blanket
Located in Batch Office



Spill Kit
Located directly behind Driver's Room



First Aid
Located in Batch Office



Main Electrical
Batch Office, 2 located in Loading Bay



Emergency Eye Wash
Located at entrance to Loading Bay



Emergency Assembly Areas

Point A is the primary Assembly area and is located in the Visitor & Employee car park
Point B is located directly across Speedwell Place (opposite the Boral site)



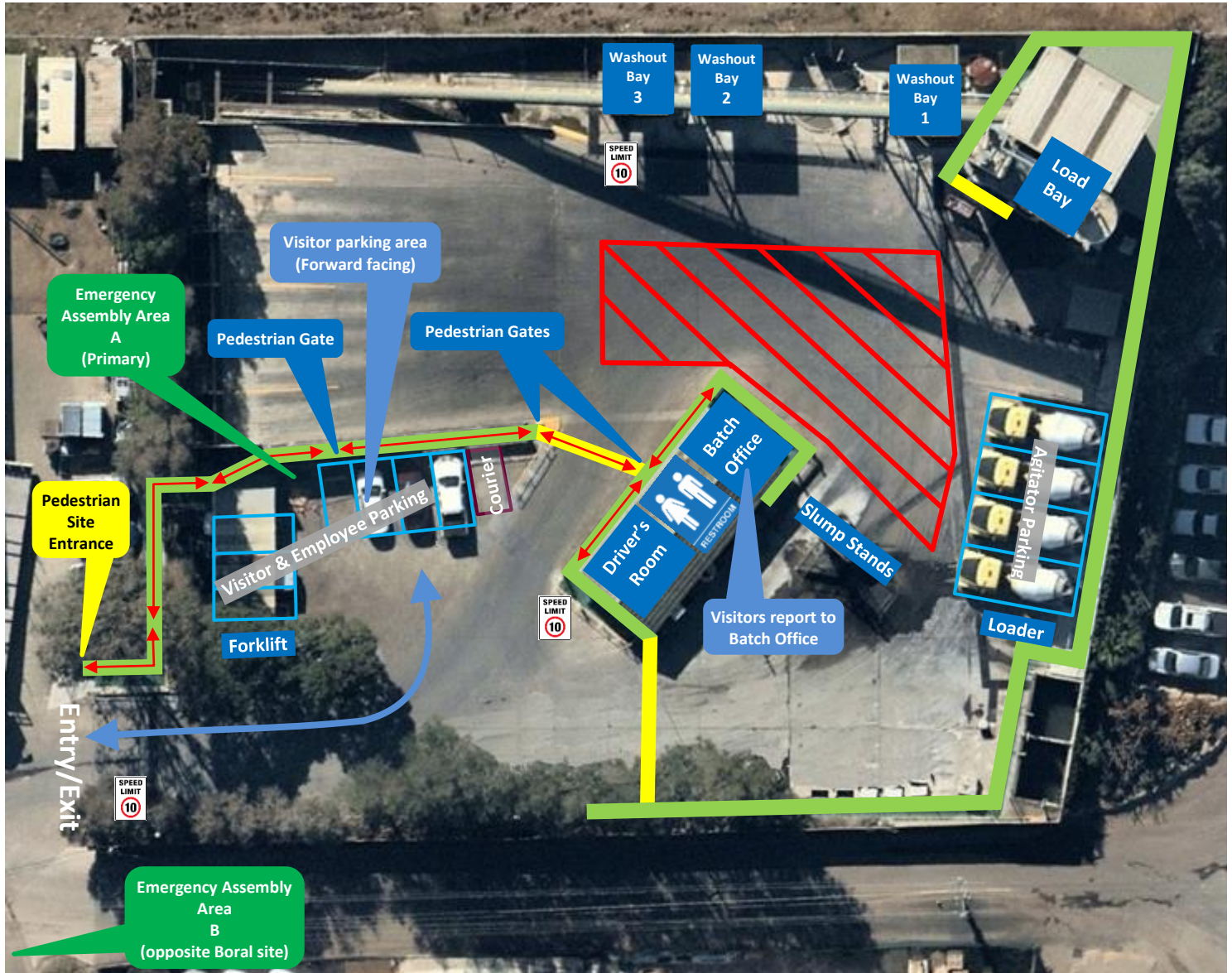
Fire Extinguishers

Located in the following areas:




Batch Office, Conveyor Tunnel (at lower end), Loading Bay - Ground floor, Loading Bay - Level 1, Overhead Bins, Front End Loader, all trucks are equipped with fire extinguishers.

Traffic & Pedestrian Management Plan

Visitor Site Map



Pedestrians

-  **Protected Walkway**
-  **Designated Walkway**
Pedestrians **MUST** give way to vehicles and plant
-  **Pedestrian Exclusion Zone**
Only authorised pedestrians are permitted to conduct work in operational areas

Vehicles and Plant



Vehicle Route

Follow the direction of the vehicle route. Drivers **MUST** not exit their vehicle unless they can access a designated walkway or to complete designated work.



Site Speed Limit

The Site speed limit is restricted to 10kph.



Visitor Parking

- Visitors park in the Visitor & Employee parking area
- Parking is forward facing.
- Visitors must report to the Batch office immediately upon arrival. Follow the pathway directional arrows to and from the Batch office, as indicated on the map.



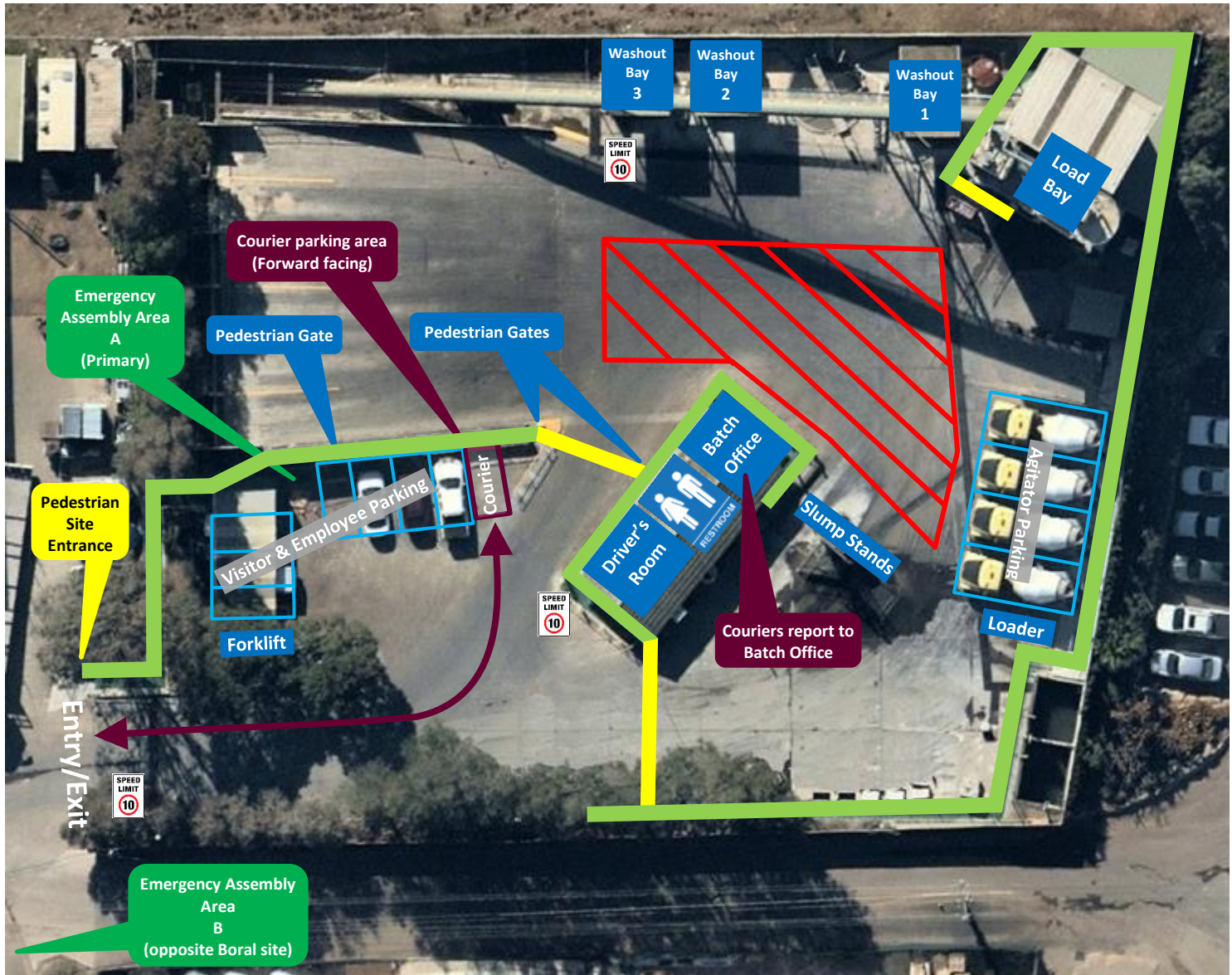
Front End Loader (FEL) and Forklift

- Operate in all areas.
- Have right of way in vehicle operating areas. Always establish positive communication (verbal and/or visual contact) with operator before approaching within 20 metres. Communicate with the Loader operator via UHF Channel 14.




Traffic & Pedestrian Management Plan

Courier Delivery Site Map





(Light Vehicle)



Pedestrians

-  **Protected Walkway**
-  **Designated Walkway**
Pedestrians **MUST** give way to vehicles and plant
-  **Pedestrian Exclusion Zone**
Only authorised pedestrians are permitted to conduct work in operational areas

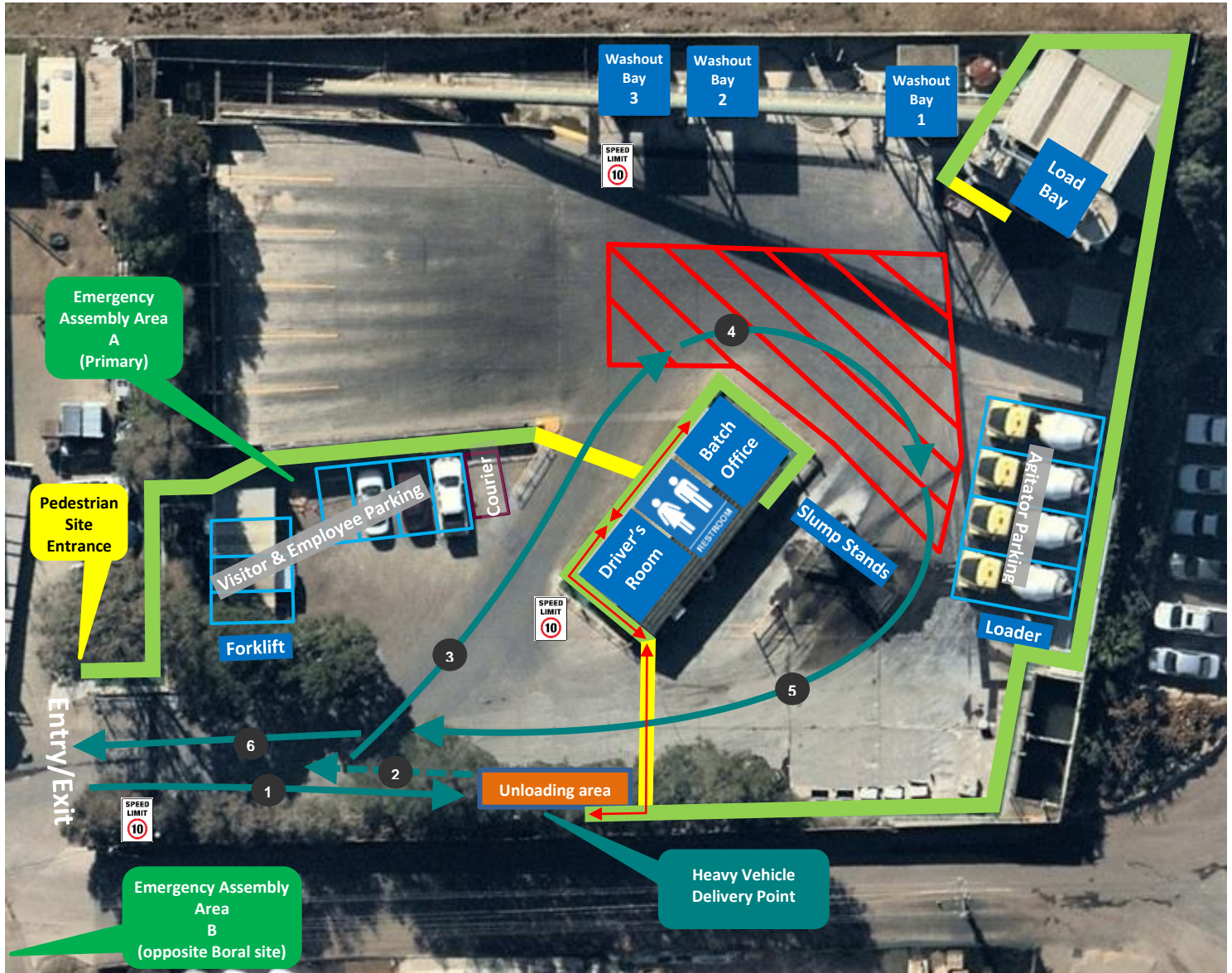
Vehicles and Plant

-  **Vehicle Route**
Follow the direction of the vehicle route. Drivers **MUST** not exit their vehicle unless they can access a designated walkway or to complete designated work.
-  **Site Speed Limit**
The Site speed limit is restricted to 10kph.
-  **Courier Parking**
 - There is 1 parking bay allocated to Couriers
 - Parking is forward facing.
 - Couriers must report to the Batch office immediately upon arrival. Follow the pathway directional arrows to and from the Batch office, as indicated on the map
-  **Front End Loader (FEL) and Forklift**
 - Operate in all areas.
 - Have right of way in vehicle operating areas. Always establish positive communication (verbal and/or visual contact) with operator before approaching within 20 metres. Communicate with the Loader operator via UHF Channel 14.




Traffic & Pedestrian Management Plan

Heavy Vehicle Delivery Site Map

(Requiring Forklift)



Pedestrians

-  **Protected Walkway**
-  **Designated Walkway**
Pedestrians **MUST** give way to vehicles and plant
-  **Pedestrian Exclusion Zone**
Only authorised pedestrians are permitted to conduct work in operational areas

Vehicles and Plant



Vehicle Route

1. Forward entry onto the site, drive forward and park in the Unloading area.
2. Once unloaded, reverse back slightly towards the entry/exit gate.
- 3 - 6 To exit the site, follow the directional arrows on the map marked 3 to 6.

Follow the direction of the vehicle route. Drivers **MUST** not exit their vehicle unless they can access a designated walkway or to complete designated work.



Reverse Entry



Site Speed Limit

The Site speed limit is restricted to 10kph.



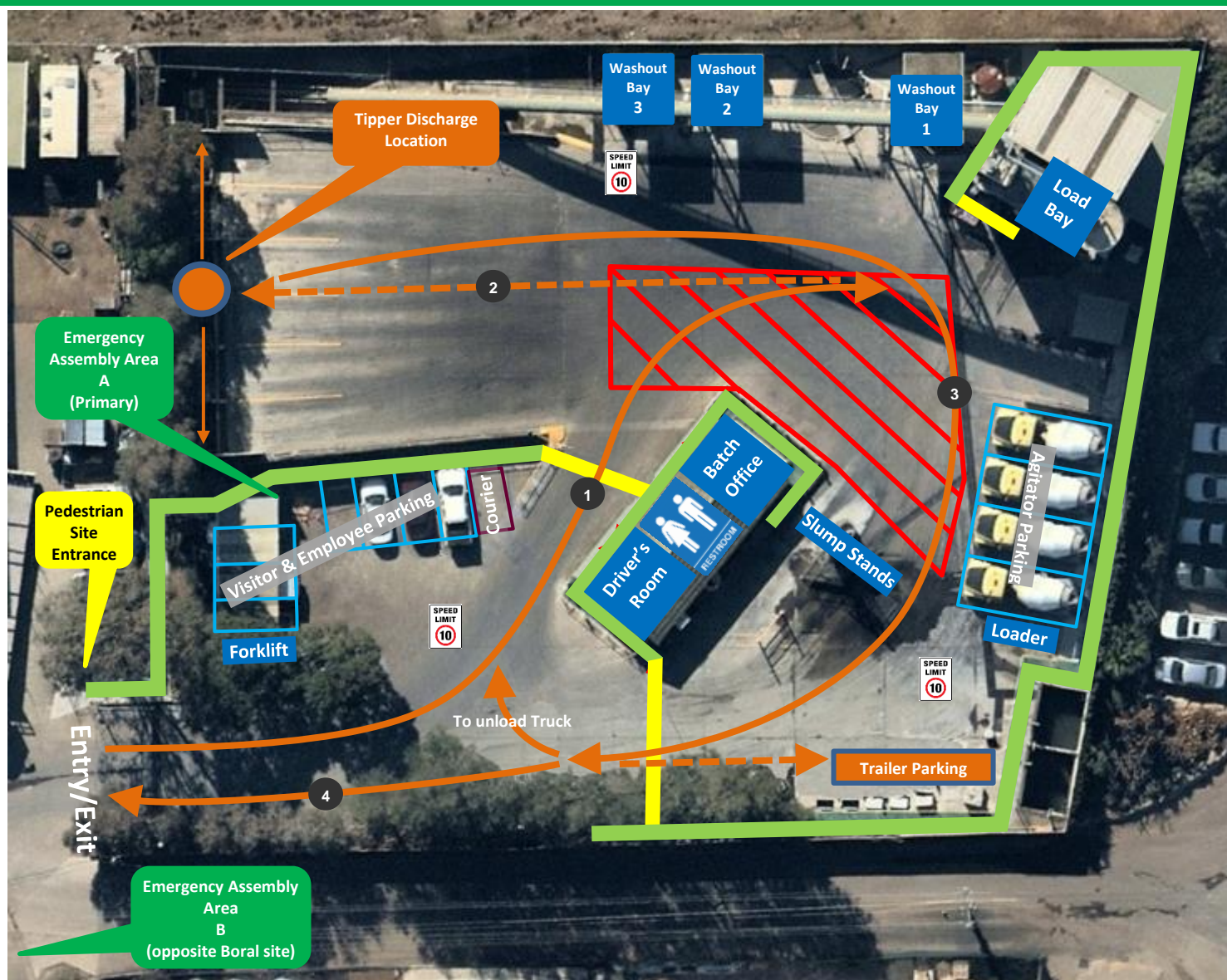
Heavy Vehicle Delivery Point

To access the office, follow the pathway directional arrows as indicated on the map.






Front End Loader (FEL) and Forklift

- Operate in all areas.
- Have right of way in vehicle operating areas. Always establish positive communication (verbal and/or visual contact) with operator before approaching within 20 metres. Communicate with the Loader operator via UHF Channel 14.



Pedestrians

-  **Protected Walkway**
-  **Designated Walkway**
Pedestrians **MUST** give way to vehicles and plant
-  **Pedestrian Exclusion Zone**
Only authorised pedestrians are permitted to conduct work in operational areas

Vehicles and Plant



Vehicle Route for Truck only

Follow the direction of the vehicle route, steps 1 - 4.

Vehicle Route for Truck and Trailer

- To unload Trailer, follow the direction of the vehicle route, steps 1 – 3.
- Once Trailer has been unloaded, reverse to the Trailer Parking area and unhook the trailer.
- Repeat steps 1 & 2 to unload truck.
- Once discharge is complete, continue to the Trailer Parking area and hook-up the trailer.
- Follow step 4 to exit the site.

Drivers **MUST** not exit their vehicle unless they can access a designated walkway or to complete designated work.



Reverse Entry



Site Speed Limit

The Site speed limit is restricted to 10kph.



Tipper Discharge Location



Trailer Parking area

To access the office, follow the pathway directional arrows as indicated on the map.



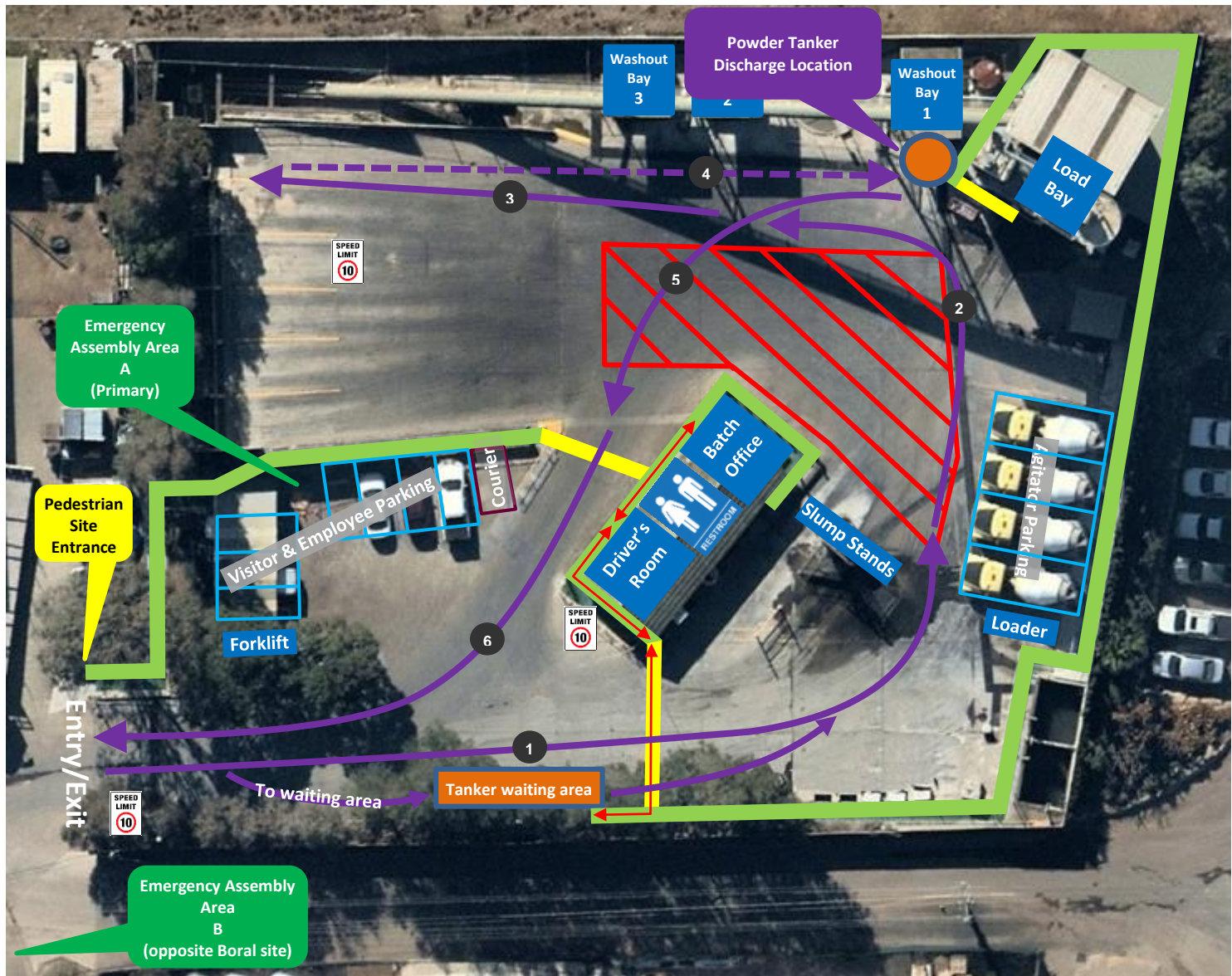
Front End Loader (FEL) and Forklift

- Operate in all areas.
- Have right of way in vehicle operating areas. Always establish positive communication (verbal and/or visual contact) with operator before approaching within 20 metres. Communicate with the Loader operator via UHF Channel 14.




Traffic & Pedestrian Management Plan

Powder Tanker Site Map







(Driver must contact office on UHF channel 14 prior to entering site)



Pedestrians

-  **Protected Walkway**
-  **Designated Walkway**
Pedestrians **MUST** give way to vehicles and plant
-  **Pedestrian Exclusion Zone**
Only authorised pedestrians are permitted to conduct work in operational areas

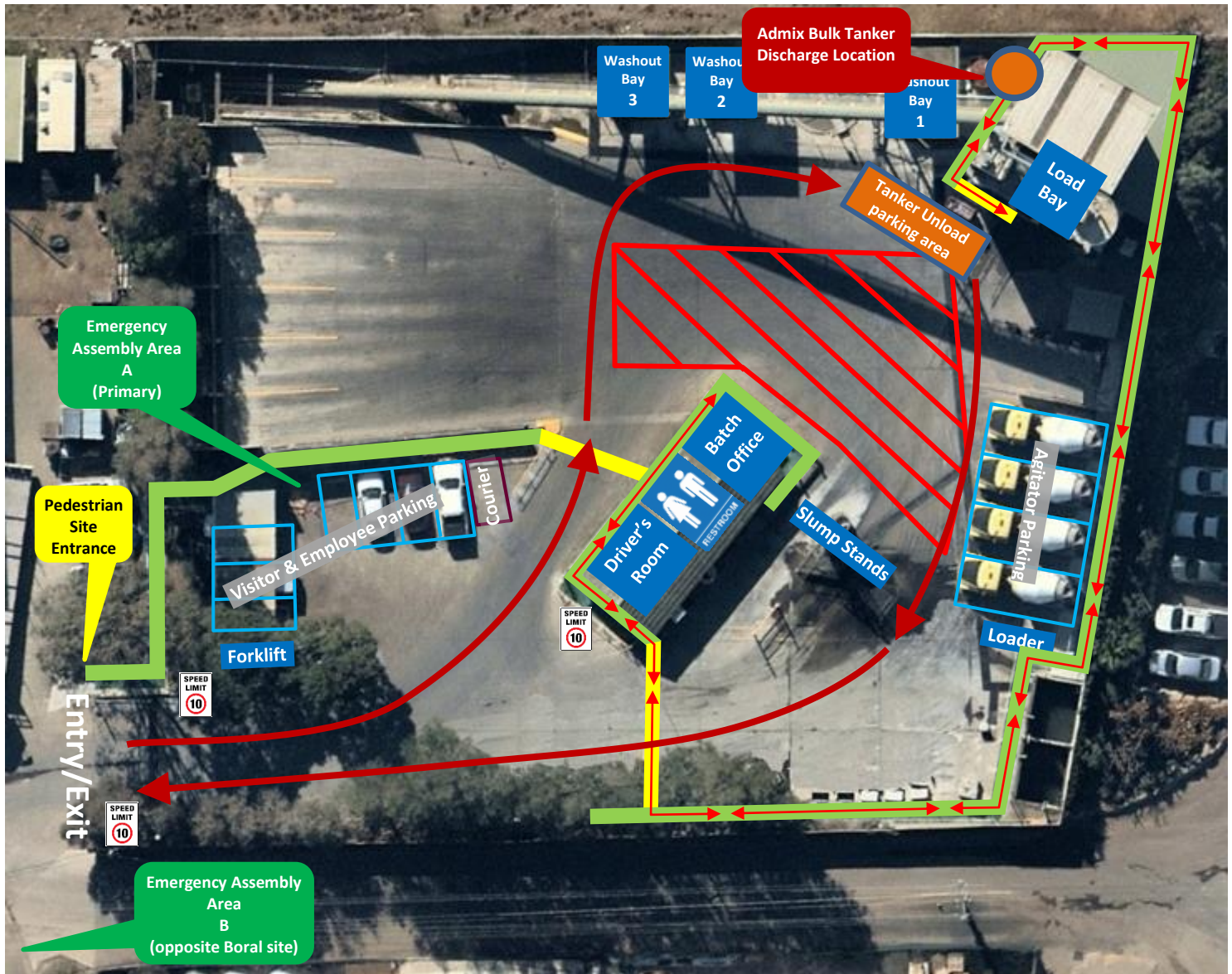
Vehicles and Plant

-  **Vehicle Route**
Follow the direction of the vehicle route, steps 1 - 6.
Drivers **MUST** not exit their vehicle unless they can access a designated walkway or to complete designated work.
-  **Reverse Entry**
-  **Site Speed Limit**
The Site speed limit is restricted to 10kph.
-  **Powder Tanker Discharge Location**
Reverse entry.
-  **Tanker Waiting Area**
When the discharge point is unavailable, park in the Tanker Waiting area.
To access the office, follow the pathway directional arrows as indicated on the map.
-  **Front End Loader (FEL) and Forklift**
 - Operate in all areas.
 - Have right of way in vehicle operating areas. Always establish positive communication (verbal and/or visual contact) with operator before approaching within 20 metres. Communicate with the Loader operator on UHF Channel 14.

Traffic & Pedestrian Management Plan

Admix Bulk Tanker Site Map

(Driver must contact office on UHF channel 14 prior to entering site)



Pedestrians

- Protected Walkway**
- Designated Walkway**
Pedestrians **MUST** give way to vehicles and plant
- Pedestrian Exclusion Zone**
Only authorised pedestrians are permitted to conduct work in operational areas

Vehicles and Plant



Vehicle Route

Follow the direction of the vehicle route. Drivers **MUST** not exit their vehicle unless they can access a designated walkway or to complete designated work.

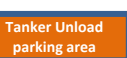


Site Speed Limit

The Site speed limit is restricted to 10kph.



Admix Bulk Tanker Discharge Location



Tanker Unload Parking area

Driver must park in Unloading area while discharging.
To access the office, follow the pathway directional arrows as indicated on the map.



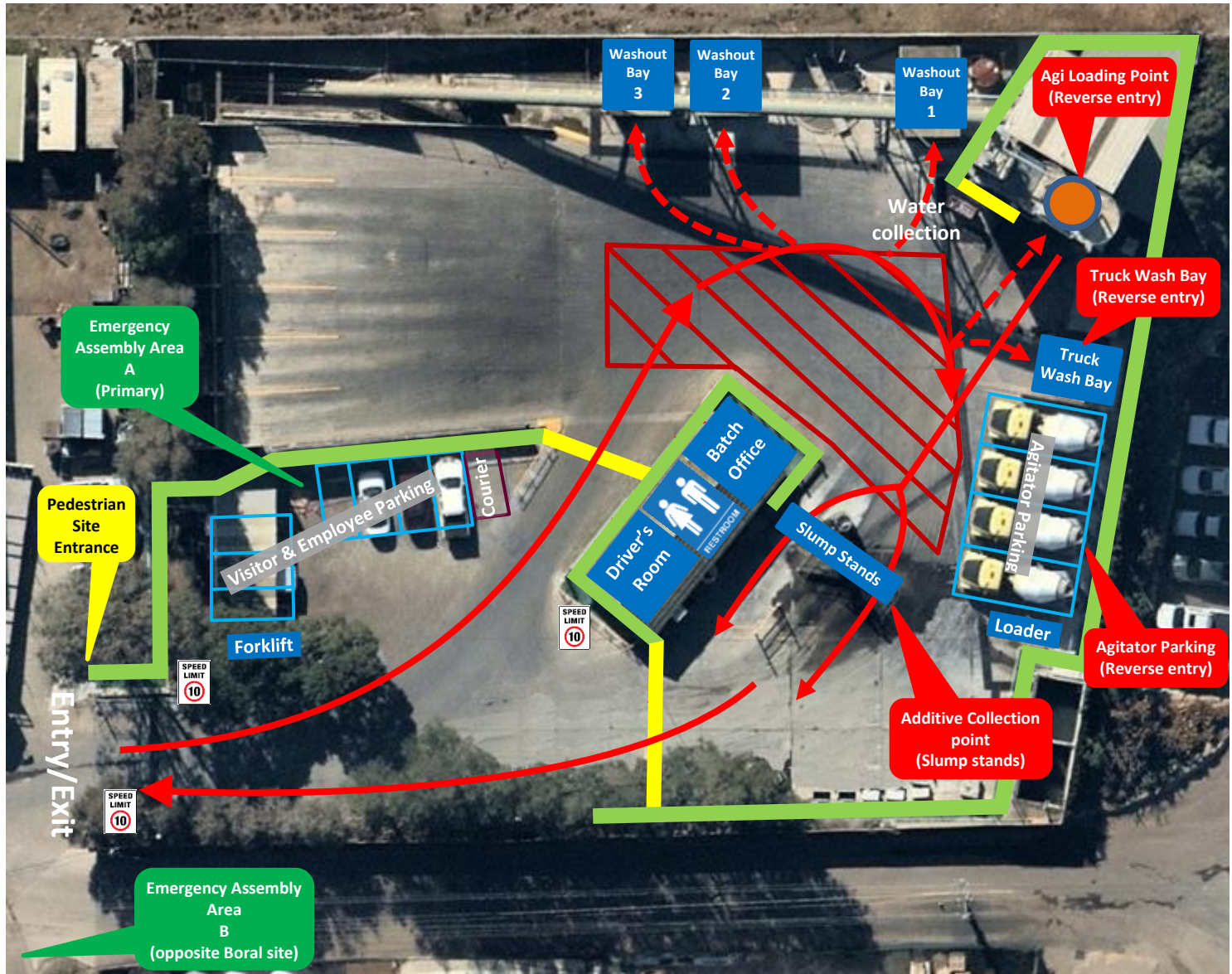
Front End Loader (FEL) and Forklift

- Operate in all areas.
- Have right of way in vehicle operating areas. Always establish positive communication (verbal and/or visual contact) with operator before approaching within 20 metres. Communicate with the Loader operator on UHF Channel 14.




Traffic & Pedestrian Management Plan

Agitator Site Map








(Driver must communicate on UHF channel 4)



Pedestrians

-  **Protected Walkway**
-  **Designated Walkway**
Pedestrians **MUST** give way to vehicles and plant
-  **Pedestrian Exclusion Zone**
Only authorised pedestrians are permitted to conduct work in operational areas

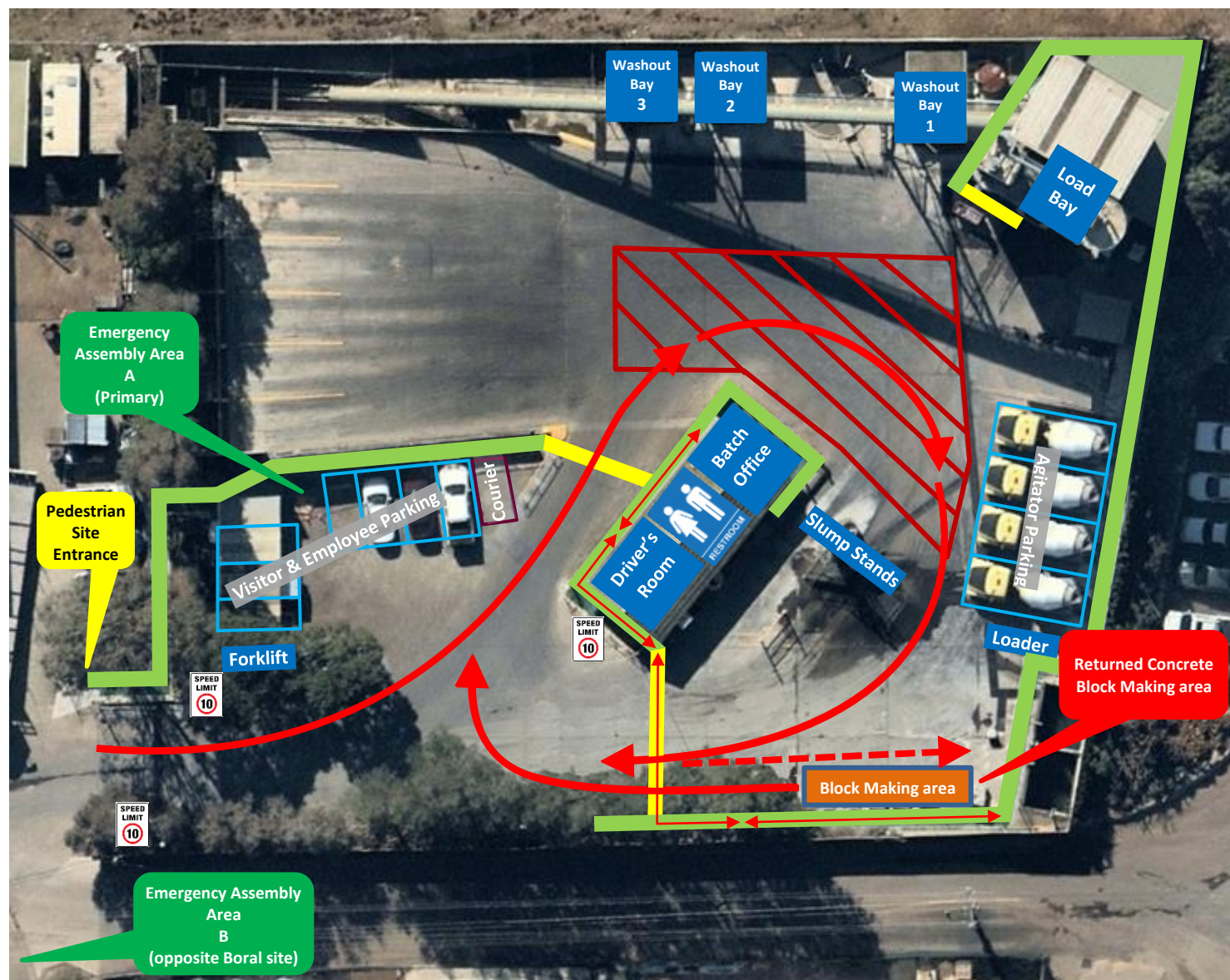
Vehicles and Plant

-  **Vehicle Route**
Follow the direction of the vehicle route. Drivers **MUST** not exit their vehicle unless they can access a designated walkway or to complete designated work.
-  **Reverse Entry**
Reverse entry into the Loading Bay, Washout Bays and Truck Wash Bay.
-  **Site Speed Limit**
The Site speed limit is restricted to 10kph.
-  **Agitator Loading Point**
Note: If additives are required, proceed directly to the Slump stands. Once the loading of additives is complete, continue to drive forward and around to the Loading point.
-  **Wash Out Bays**
Bay 1 (Water collection) – Water is only available from Bay 1.
Bays 2 & 3 – Contact the Plant Supervisor for instructions on which Washout Bay you proceed to.
-  **Agitator Parking Bays**
Parking is rear facing.
-  **Front End Loader (FEL) and Forklift**
 - Operate in all areas.
 - Have right of way in vehicle operating areas. Always establish positive communication (verbal and/or visual contact) with operator before approaching within 20 metres. Communicate with the Loader operator on UHF Channel 14.

Traffic & Pedestrian Management Plan

Agitator Site Map – Returned Concrete







(Driver must communicate on UHF channel 4)



Pedestrians

-  **Protected Walkway**
-  **Designated Walkway**
Pedestrians **MUST** give way to vehicles and plant
-  **Pedestrian Exclusion Zone**
Only authorised pedestrians are permitted to conduct work in operational areas

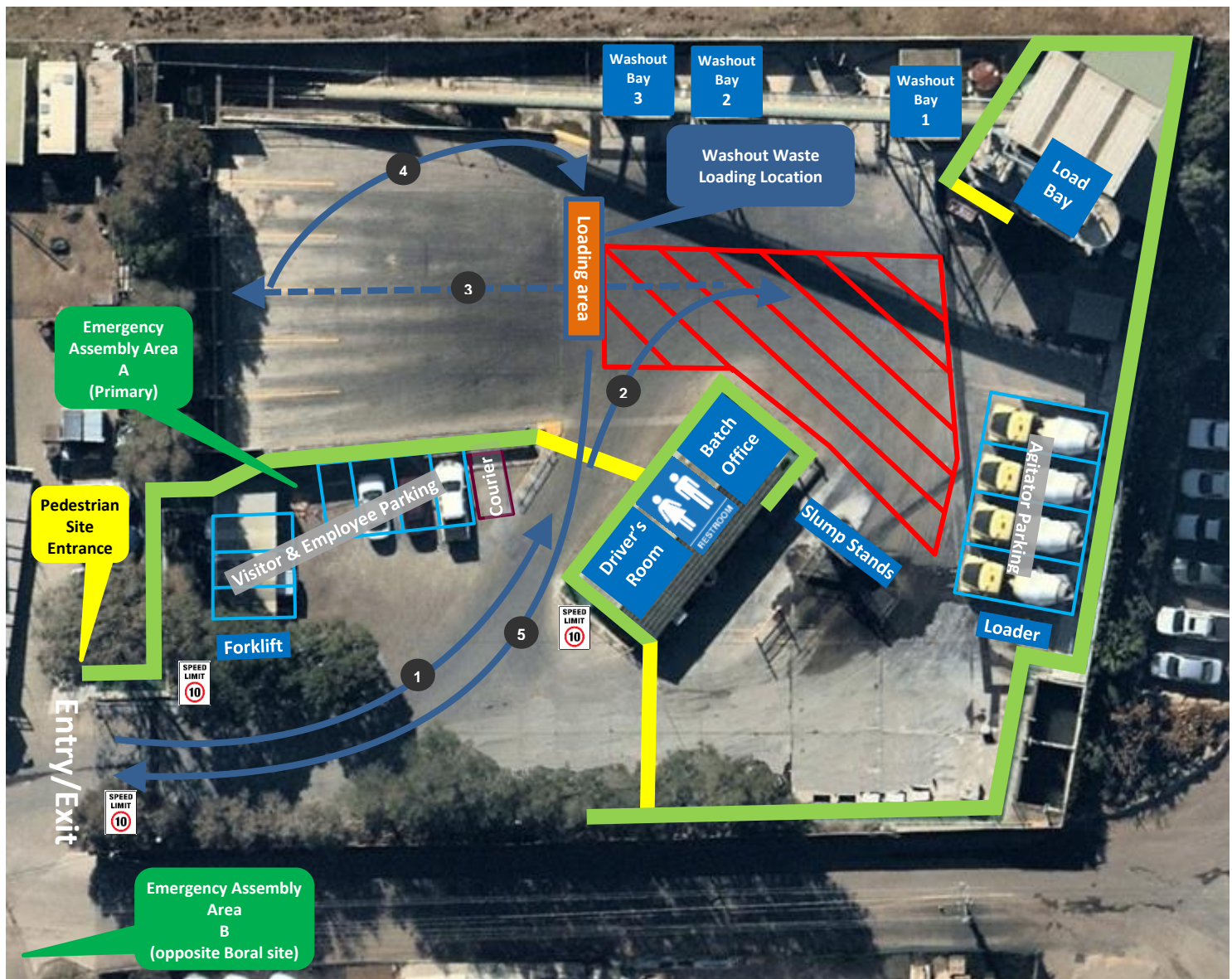
Vehicles and Plant

-  **Vehicle Route**
Follow the direction of the vehicle route. Drivers **MUST** not exit their vehicle unless they can access a designated walkway or to complete designated work.
-  **Reverse Entry**
Reverse to the far end of the Block making area.
-  **Site Speed Limit**
The Site speed limit is restricted to 10kph.
-  **Returned Concrete Block Making Area**
Proceed to the Block Making area where the returned concrete is poured directly into concrete block moulds. Drivers must wait here for assistance. Once the unloading is complete, continue to the Loading point or Agitator parking area (refer to previous map).
-  **Agitator Parking Bays**
Parking is rear facing.
-  **Front End Loader (FEL) and Forklift**
 - Operate in all areas.
 - Have right of way in vehicle operating areas. Always establish positive communication (verbal and/or visual contact) with operator before approaching within 20 metres. Communicate with the Loader operator on UHF Channel 14.




Traffic & Pedestrian Management Plan

Loading Washout Waste Site Map






(Driver must contact office on UHF channel 14 prior to entering site)



Pedestrians

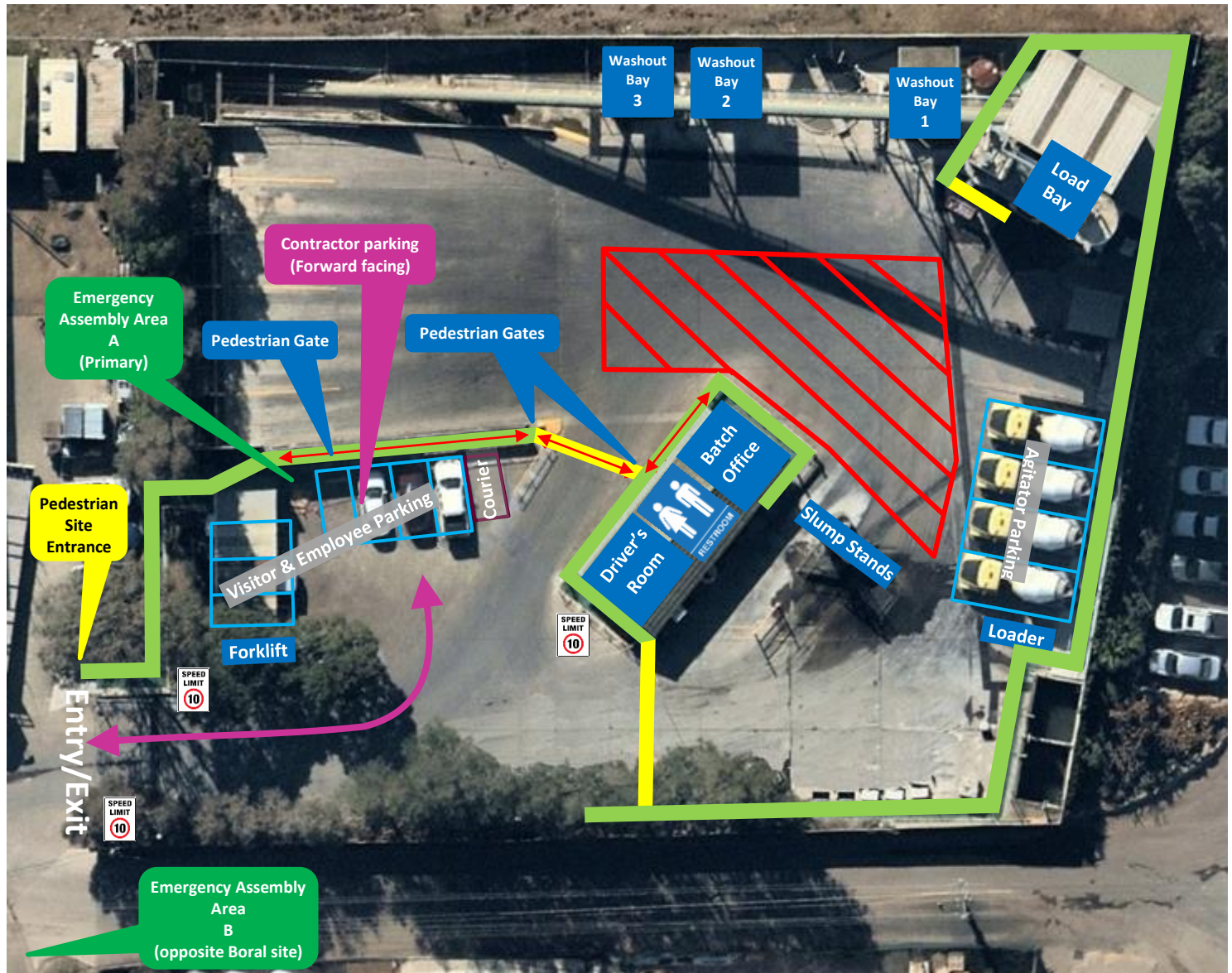
-  **Protected Walkway**
-  **Designated Walkway**
Pedestrians **MUST** give way to vehicles and plant
-  **Pedestrian Exclusion Zone**
Only authorised pedestrians are permitted to conduct work in operational areas

Vehicles and Plant




-  **Vehicle Route**
Follow the direction of the vehicle route, steps 1 - 5.
Drivers **MUST** not exit their vehicle unless they can access a designated walkway or to complete designated work.
-  **Reverse Entry**
-  **Site Speed Limit**
The Site speed limit is restricted to 10kph.
-  **Washout Waste Loading Location**
-  **Front End Loader (FEL) and Forklift**
 - Operate in all areas.
 - Have right of way in vehicle operating areas. Always establish positive communication (verbal and/or visual contact) with operator before approaching within 20 metres. Communicate with the Loader operator on UHF Channel 14.

Traffic & Pedestrian Management Plan

Contractor Site Map



Pedestrians

-  **Protected Walkway**
-  **Designated Walkway**
Pedestrians **MUST** give way to vehicles and plant
-  **Pedestrian Exclusion Zone**
Only authorised pedestrians are permitted to conduct work in operational areas

Vehicles and Plant



Vehicle Route

Follow the direction of the vehicle route. Drivers **MUST** not exit their vehicle unless they can access a designated walkway or to complete designated work.



Site Speed Limit

The Site speed limit is restricted to 10kph.



Contractor Parking

- Contractors park in the Visitor & Employee parking area.
- Parking is forward facing.
- Upon arrival, Contractors report to the office for induction and further instructions. Follow the pathway directional arrows to and from office, as indicated on the map.



Front End Loader (FEL) and Forklift

- Operate in all areas.
- Have right of way in vehicle operating areas. Always establish positive communication (verbal and/or visual contact) with operator before approaching within 20 metres. Communicate with the Loader operator on UHF Channel 14.