

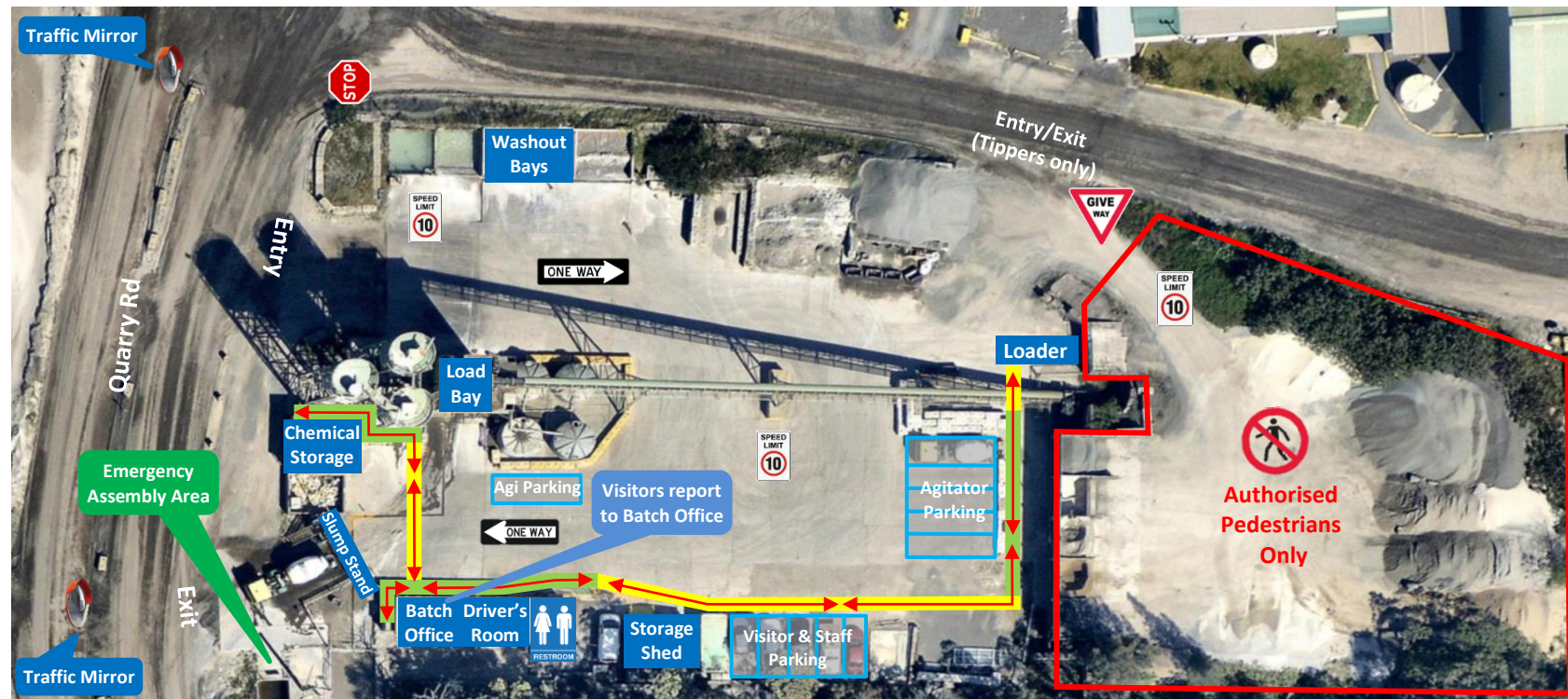


Dunmore Concrete Plant




Traffic & Pedestrian Management Plan

Pedestrian Upgrade Site Map

Boral Concrete – 38 Tabbita Rd, Dunmore



Pedestrians

-  **Protected Walkway**
-  **Designated Walkway**
Pedestrians **MUST** give way to vehicles and plant
-  **Pedestrian Exclusion Zone**
Only authorised pedestrians are permitted to conduct work in operational areas

Vehicles and Plant



Emergency Assembly Area

Located near the exit gate. Proceed to the assembly point using the designated walkways.



Light Vehicle Parking

- Visitors park in the Visitor & Staff parking area.
- Parking is reverse entry.
- Visitors must report to the Batch Office immediately upon arrival. Follow the pathway directional arrows to and from the Batch Office, as indicated on the map.



Site Speed Limit

The site speed limit is restricted to 10kph.



2-Way Communication

All radio communication on this site is via UHF Channel 30 and Boral radio channel 37.



Front End Loader (FEL)

- Operates in all areas.
- Has right of way in vehicle operating areas. Always establish positive communication (verbal and/or visual contact) with operator before approaching within 20 metres. Communicate with the Loader operator via UHF Channel 30.




Traffic & Pedestrian Management Plan

Emergency Site Map

Boral Concrete – 38 Tabbita Rd, Dunmore



Pedestrians

-  **Protected Walkway**
-  **Designated Walkway**
Pedestrians **MUST** give way to vehicles and plant
-  **Pedestrian Exclusion Zone**
Only authorised pedestrians are permitted to conduct work in operational areas

Emergency Equipment



First Aid
Located in Driver's Room



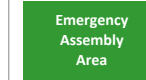
Emergency Eye Wash
Located in Amenities block



Spill Kit
Located in Storage Shed



Electrical Mains
Located in Batch Office & at the entrance to Dunmore Sand & Soil



Emergency Assembly Area
Located near the exit gate. Follow the pathway directional arrows as indicated on the map



Fire Extinguishers
Located in the following areas:
Front external wall of Office Block, Bottom of Conveyor, Silo Fill point, Loading Bay, 1st floor of Batch Tower, Top of Batch Tower, Front End Loader, all trucks are equipped with fire extinguishers