



# **Lismore Concrete Plant**

# Traffic & Pedestrian Management

## Pedestrian Upgrade Site Map

### Boral Concrete – 231 Lake Street, North Lismore



#### Pedestrians

##### Protected Walkway

**Designated Walkway**  
Pedestrians **MUST** give way to vehicles and plant

**Pedestrian Exclusion Zone**  
Only authorised pedestrians are permitted to conduct work in operational areas

#### Vehicles and Plant



##### Emergency Assembly Area

Located outside the entry/exit gate. Proceed to the assembly point using the designated walkways.

##### Light Vehicle Parking

- There are 3 parking spaces allocated to Visitors and Employees.
- Parking is forward facing
- All visitors must report to the Driver's Room immediately upon arrival. Follow the pathway directional arrows to and from the Driver's Room, as indicated on the map.



##### Site Speed Limit

The site speed limit is restricted to 5kph.



##### 2-Way Communication

All radio communication on this site is via UHF Channel 12 and Boral radio channel 27.



##### Front End Loader (FEL)

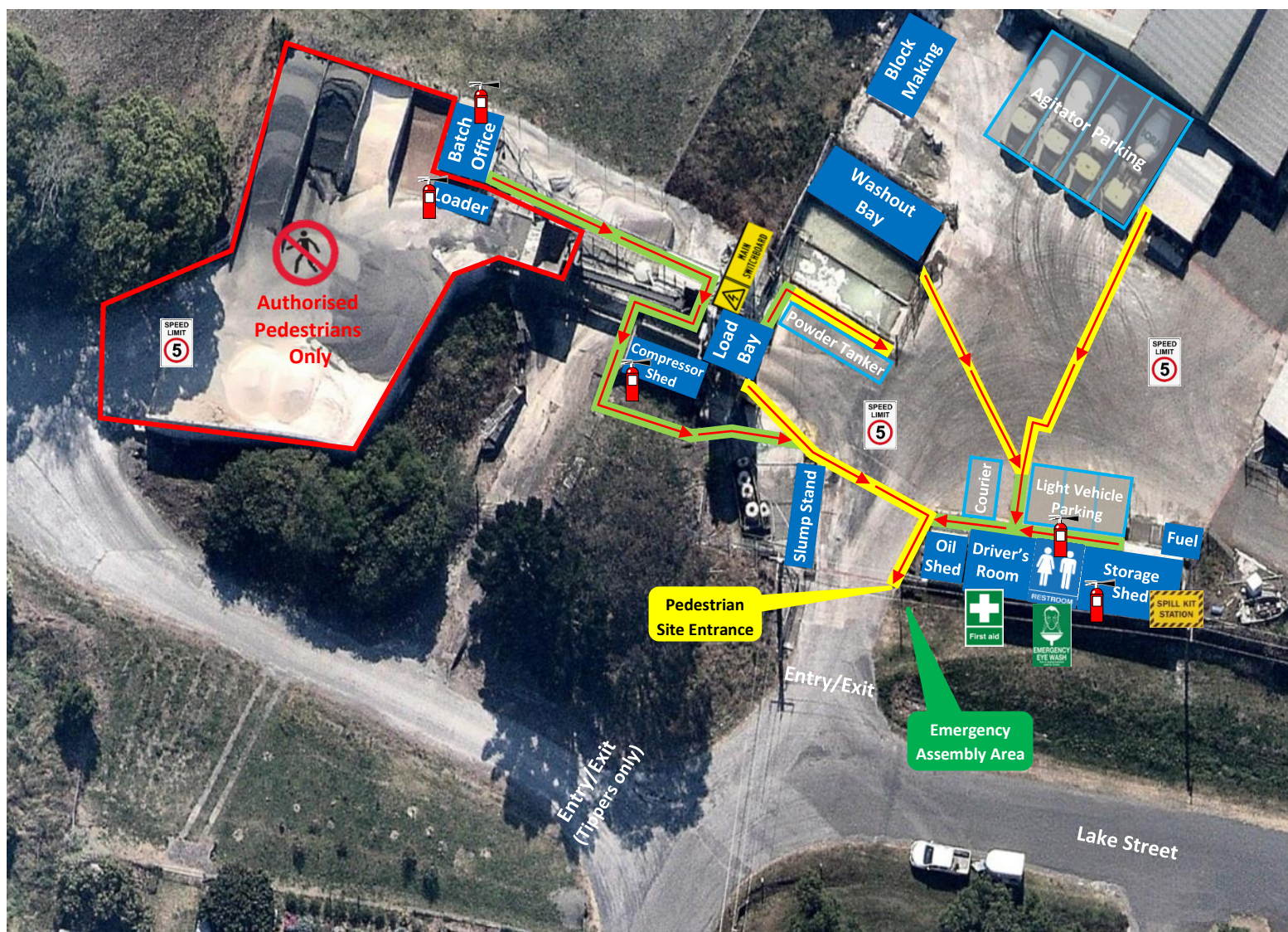
- Operates in all areas.
- Has right of way in vehicle operating areas. Always establish positive communication (verbal and/or visual contact) with operator before approaching within 20 metres. Communicate with the Loader operator via UHF Channel 12.






# Traffic & Pedestrian Management Plan

## Emergency Site Map

### Boral Concrete – 231 Lake Street, North Lismore



#### Pedestrians

-  **Protected Walkway**
-  **Designated Walkway**  
Pedestrians **MUST** give way to vehicles and plant
-  **Pedestrian Exclusion Zone**  
Only authorised pedestrians are permitted to conduct work in operational areas

#### Emergency Equipment



**First Aid**  
Located in Driver's Room



**Emergency Eye Wash**  
Located at entrance to amenities block



**Spill Kit**  
Located in Storage Shed



**Main Electrical**  
Located above Loading Bay



**Emergency Assembly Area**  
Located outside the entry/exit gate. Follow the pathway directional arrows as indicated on the map.



**Fire Extinguishers**  
Located in the following areas:  
Batch Office, Compressor Shed, Storage Shed, entrance to amenities block, Front End Loader, all trucks are equipped with fire extinguishers.