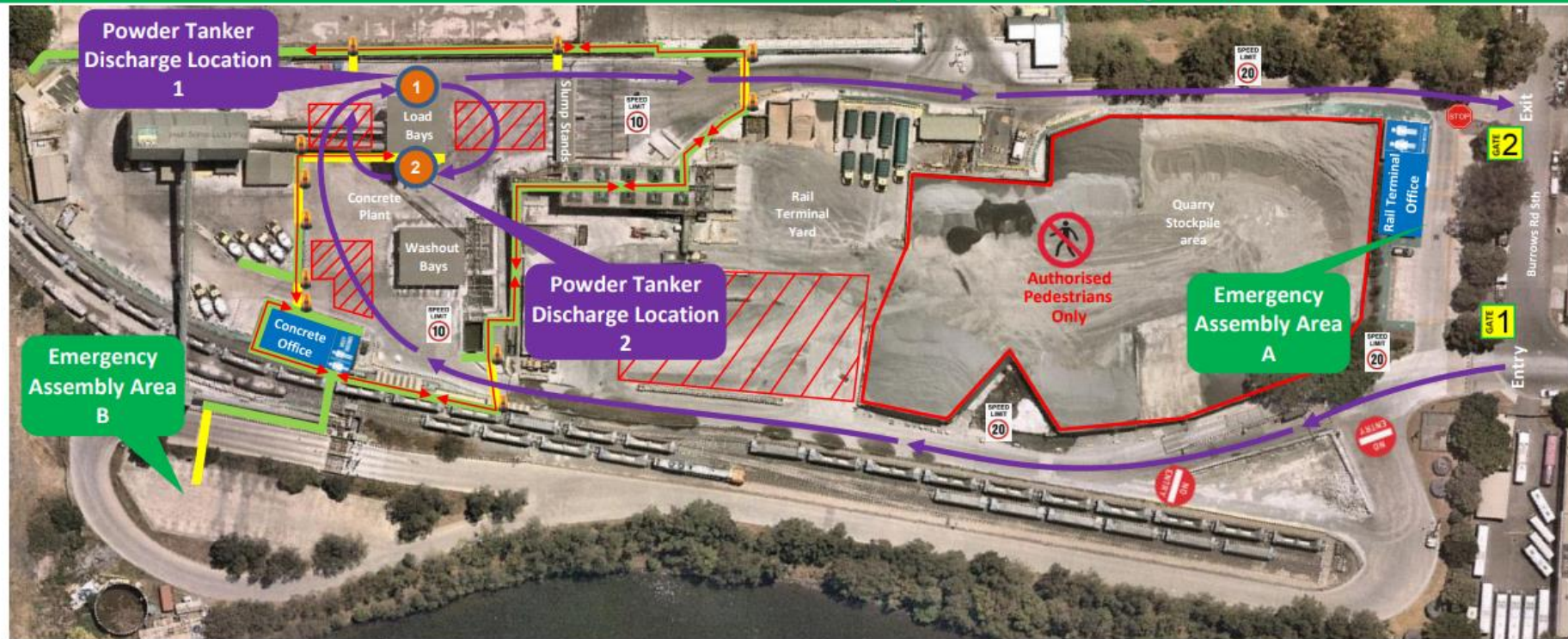




# Traffic & Pedestrian Management Powder Tanker Site Map



(Driver must contact Batch office on UHF channel 58 prior to entering site)



## Pedestrians

- Protected Walkway
- Designated Walkway  
Pedestrians **MUST** give way to vehicles and plant
- Pedestrian Exclusion Zone  
Only authorised pedestrians are permitted to conduct work in operational areas

## Vehicles and Plant



### Vehicle Route

Enter via gate 1, exit via gate 2.  
Follow the direction of the vehicle route. Drivers **MUST** not exit their vehicle unless they can access a designated walkway or to complete designated work.

### Powder Tanker Discharge Locations

Location 1 – ZEP SL & Fly Ash  
Location 2 – SL & Enviro

To access the Concrete office and Site facilities, follow the pathway directional arrows, as indicated on the map.

To warn drivers of nearby pedestrians, flashing lights will activate when pedestrians cross a vehicle route. **Warning:** When light is flashing, all vehicles in the immediate area **MUST** stop. Pedestrians only proceed across unprotected walkways when no traffic in area.

### Driving Rules

- 10 km/hr speed limit, unless otherwise marked.
- Obey road rules.
- Front End Loader and Forklift have right of way in vehicle operating areas. Always establish positive communication (verbal and/or visual contact) with operator before approaching within 20 metres. Communicate with the Loader operator via UHF channel 58.
- Drive to conditions.
- No hand-held mobile device whilst driving.

[http://bcm.onsite.boral.com.au/BCM/BMS/web%20pages/nswact\\_Concrete.aspx](http://bcm.onsite.boral.com.au/BCM/BMS/web%20pages/nswact_Concrete.aspx)  
uncontrolled copy when printed