

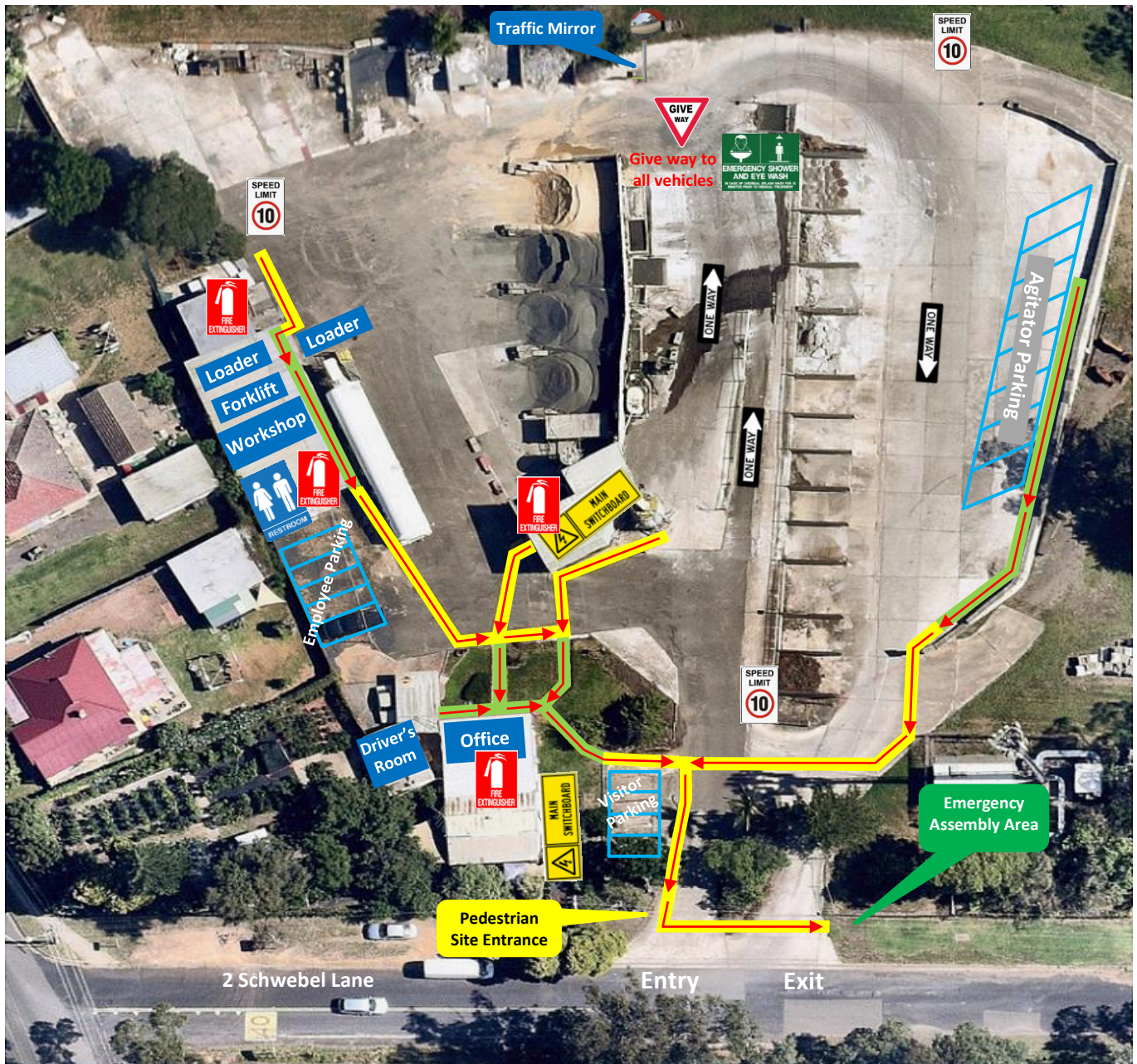


# **Glenorie Concrete Plant**

# Traffic & Pedestrian Management Plan

## Emergency Site Map

### Boral Concrete – 2 Schwebel Lane, Glenorie



#### Pedestrians

**Protected Walkway**

**Designated Walkway**  
Pedestrians **MUST** give way to vehicles and plant

**Pedestrian Exclusion Zone**  
Only authorised pedestrians are permitted to conduct work in operational areas

#### Emergency Equipment



**Emergency Shower & Eye Wash**  
Located opposite Washout Bays



**Spill Kit**  
Located on Office verandah



#### Fire Extinguishers

Are located in each of the following areas:  
Office (1), Driver's Room (1), at rear of Material Loading Bay (1), Workshop (2)



#### Emergency Assembly Area

Located at the Exit gate.  
Follow the pathway directional arrows, as indicated on the map.



**Main Electrical**  
Located in Loading Bay & external side wall of private house (rear of Office)

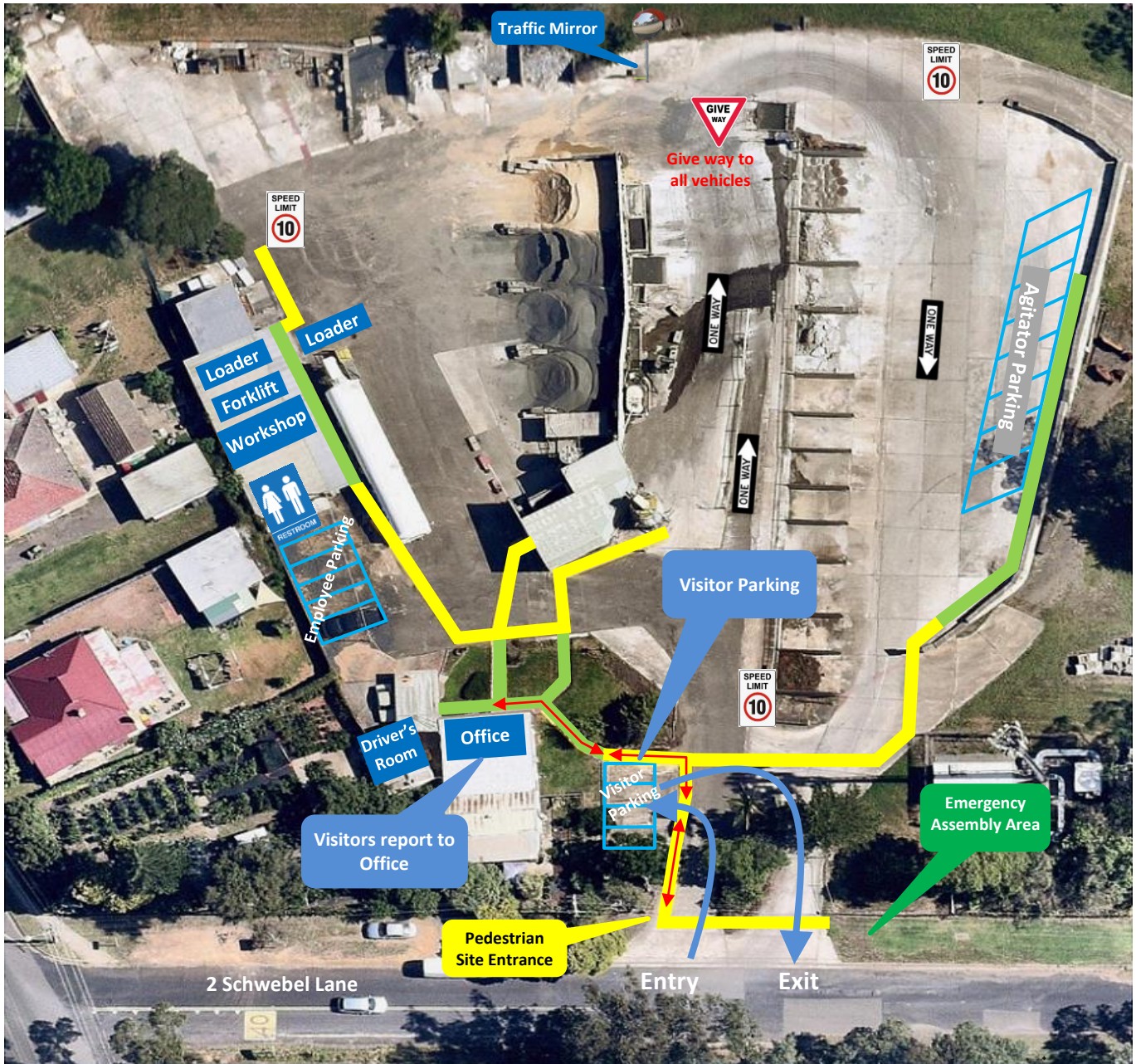


**First Aid**  
Located in Driver's Room






# Traffic & Pedestrian Management Plan





## Visitor Site Map



### Pedestrians

-  **Protected Walkway**
-  **Designated Walkway**  
Pedestrians **MUST** give way to vehicles and plant
-  **Pedestrian Exclusion Zone**  
Only authorised pedestrians are permitted to conduct work in operational areas

### Vehicles and Plant

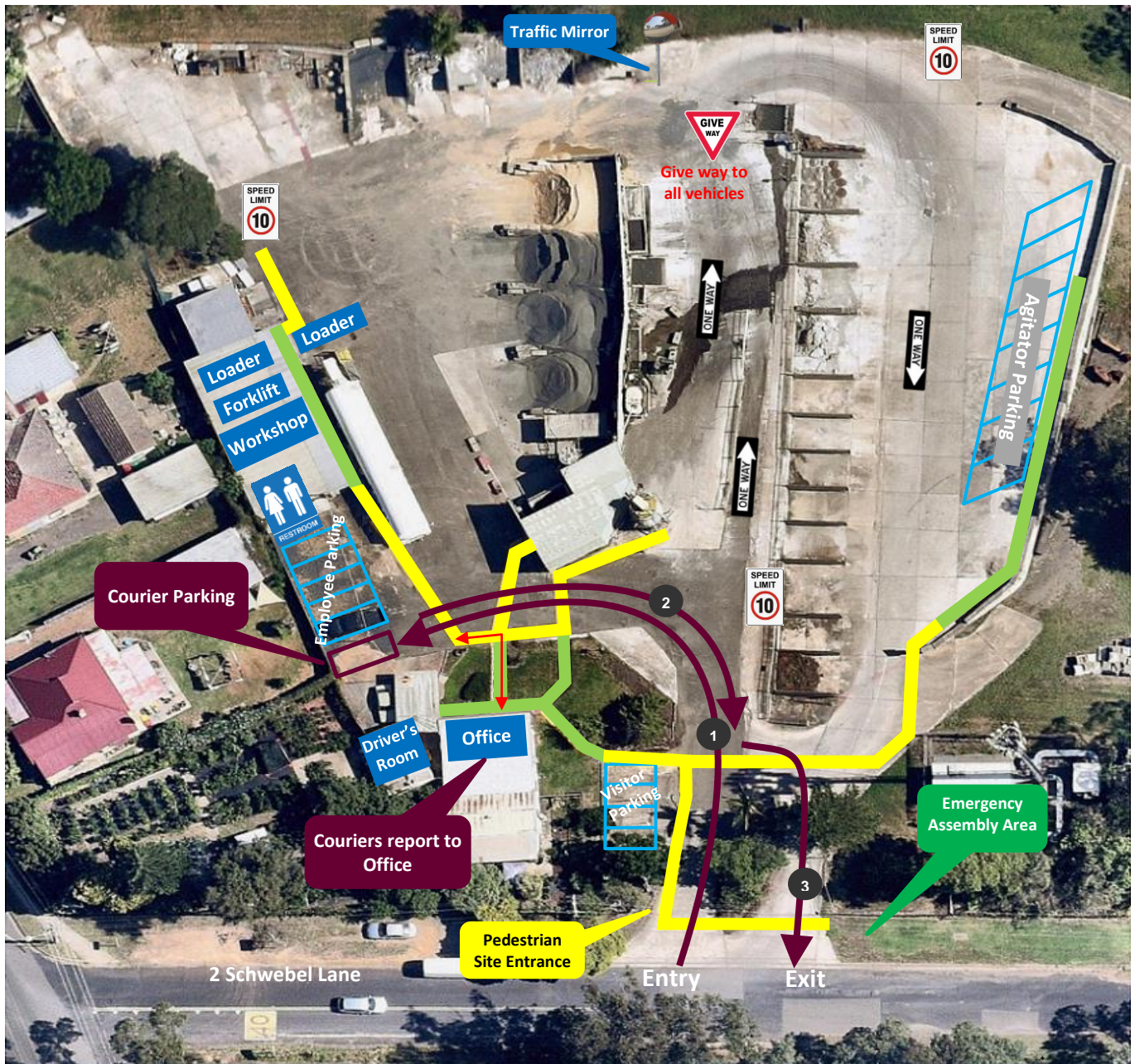
-  **Vehicle Route**  
Follow the direction of the vehicle route. Drivers **MUST** not exit their vehicle unless they can access a designated walkway or to complete designated work.
-  **Site Speed Limit**  
The site speed limit is restricted to 10kph.
-  **Visitor Parking**  
Visitors must park in the Visitor parking area and report to the office immediately upon arrival. Follow the pathway directional arrows to and from the office as indicated on the map.
-  **Front End Loader (FEL) and Forklift**
  - Operate in all areas.
  - Have right of way in vehicle operating areas. Always establish positive communication (verbal and/or visual contact) with operator before approaching within 20 metres.






# Traffic & Pedestrian Management Plan

## Courier Delivery Site Map





(Light Vehicle)



### Pedestrians

-  **Protected Walkway**
-  **Designated Walkway**  
Pedestrians **MUST** give way to vehicles and plant
-  **Pedestrian Exclusion Zone**  
Only authorised pedestrians are permitted to conduct work in operational areas

### Vehicles and Plant

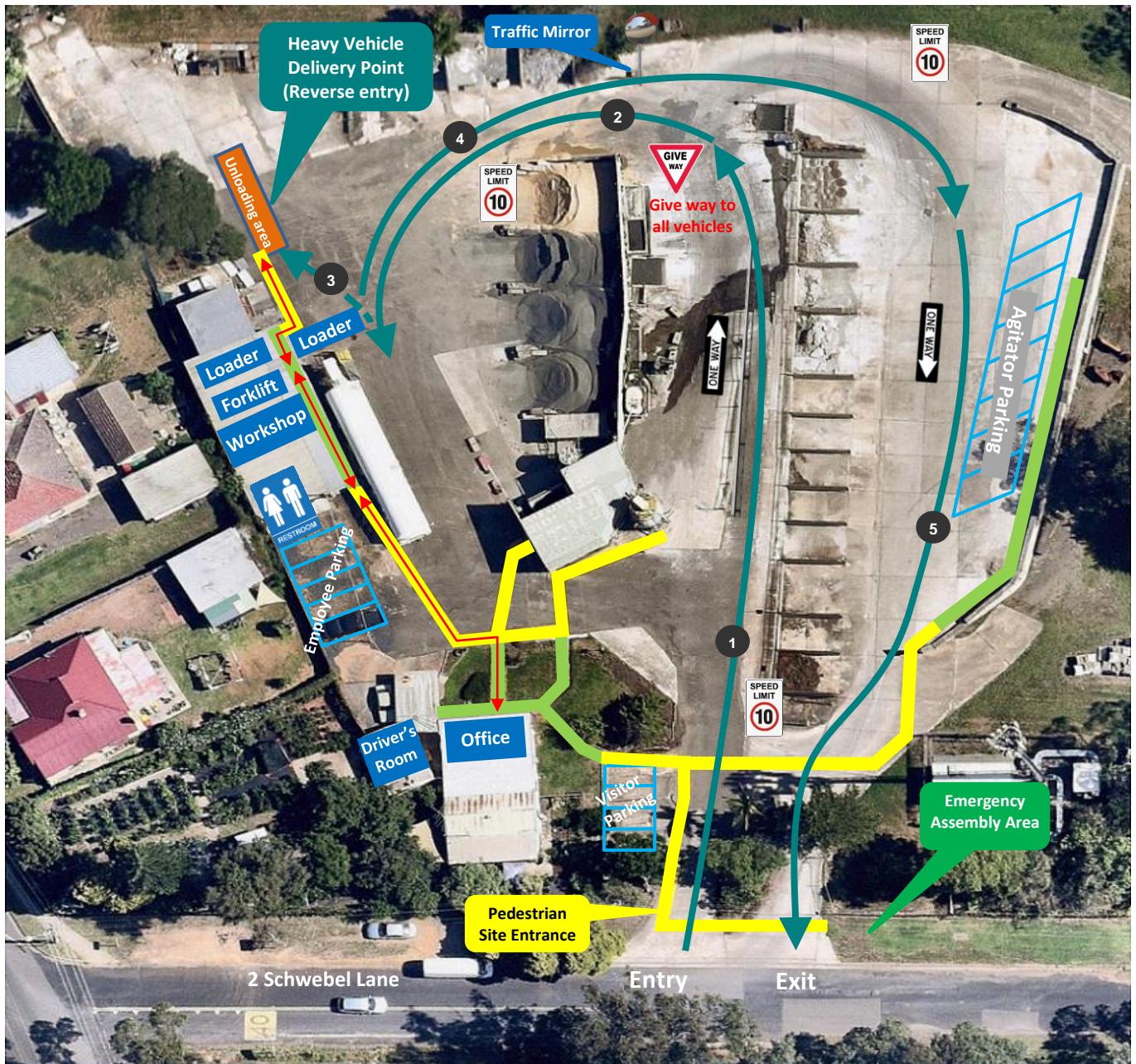
-  **Vehicle Route**  
Follow the direction of the vehicle route, steps 1 - 3.  
Drivers **MUST** not exit their vehicle unless they can access a designated walkway or to complete designated work.
-  **Site Speed Limit**  
The site speed limit is restricted to 10kph
-  **Courier Parking**  
Couriers report to the office immediately upon arrival. Follow the pathway directional arrows to and from the office, as indicated on the map.
-  **Front End Loader (FEL) and Forklift**
  - Operate in all areas.
  - Have right of way in vehicle operating areas. Always establish positive communication (verbal and/or visual contact) with operator before approaching within 20 metres.






# Traffic & Pedestrian Management Plan

## Heavy Vehicle Delivery Site Map

(Requiring Forklift)



### Pedestrians

-  **Protected Walkway**
-  **Designated Walkway**  
Pedestrians **MUST** give way to vehicles and plant
-  **Pedestrian Exclusion Zone**  
Only authorised pedestrians are permitted to conduct work in operational areas

### Vehicles and Plant



#### Vehicle Route

Follow the direction of the vehicle route, steps 1-5.

- At step 3, reverse into unloading position.
- Once unloading is complete, follow steps 4 & 5 to exit the site.

Drivers **MUST** not exit their vehicle unless they can access a designated walkway or to complete designated work.



#### Reverse Entry



#### Site Speed Limit

The site speed limit is restricted to 10kph



#### Heavy Vehicle Delivery Point

- Reverse entry
- When access to the office is required, follow the pathway directional arrows to and from the office, as indicated on the map.



#### Front End Loader (FEL) and Forklift

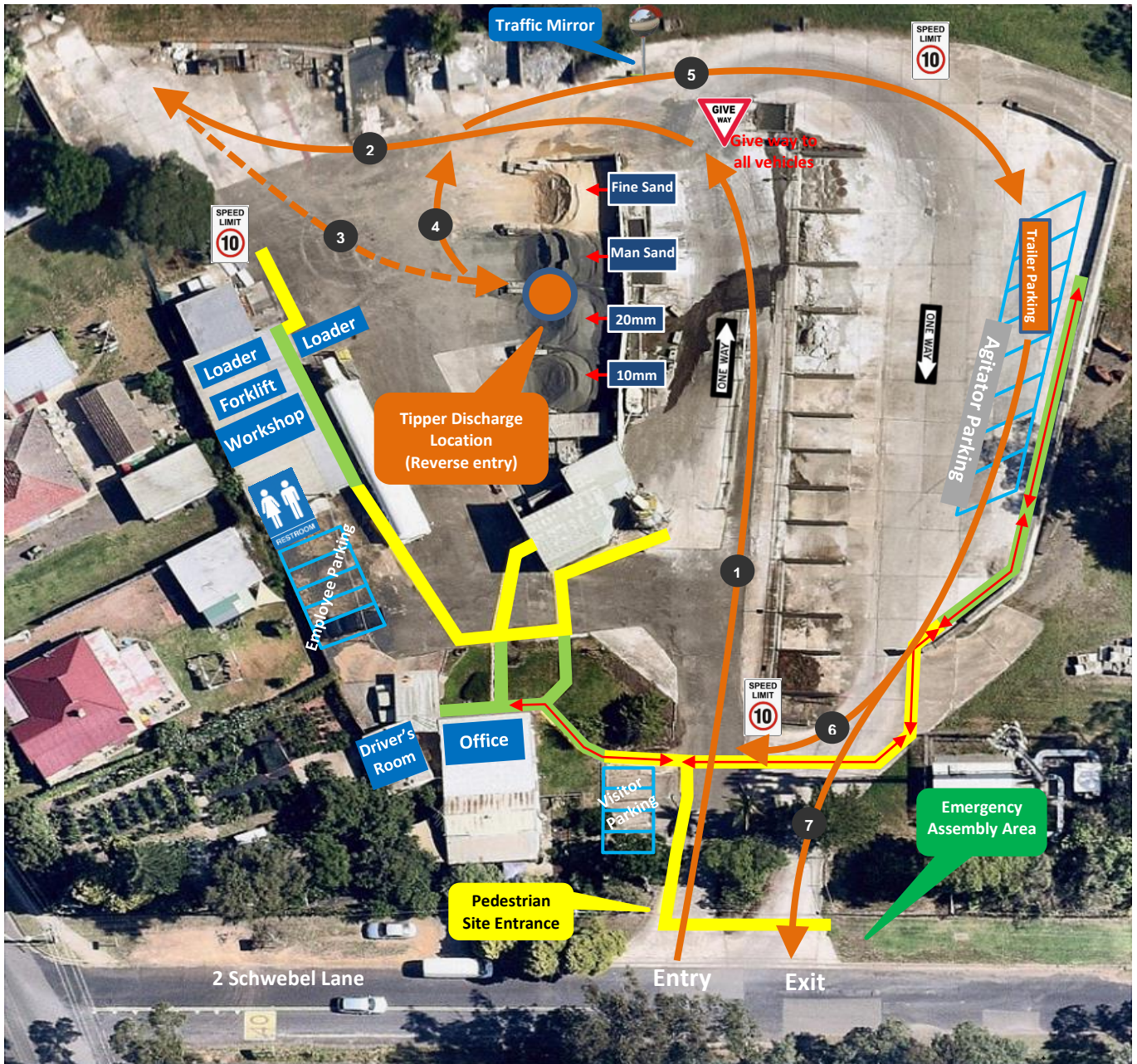
- Operate in all areas.
- Have right of way in vehicle operating areas. Always establish positive communication (verbal and/or visual contact) with operator before approaching within 20 metres.



# Traffic & Pedestrian Management Plan

## Tipper Site Map

(Driver must contact office on UHF channel 4 prior to entering site)



### Pedestrians

**Protected Walkway**

**Designated Walkway**  
Pedestrians **MUST** give way to vehicles and plant

**Pedestrian Exclusion Zone**  
Only authorised pedestrians are permitted to conduct work in operational areas

### Vehicles and Plant

#### Vehicle Route

**To unload Trailer** - follow the direction of the vehicle route, steps 1 - 3.

- Once the discharge is complete, follow steps 4 & 5 to park and unhook the Trailer (in Agitator parking area).

**To unload Truck** - follow step 6, then repeat steps 1 - 3.

- Once the discharge is complete, follow steps 4 & 5 to park and hook-up the Trailer.

- Follow step 7 to exit the site.

Drivers **MUST** not exit their vehicle unless they can access a designated walkway or to complete designated work

#### Reverse Entry

#### Site Speed Limit

The site speed limit is restricted to 10kph

#### Tipper Discharge Location – Reverse entry

When access to the office is required, follow the pathway directional arrows to and from the office, as indicated on the map.

**Trailer Parking** – located in the Agitator parking area

#### Front End Loader (FEL) and Forklift

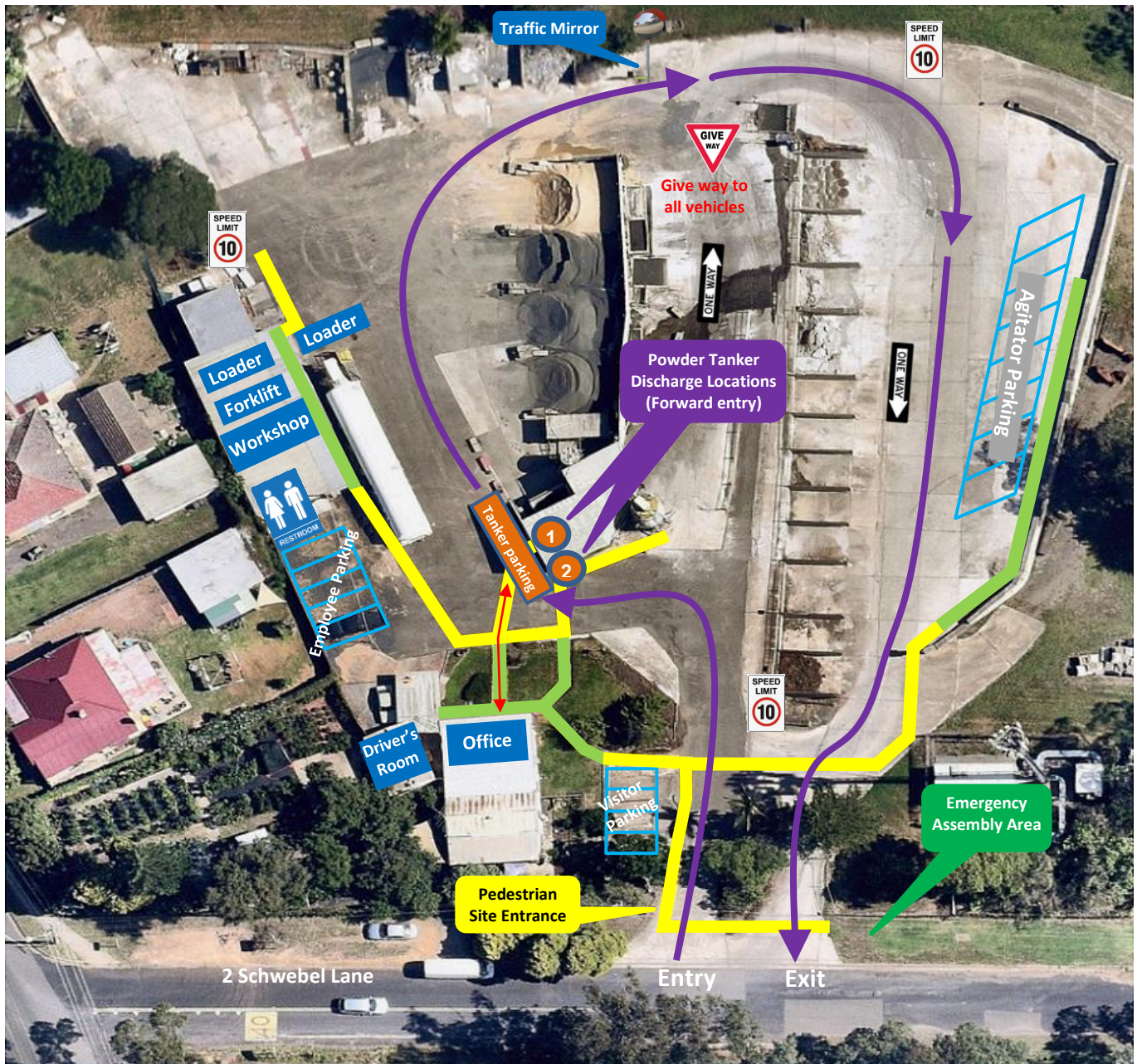
- Operate in all areas.
- Have right of way in vehicle operating areas. Always establish positive communication (verbal and/or visual contact) with operator before approaching within 20 metres.






# Traffic & Pedestrian Management Plan

## Powder Tanker Site Map

(Driver must contact office on UHF channel 4 prior to entering site)



### Pedestrians

-  **Protected Walkway**
-  **Designated Walkway**  
Pedestrians **MUST** give way to vehicles and plant
-  **Pedestrian Exclusion Zone**  
Only authorised pedestrians are permitted to conduct work in operational areas

### Vehicles and Plant



#### Vehicle Route

Follow the direction of the vehicle route. Drivers **MUST** not exit their vehicle unless they can access a designated walkway or to complete designated work.



#### Site Speed Limit

The site speed limit is restricted to 10kph



#### Powder Tanker Discharge Location Locations 1 & 2 – Pozzomont



#### Tanker Discharge Parking area

When access to the office is required, follow the pathway directional arrows to and from the office, as indicated on the map.



#### Front End Loader (FEL) and Forklift

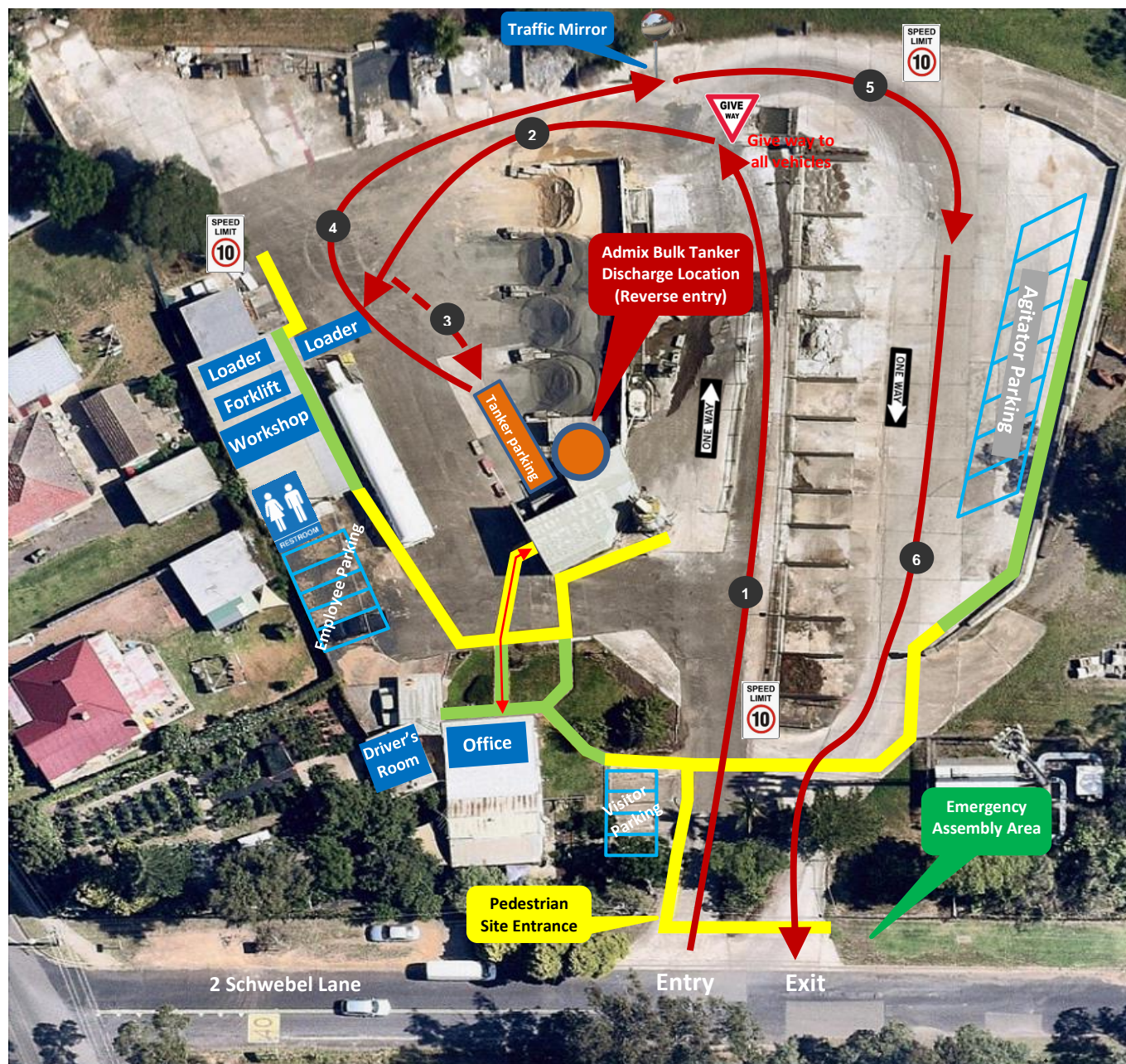
- Operate in all areas.
- Have right of way in vehicle operating areas. Always establish positive communication (verbal and/or visual contact) with operator before approaching within 20 metres.






# Traffic & Pedestrian Management Plan

## Admix Bulk Tanker Site Map







(Driver must contact office on UHF channel 4 prior to entering site)



### Pedestrians

-  **Protected Walkway**
-  **Designated Walkway**  
Pedestrians **MUST** give way to vehicles and plant
-  **Pedestrian Exclusion Zone**  
Only authorised pedestrians are permitted to conduct work in operational areas

### Vehicles and Plant

-  **Vehicle Route**  
Follow the direction of the vehicle route, steps 1 – 6.  
 - At step 3, reverse into discharge position.  
 - Once discharging is complete, follow steps 4 – 6 to exit the site.  
 Drivers **MUST** not exit their vehicle unless they can access a designated walkway or to complete designated work.
-  **Reverse Entry**
-  **Site Speed Limit**  
The site speed limit is restricted to 10kph
-  **Admix Bulk Tanker Discharge Location - Reverse entry**
-  **Tanker Discharge Parking area**  
When access to the office is required, follow the pathway directional arrows to and from the office, as indicated on the map.
-  **Front End Loader (FEL) and Forklift**
  - Operate in all areas.
  - Have right of way in vehicle operating areas. Always establish positive communication (verbal and/or visual contact) with operator before approaching within 20 metres.

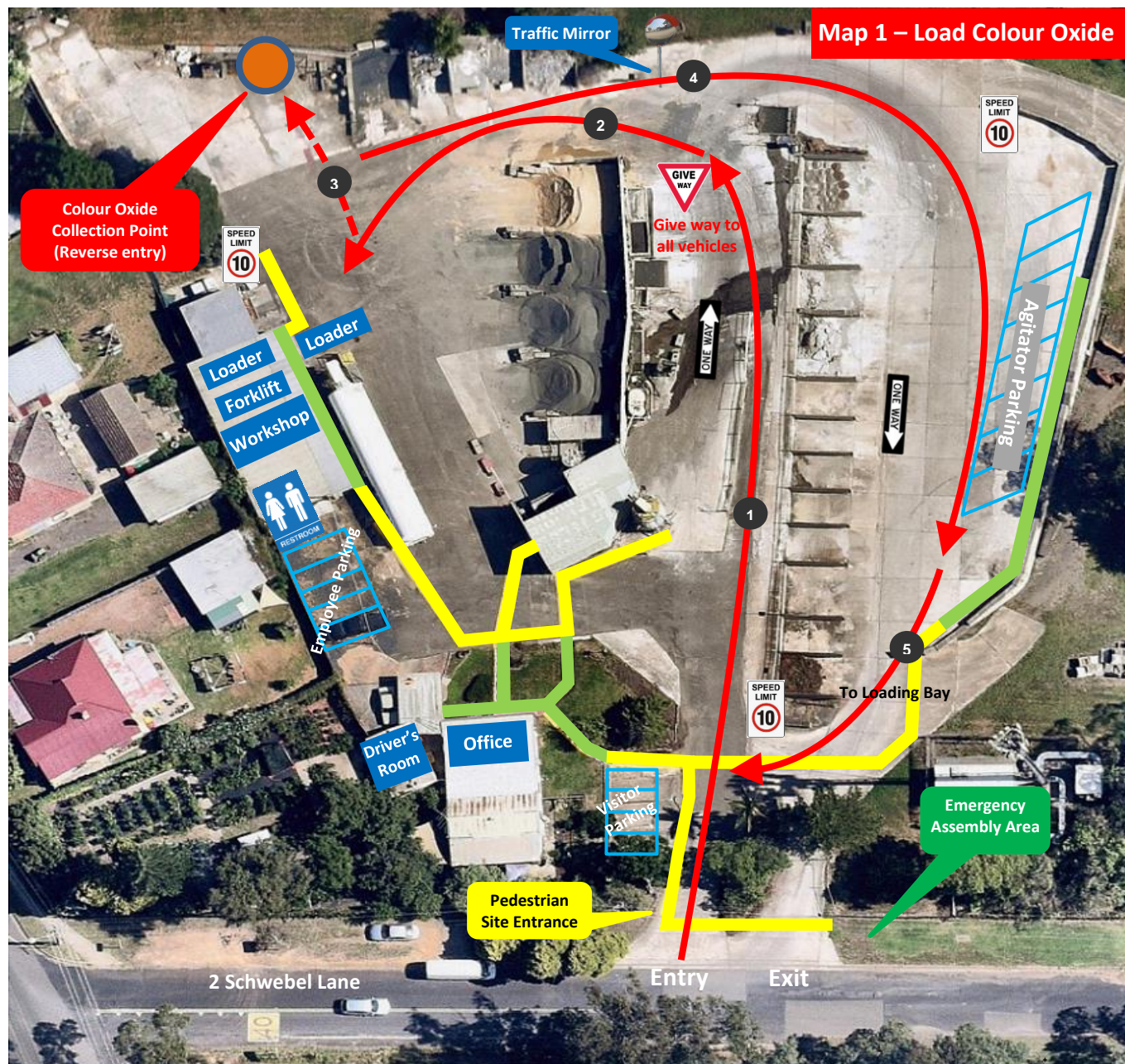


# Traffic & Pedestrian Management Plan


## Agitator Site Map

### Map 1 – Load Colour Oxide

(Driver must communicate on UHF channel 4)



#### Pedestrians

-  **Protected Walkway**
-  **Designated Walkway**  
Pedestrians **MUST** give way to vehicles and plant
-  **Pedestrian Exclusion Zone**  
Only authorised pedestrians are permitted to conduct work in operational areas

#### Vehicles and Plant



##### Vehicle Route

Follow the direction of the vehicle route, steps 1 - 5.

- At step 3, reverse to the Oxide collection point.
- Once Oxide has been collected, follow steps 4 & 5 and then refer to map 2 for directions to Loading Bay.

Drivers **MUST** not exit their vehicle unless they can access a designated walkway or to complete designated work.



##### Reverse Entry



##### Site Speed Limit

The site speed limit is restricted to 10kph



##### Colour Oxide Collection Point

Reverse entry



##### Front End Loader (FEL) and Forklift

- Operate in all areas.
- Have right of way in vehicle operating areas. Always establish positive communication (verbal and/or visual contact) with operator before approaching within 20 metres.



# Traffic & Pedestrian Management Plan

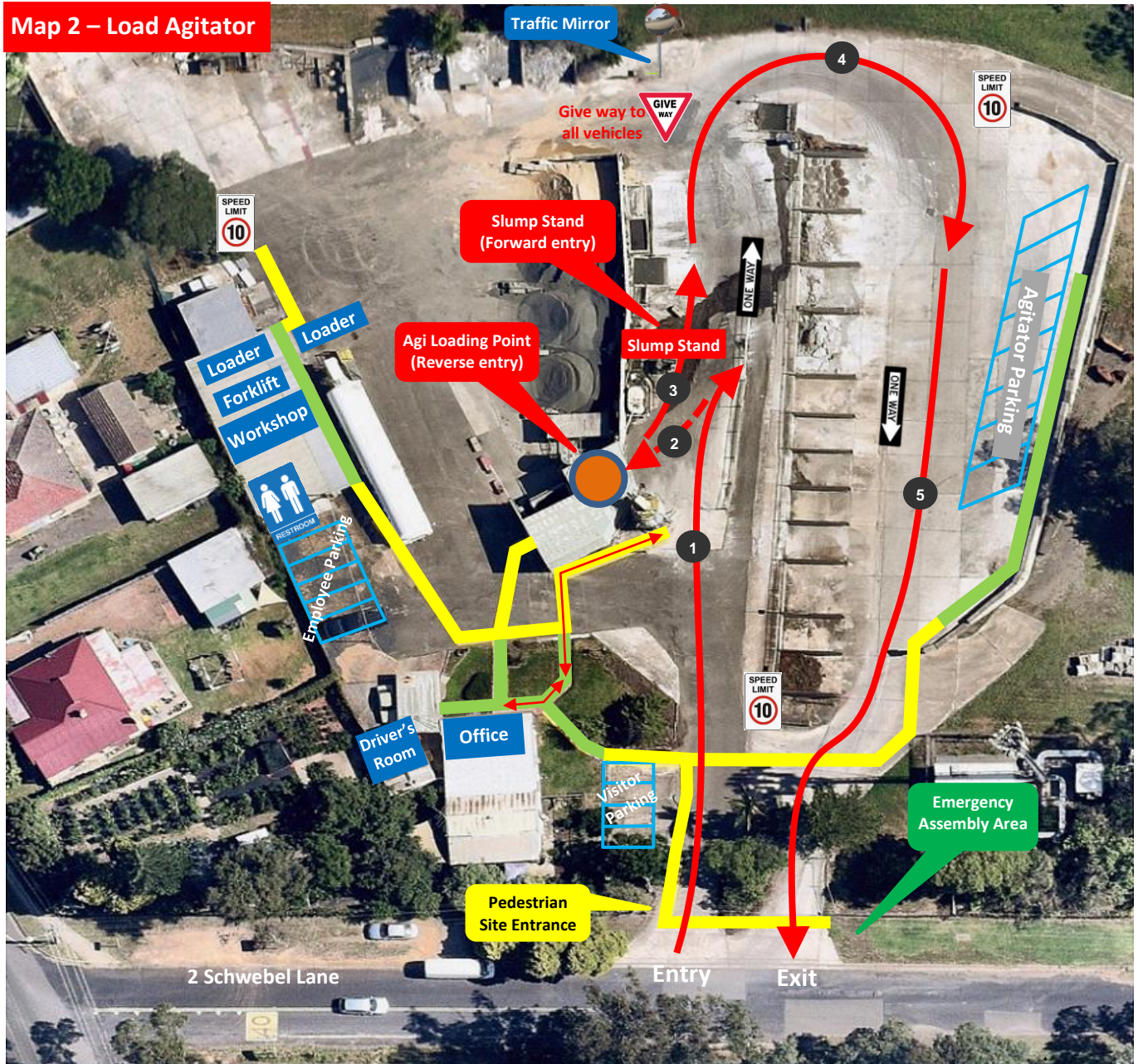
## Agitator Site Map

### Map 2 – Load Agitator




(Driver must communicate on UHF channel 4)



Map 2 – Load Agitator



#### Pedestrians

-  **Protected Walkway**
-  **Designated Walkway**  
Pedestrians **MUST** give way to vehicles and plant
-  **Pedestrian Exclusion Zone**  
Only authorised pedestrians are permitted to conduct work in operational areas

#### Vehicles and Plant



##### Vehicle Route

Follow the direction of the vehicle route, steps 1 - 5.

- At step 2, reverse in to the Agitator Loading Point.
- At step 3, forward entry to Slump Stand.
- Follow steps 4 & 5 to exit the site

Drivers **MUST** not exit their vehicle unless they can access a designated walkway or to complete designated work.



##### Reverse Entry

##### Site Speed Limit

The site speed limit is restricted to 10kph



##### Agitator Loading Point – Reverse entry

When access to the office is required, follow the pathway directional arrows to and from the office, as indicated on the map.



##### Slump Stand - Forward entry



##### Front End Loader (FEL) and Forklift

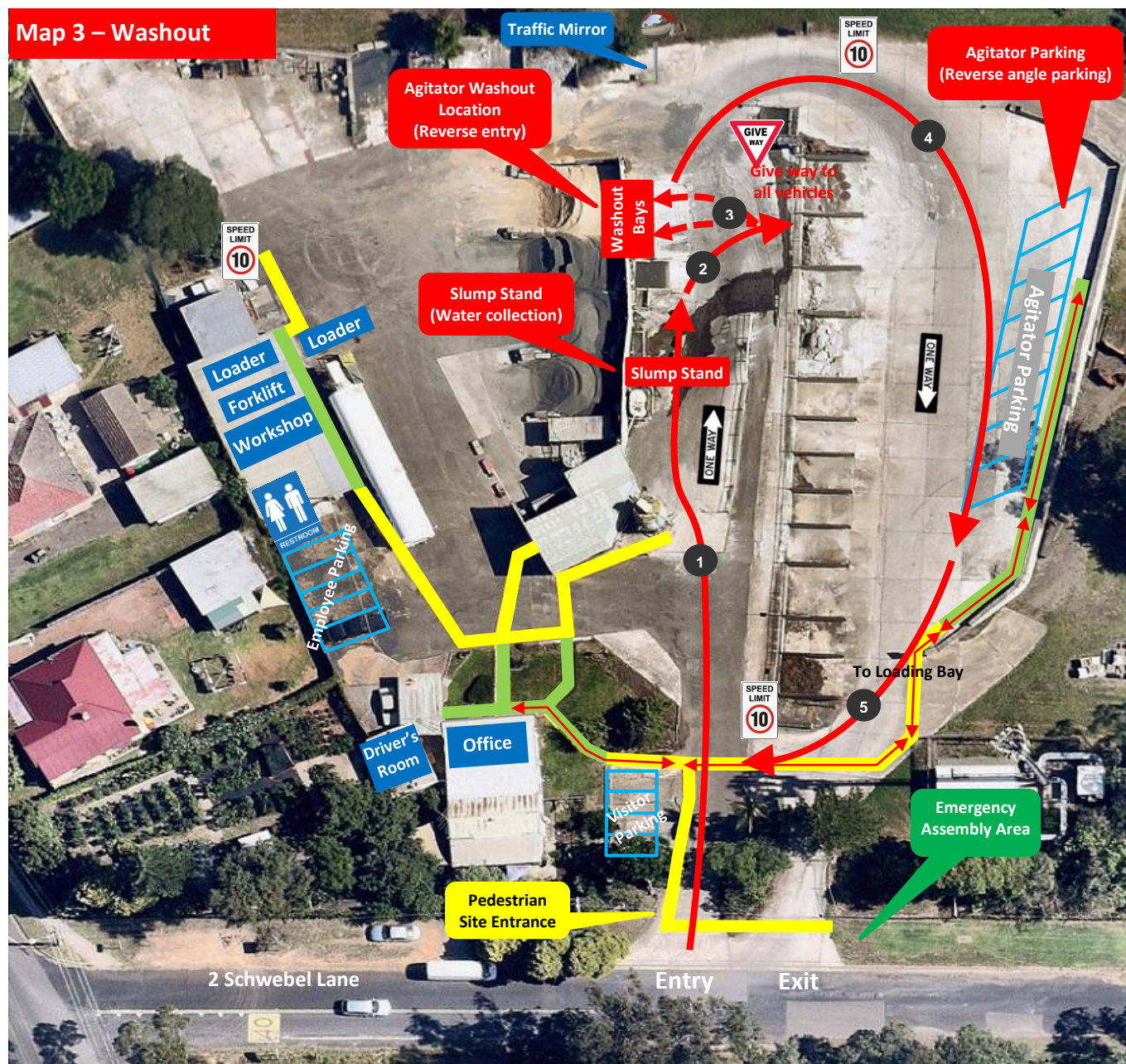
- Operate in all areas.
- Have right of way in vehicle operating areas. Always establish positive communication (verbal and/or visual contact) with operator before approaching within 20 metres.



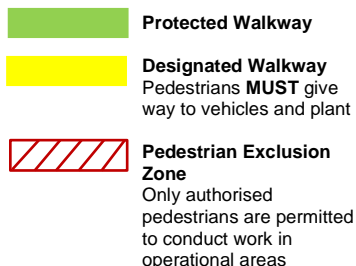
**(Driver must communicate on UHF channel 4)**



### Map 3 – Washout



## Vehicles and Plant



### Vehicle Route

Follow the direction of the vehicle route, steps 1 - 5.

- At step 1, collect water from Slump Stand.
- At step 3, reverse into the Washout Bay.
- Once washout is complete, follow step 4 to Agitator parking bays or step 5 to continue to the Loading Bay.

Drivers **MUST** not exit their vehicle unless they can access a designated walkway or to complete designated work.



### Reverse Entry



### Site Speed Limit

**Site Speed Limit**  
The site speed limit is restricted to 10kph



### Slump Stand – Forward entry

**Slump Stand** = Forward entry  
Water is available from the Slump Stand



### Washout Bays - Reverse entry



### Front End Loader (FEL) and Forklift

- Operate in all areas.
- Have right of way in vehicle operating areas. Always establish positive communication (verbal and/or visual contact) with operator before approaching within 20 metres.






# Traffic & Pedestrian Management Plan

## Loading Washout & Hard Waste Site Map





(Driver must contact office on UHF channel 4 prior to entering site)



### Pedestrians

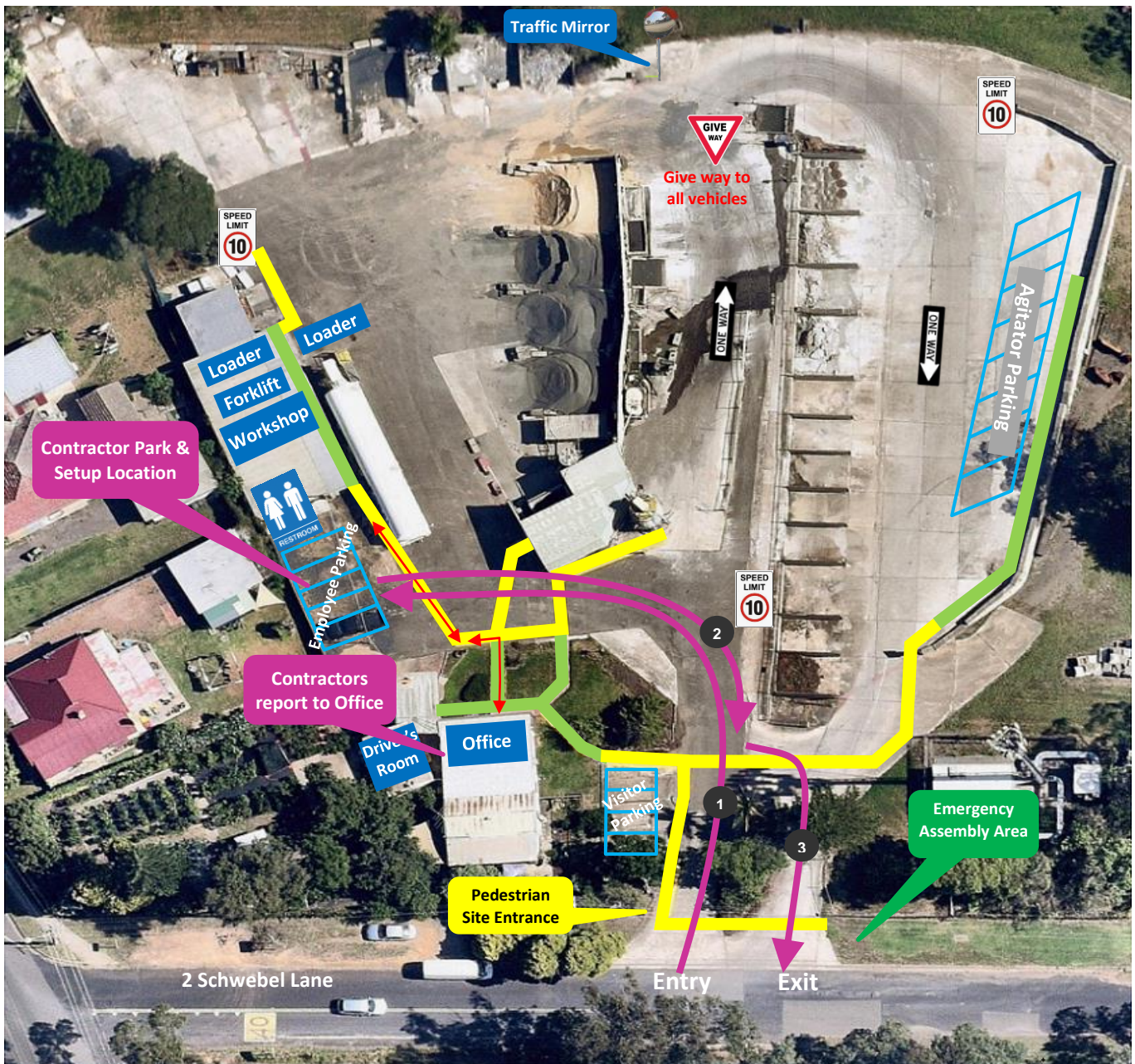
-  **Protected Walkway**
-  **Designated Walkway**  
Pedestrians **MUST** give way to vehicles and plant
-  **Pedestrian Exclusion Zone**  
Only authorised pedestrians are permitted to conduct work in operational areas

### Vehicles and Plant




-  **Vehicle Route**  
Follow the direction of the vehicle route. Drivers **MUST** not exit their vehicle unless they can access a designated walkway or to complete designated work.
-  **Site Speed Limit**  
The site speed limit is restricted to 10kph
-  **Washout & Hard Waste Loading Location**  
Forward entry
-  **Front End Loader (FEL) and Forklift**
  - Operate in all areas.
  - Have right of way in vehicle operating areas. Always establish positive communication (verbal and/or visual contact) with operator before approaching within 20 metres.



# Traffic & Pedestrian Management Plan Contractor Site Map



## Pedestrians

-  **Protected Walkway**
-  **Designated Walkway**  
Pedestrians **MUST** give way to vehicles and plant
-  **Pedestrian Exclusion Zone**  
Only authorised pedestrians are permitted to conduct work in operational areas

## Vehicles and Plant



### Vehicle Route

Follow the direction of the vehicle route, steps 1 – 3.  
Drivers **MUST** not exit their vehicle unless they can access a designated walkway or to complete designated work.



### Site Speed Limit

The site speed limit is restricted to 10kph



### Contractor Parking & Setup Location

- Contractors park in the Employee parking area.
- Upon arrival, Contractors must report to office for induction and further instructions. Follow the pathway directional arrows to and from the office as indicated on the map.



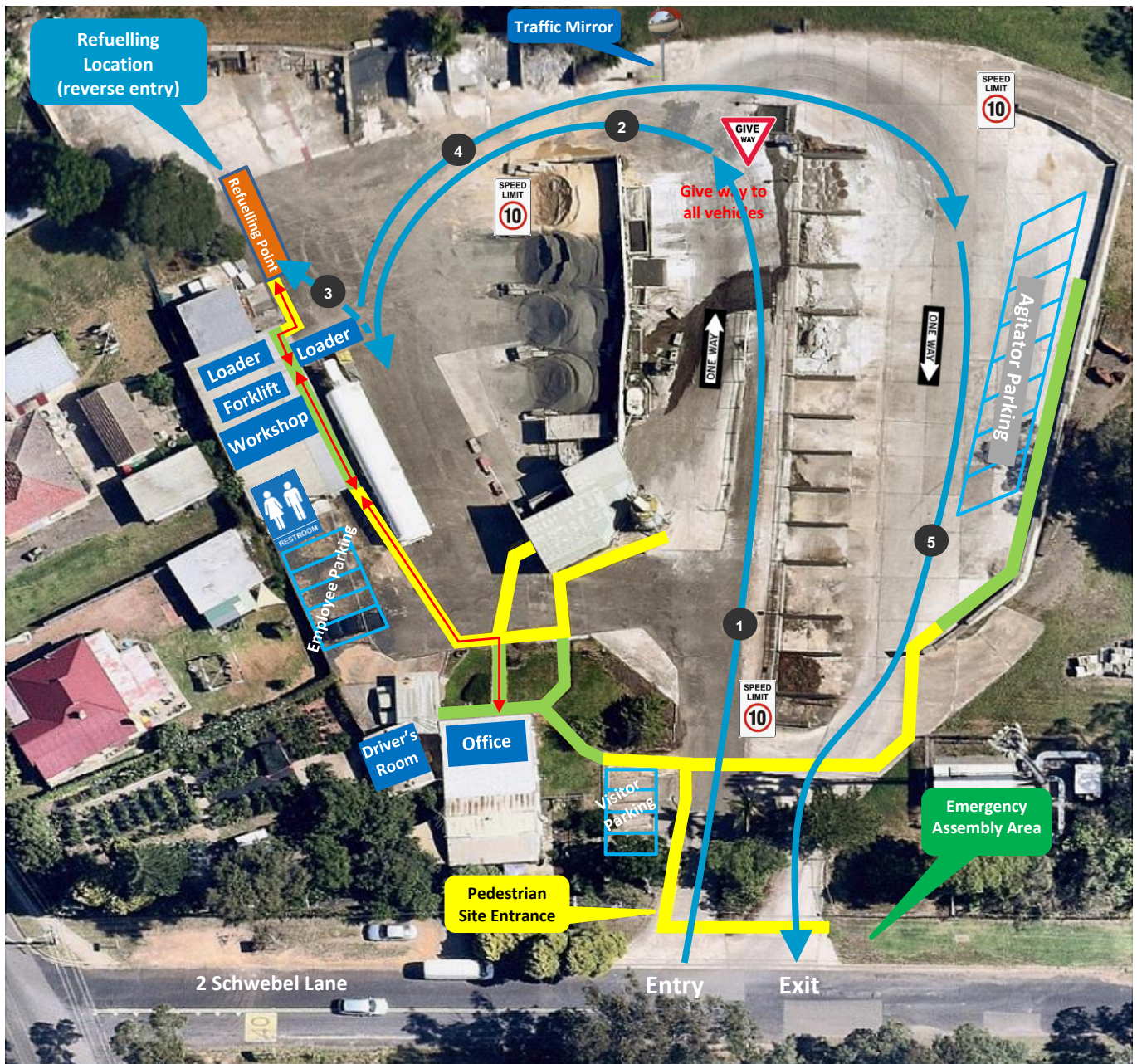
### Front End Loader (FEL) and Forklift

- Operate in all areas.
- Have right of way in vehicle operating areas. Always establish positive communication (verbal and/or visual contact) with operator before approaching within 20 metres.



# Traffic & Pedestrian Management Plan

## Fuel Delivery Site Map



### Pedestrians

-  **Protected Walkway**
-  **Designated Walkway**  
Pedestrians **MUST** give way to vehicles and plant
-  **Pedestrian Exclusion Zone**  
Only authorised pedestrians are permitted to conduct work in operational areas

### Vehicles and Plant



#### Vehicle Route

Follow the direction of the vehicle route, steps 1-5.

- At step 3, reverse into refuelling position.
- Once refuelling is complete, follow steps 4 & 5 to exit the site.

Drivers **MUST** not exit their vehicle unless they can access a designated walkway or to complete designated work.



#### Reverse Entry



#### Site Speed Limit

The site speed limit is restricted to 10kph



#### Refuelling Location

When access to the office is required, follow the pathway directional arrows to and from the office, as indicated on the map.



#### Front End Loader (FEL) and Forklift

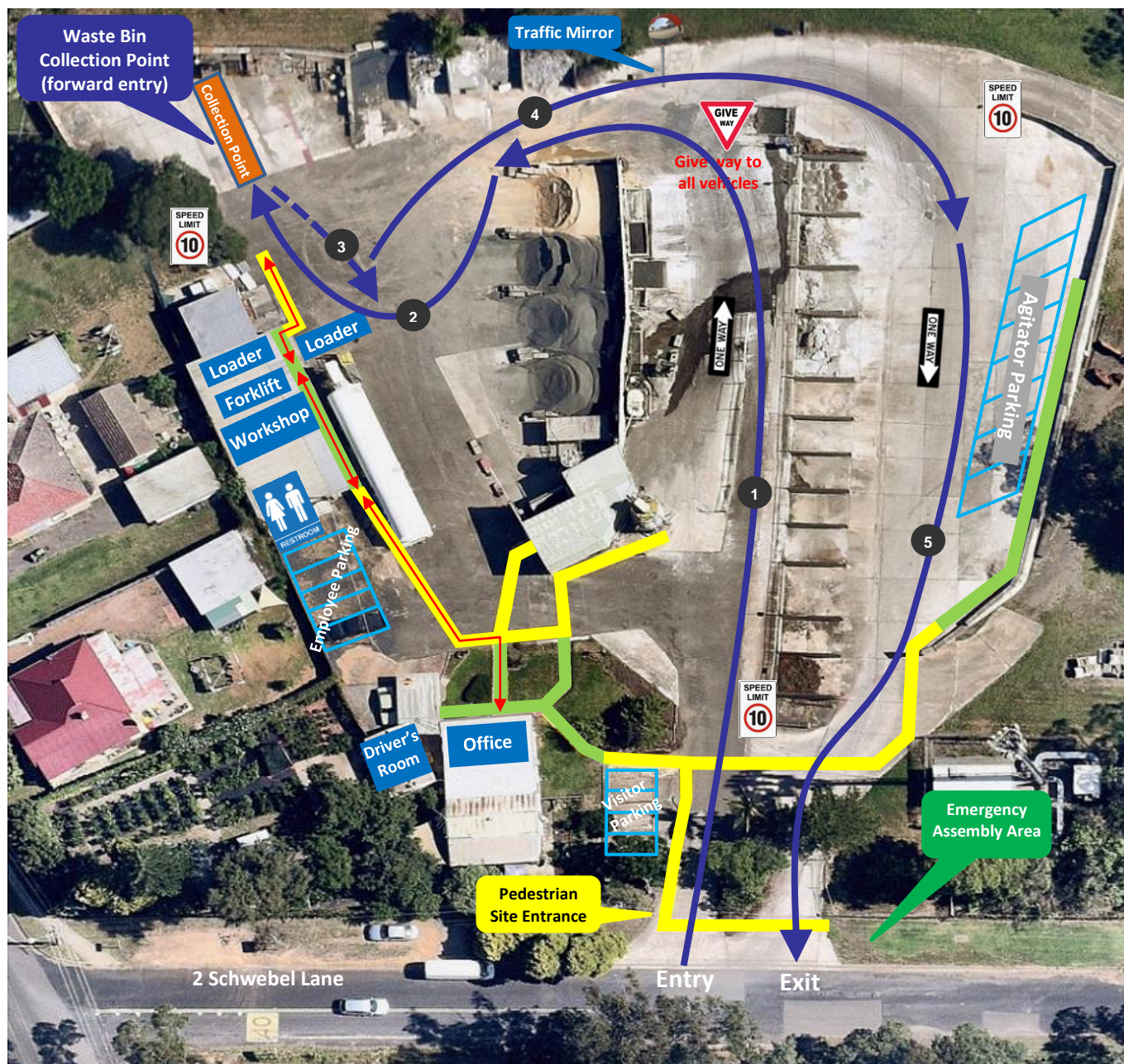
- Operate in all areas.
- Have right of way in vehicle operating areas. Always establish positive communication (verbal and/or visual contact) with operator before approaching within 20 metres.




# Traffic & Pedestrian Management Plan

## Waste Bin Collection Site Map

### (Front Lift)



#### Pedestrians

-  **Protected Walkway**
-  **Designated Walkway**  
Pedestrians **MUST** give way to vehicles and plant
-  **Pedestrian Exclusion Zone**  
Only authorised pedestrians are permitted to conduct work in operational areas

#### Vehicles and Plant



##### Vehicle Route

Follow the direction of the vehicle route, steps 1 - 5.

- At step 2, forward entry to the collection point.
- Once waste collection is complete, follow step 3 - 5 to exit the site.

Drivers **MUST** not exit their vehicle unless they can access a designated walkway or to complete designated work.



##### Reverse Exit



##### Site Speed Limit

The site speed limit is restricted to 10kph



##### Waste Bin Collection Point

When access to the office is required, follow the pathway directional arrows to and from the office, as indicated on the map.



##### Front End Loader (FEL) and Forklift

- Operate in all areas.
- Have right of way in vehicle operating areas. Always establish positive communication (verbal and/or visual contact) with operator before approaching within 20 metres.