

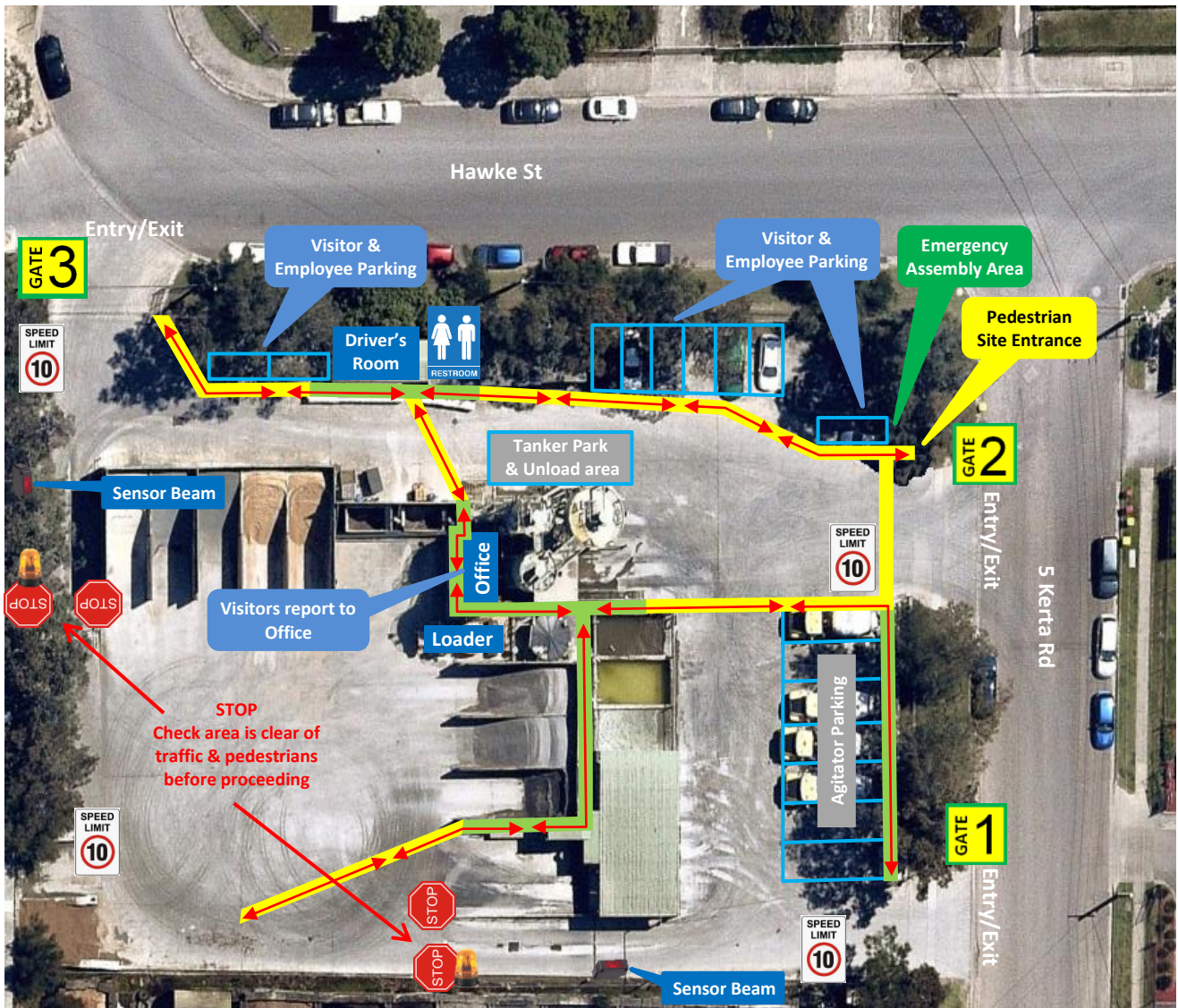


Kincumber Concrete Plant

Traffic & Pedestrian Management Plan

Site Map – Pedestrian Upgrade

Boral Concrete – 5 Kerta Rd, Kincumber



Pedestrians

Protected Walkway

Designated Walkway
Pedestrians **MUST** give way to vehicles and plant

Pedestrian Exclusion Zone
Only authorised pedestrians are permitted to conduct work in operational areas

Vehicles and Plant



Emergency Assembly Area

Located inside entry gate 2. Proceed to the assembly point using the designated walkways.



Light Vehicle Parking

- Light vehicles park in the Visitor & Employee parking bays. Enter via gate 2, exit via gate 3.
- Parking is strictly reverse entry.
- Visitors must report to the Office immediately upon arrival (office is located upstairs). Follow the pathway directional arrows to and from Office, as indicated on the map.



Site Speed Limit

The site speed limit is restricted to 10kph.



Warning Lights

Sensor beams are installed on the approaches to the Stockpile area. Flashing lights will activate as soon as a vehicle passes through the light beam.

Warning: When light is flashing, vehicles **MUST** stop at the Stop sign and only proceed if there are no other vehicles in the area.



2-Way Communication

All radio communication on this site is via UHF Channel 8.



Front End Loader (FEL)

- Operates in all areas.
- Has right of way in vehicle operating areas. Always establish positive communication (verbal and/or visual contact) with operator before approaching within 20 metres. Communicate with the Loader operator via UHF Channel 8.